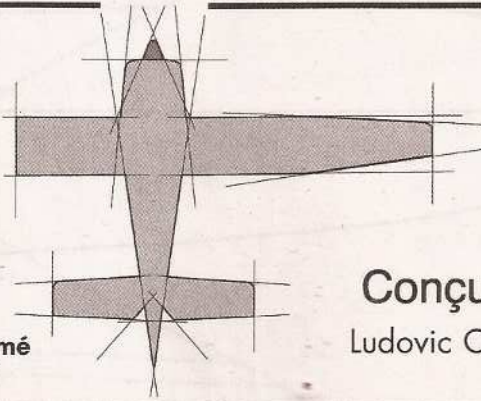


PLAN *encarté*

modèle
magazine

Espace Clichy - Service VPC - 6, rue Olof Palmé
92587 Clichy cedex - Tél : 01 47 56 54 00



Conçu par
Ludovic CLAVIER

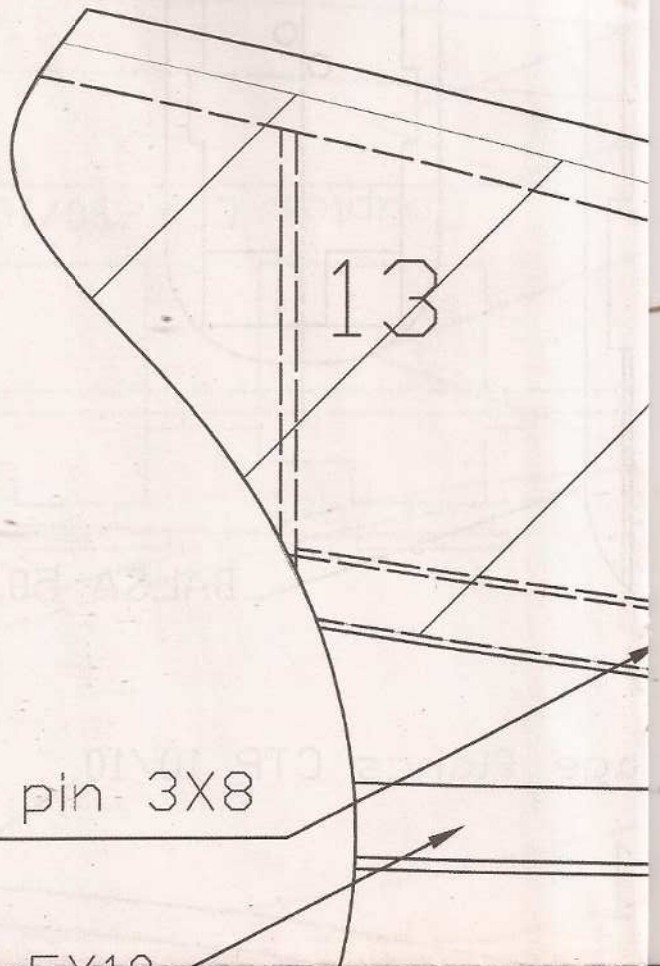
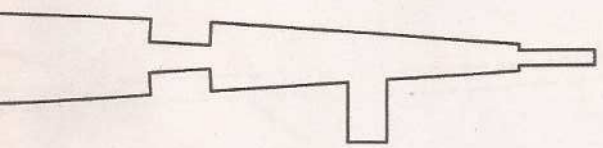
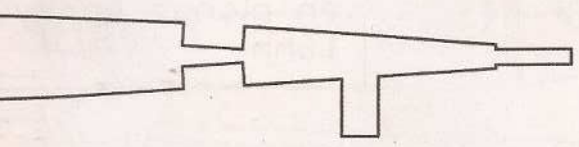
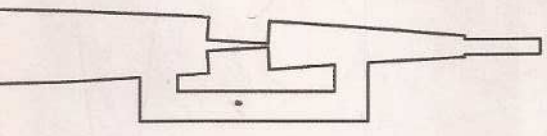
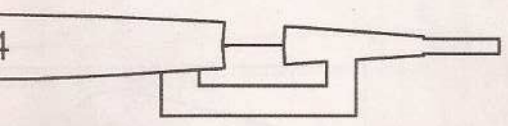
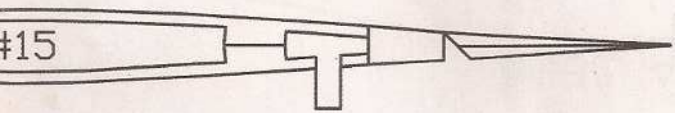
AKHENATON

RÉF. 728E

14

15

Saumon
constitué de 2
couches de
balsa 50/10



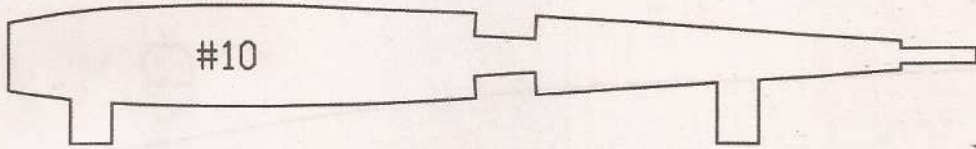
Longeron pin 3X8

n balsa

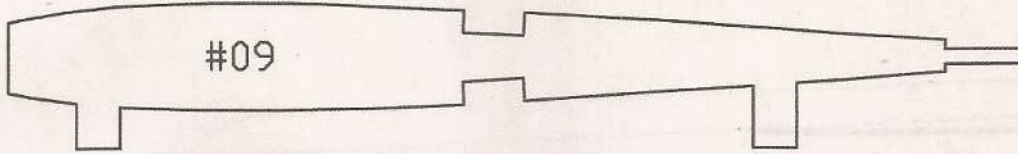
EX10

200

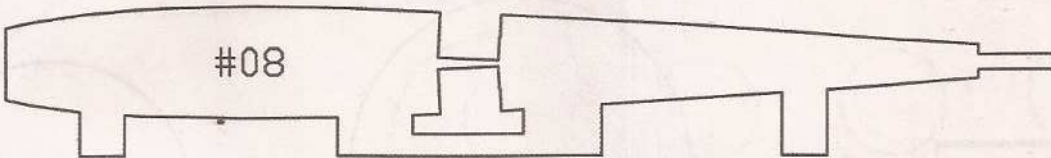
300



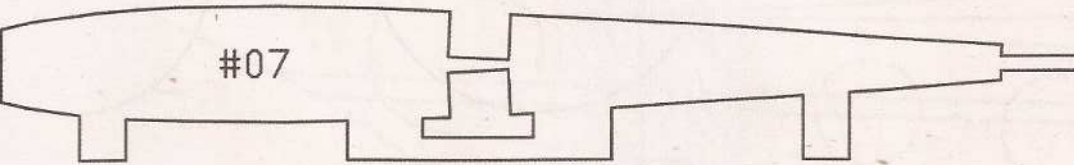
#10



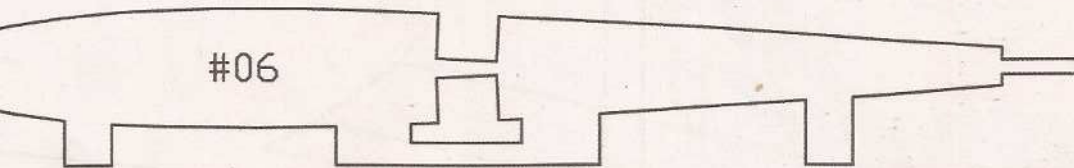
#09



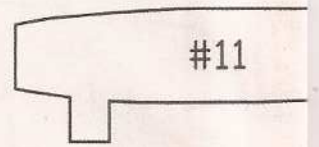
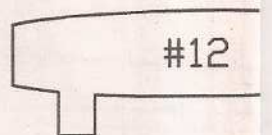
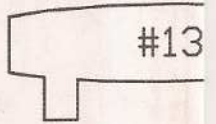
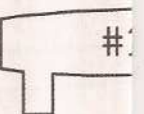
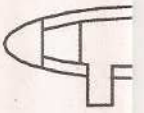
#08



#07



#06



#1

#13

#12

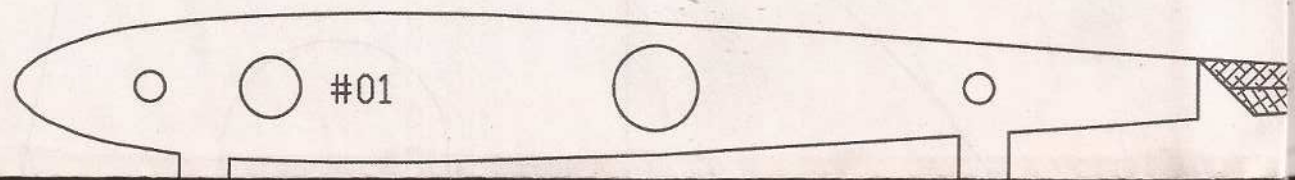
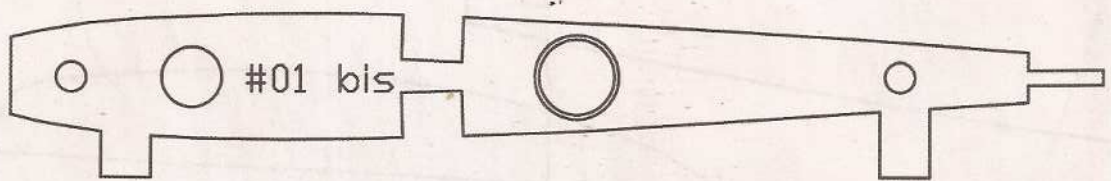
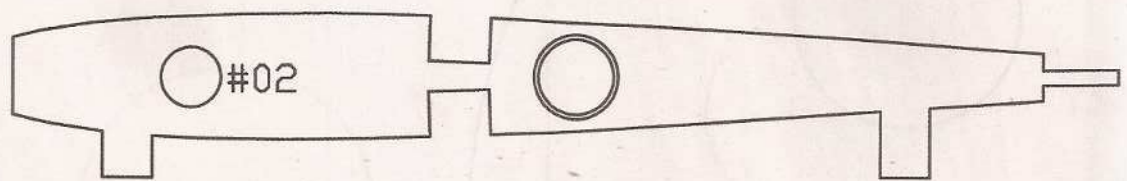
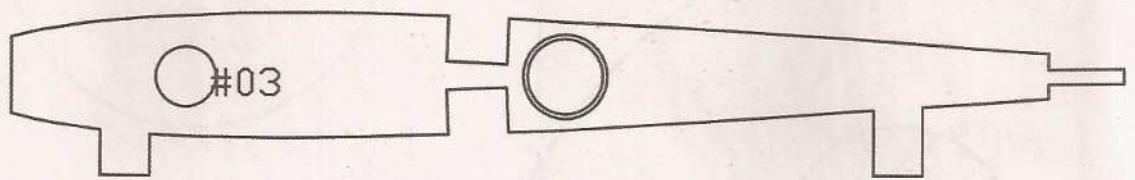
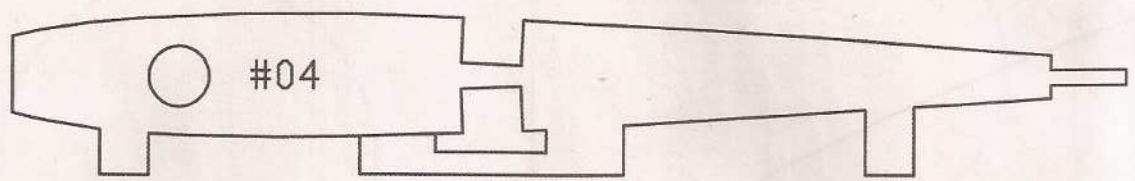
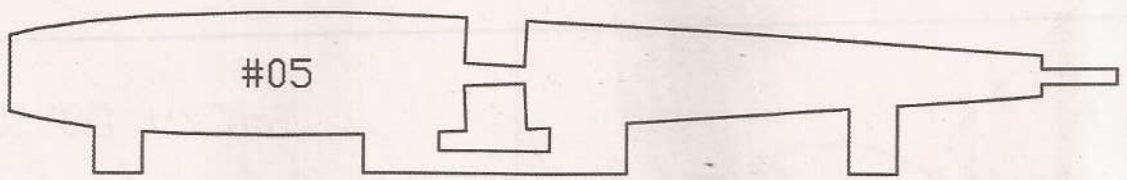
#11



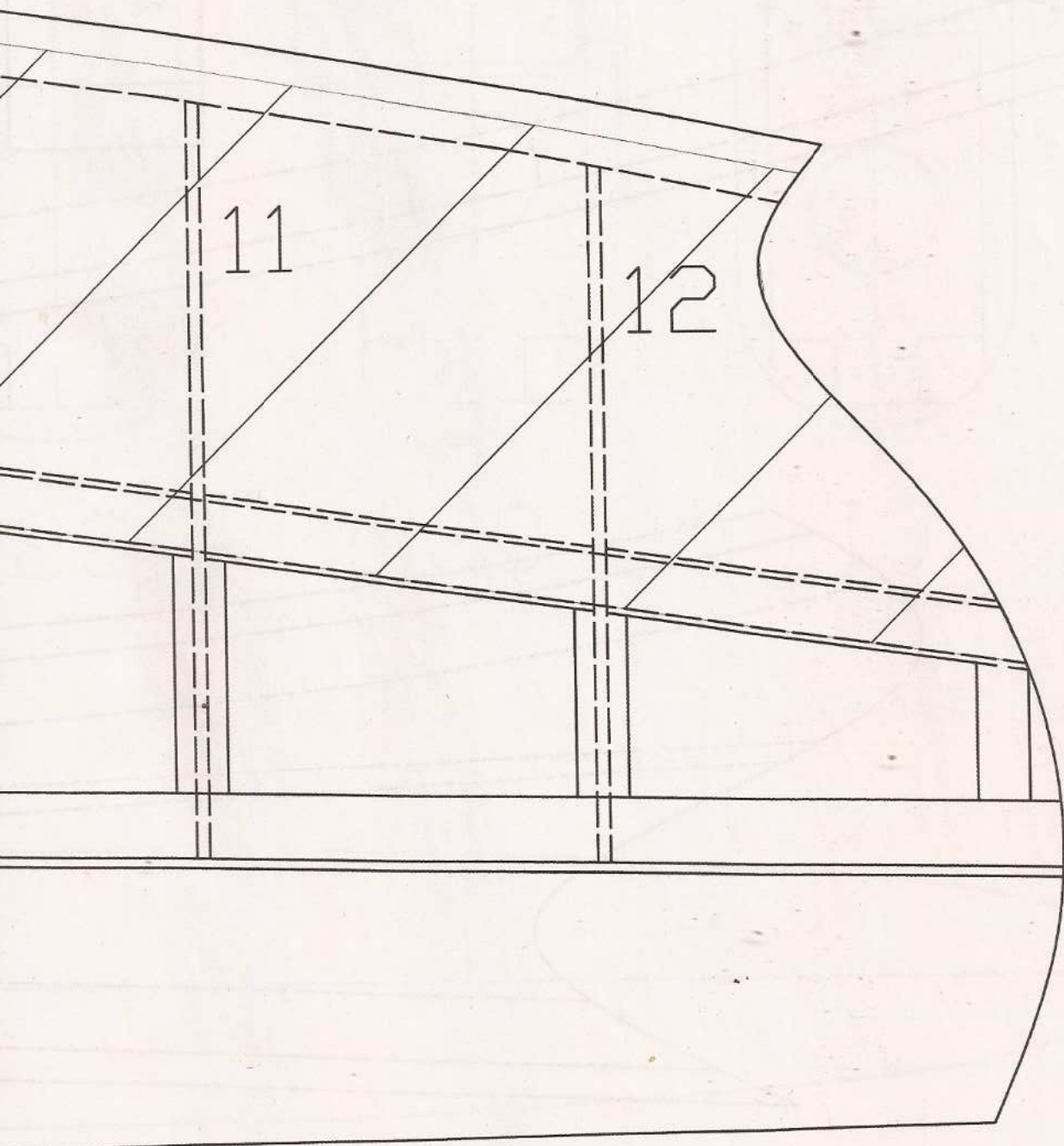
Toutes les nervures sont

0

100

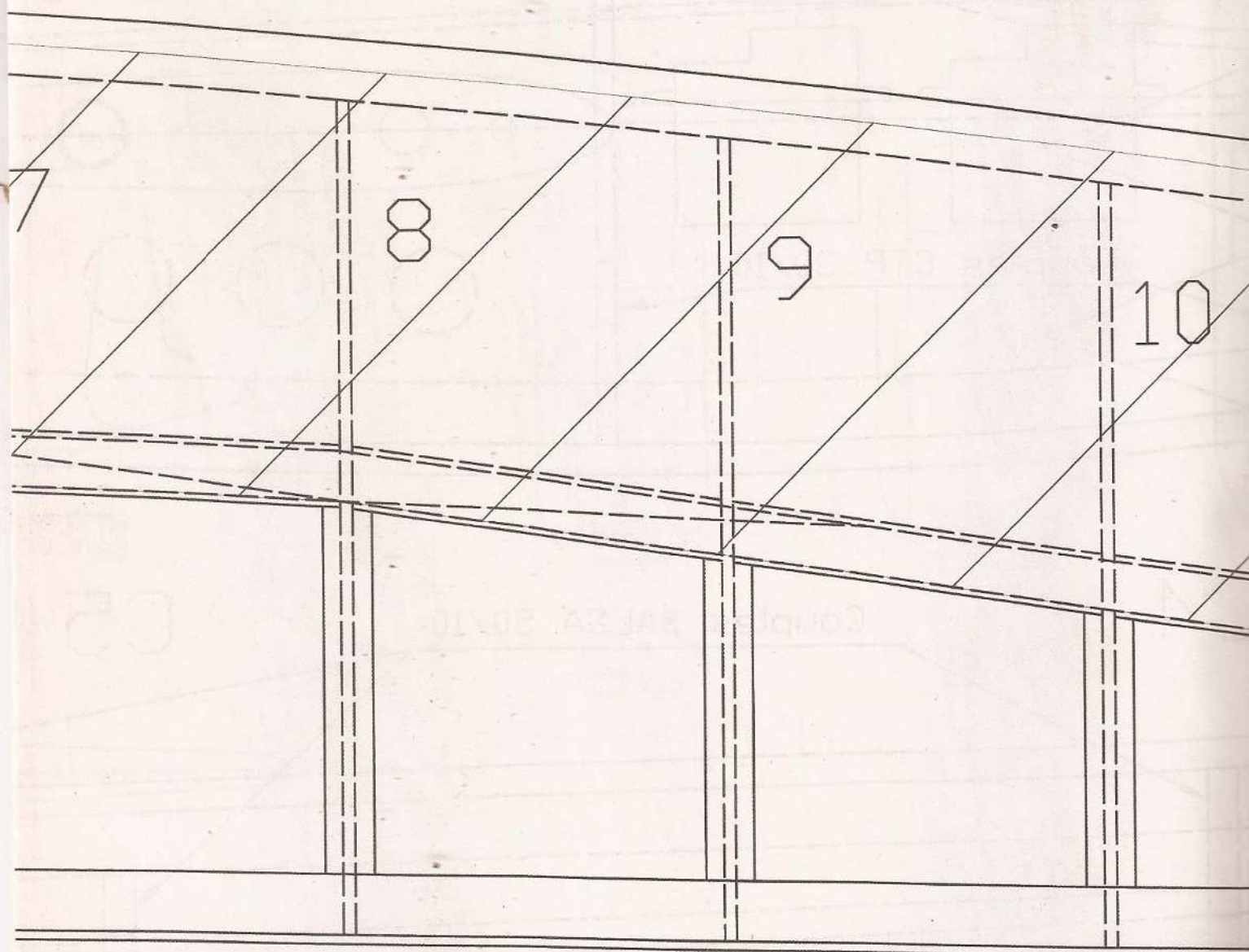


croisee a 90 .

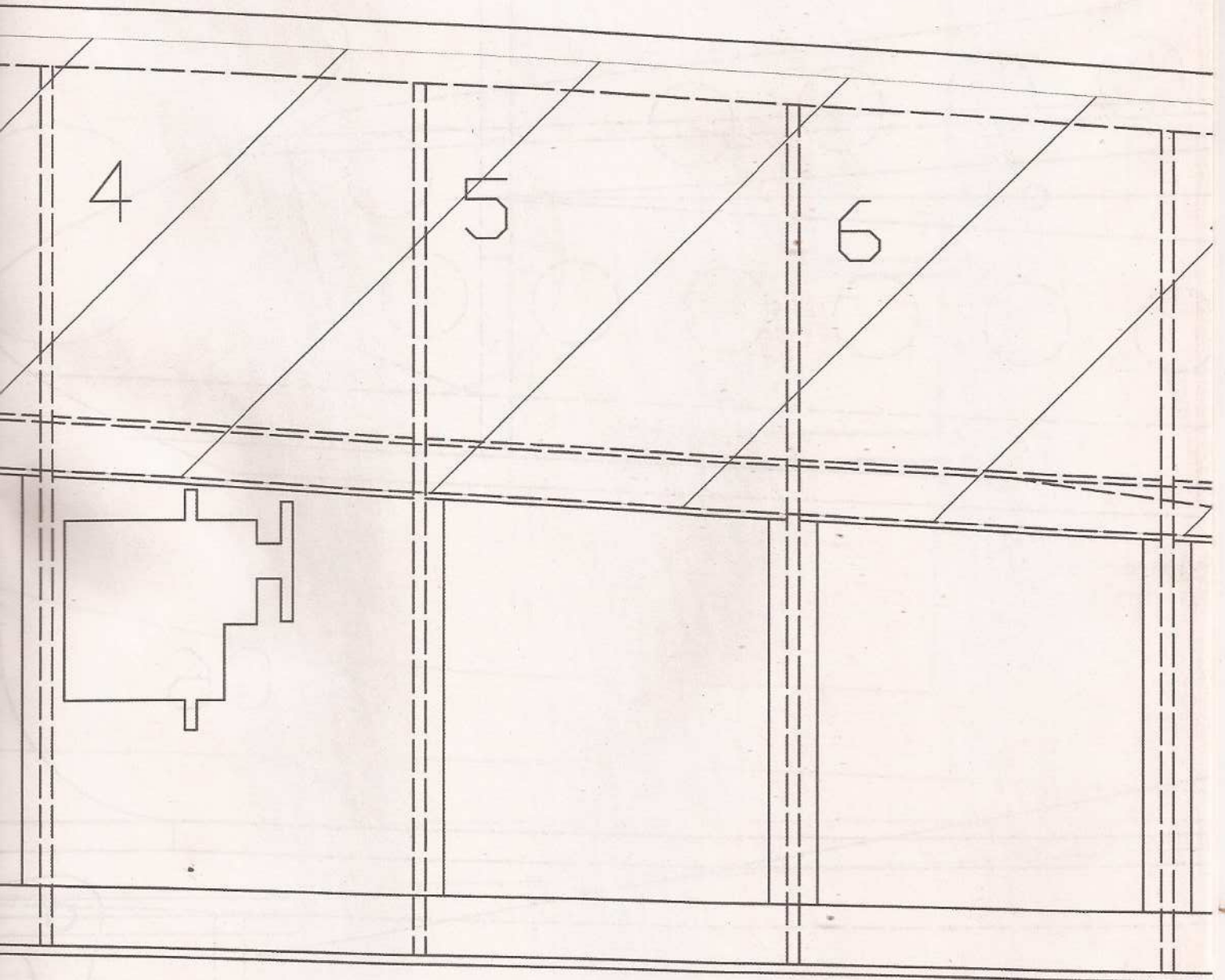


et #3 qui

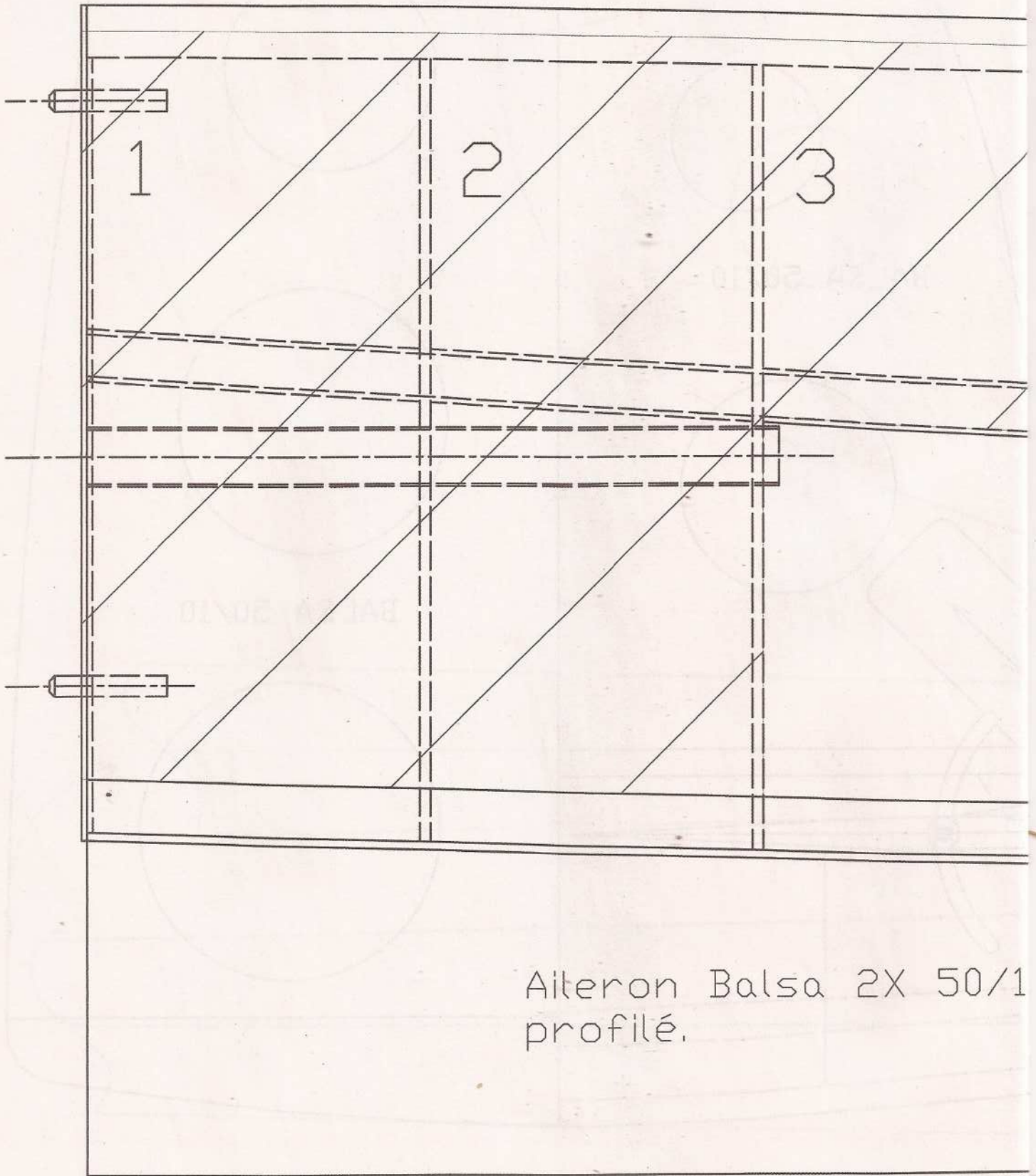
Longeron balsa 3x10



20/10 sauf #1 ; #1bis ; #2 e
sont en ctp 10/10.



Zone hachurée : coffrage
balsa 15/10



Aileron Balsa 2X 50/1
profilé.