

bloc format év. dés

balsa

standard support
diamètre 17mm

-2°

C1

C2

Ap
22/17

C100

bâti moteur-train

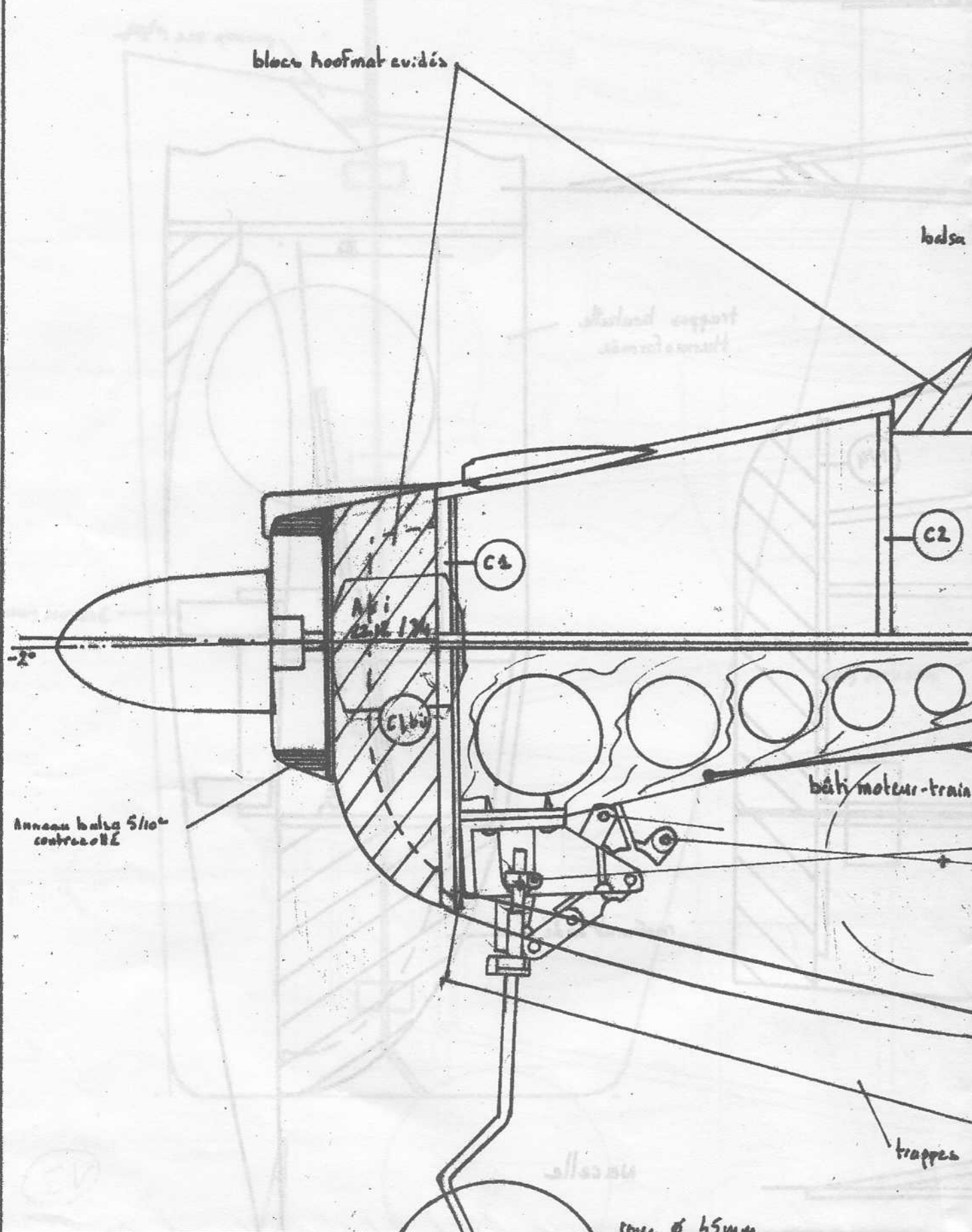
Anneau balsa 5/10
contrôle

trappes

roue Ø 45mm

59

alliage



CTP 15/10°

3x3

Parc-borise
Rhodoïd.

Vitrages latéraux
bouteille d'eau.

C3

C4

C2b2

C3b2

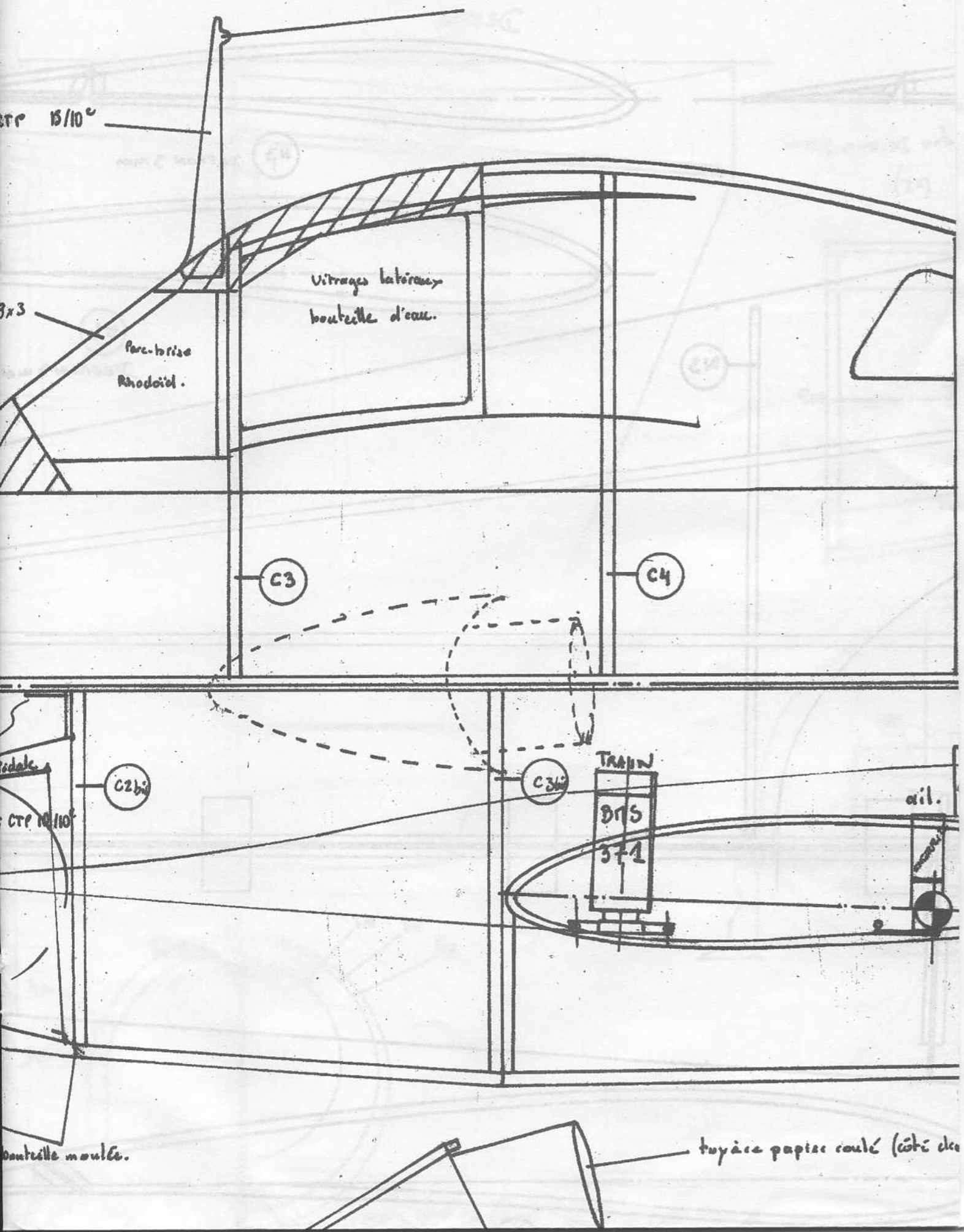
TRAIN

BT5
371

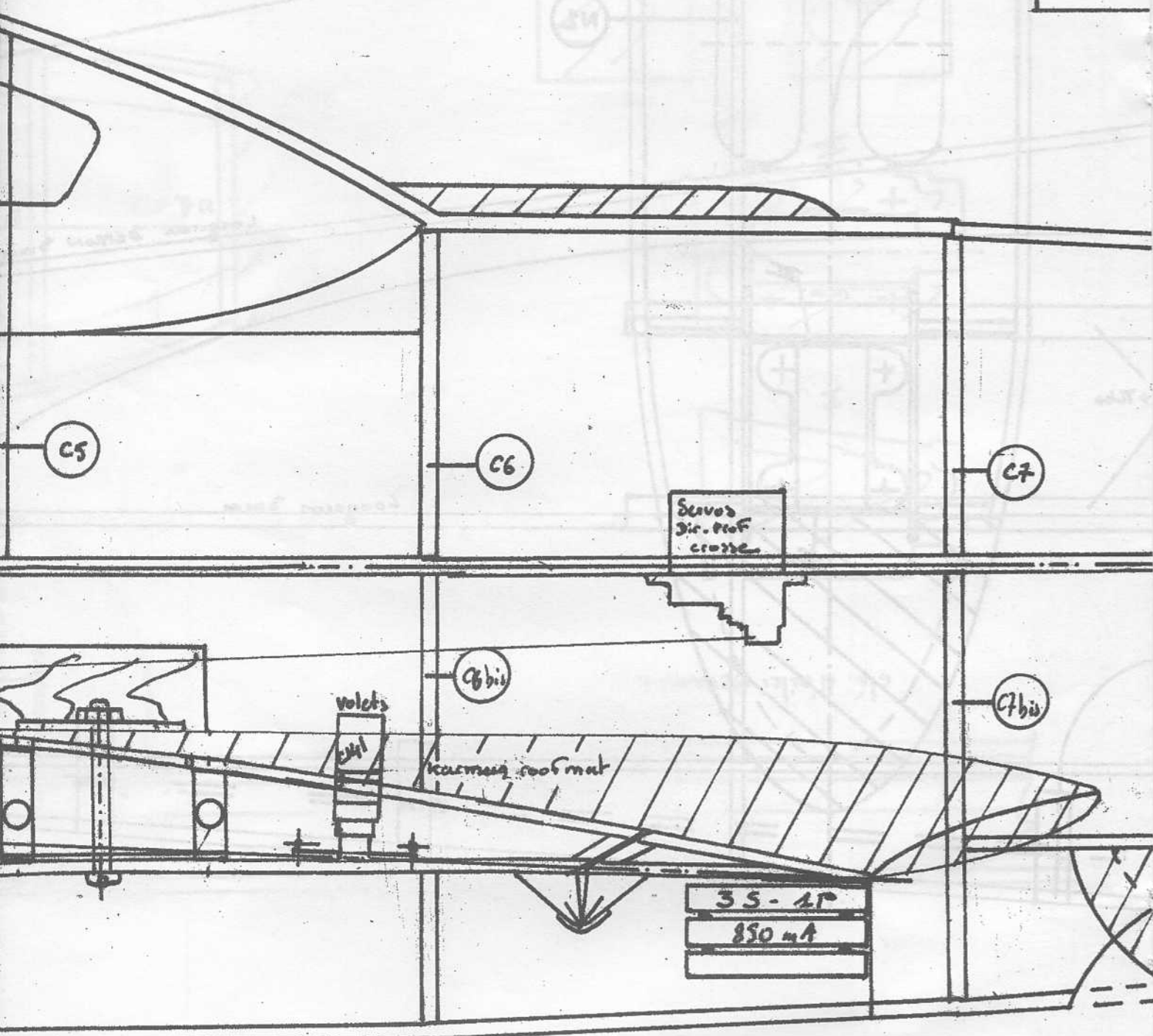
ail.

bouteille moulée.

tuyère papier roulé (côté élec)

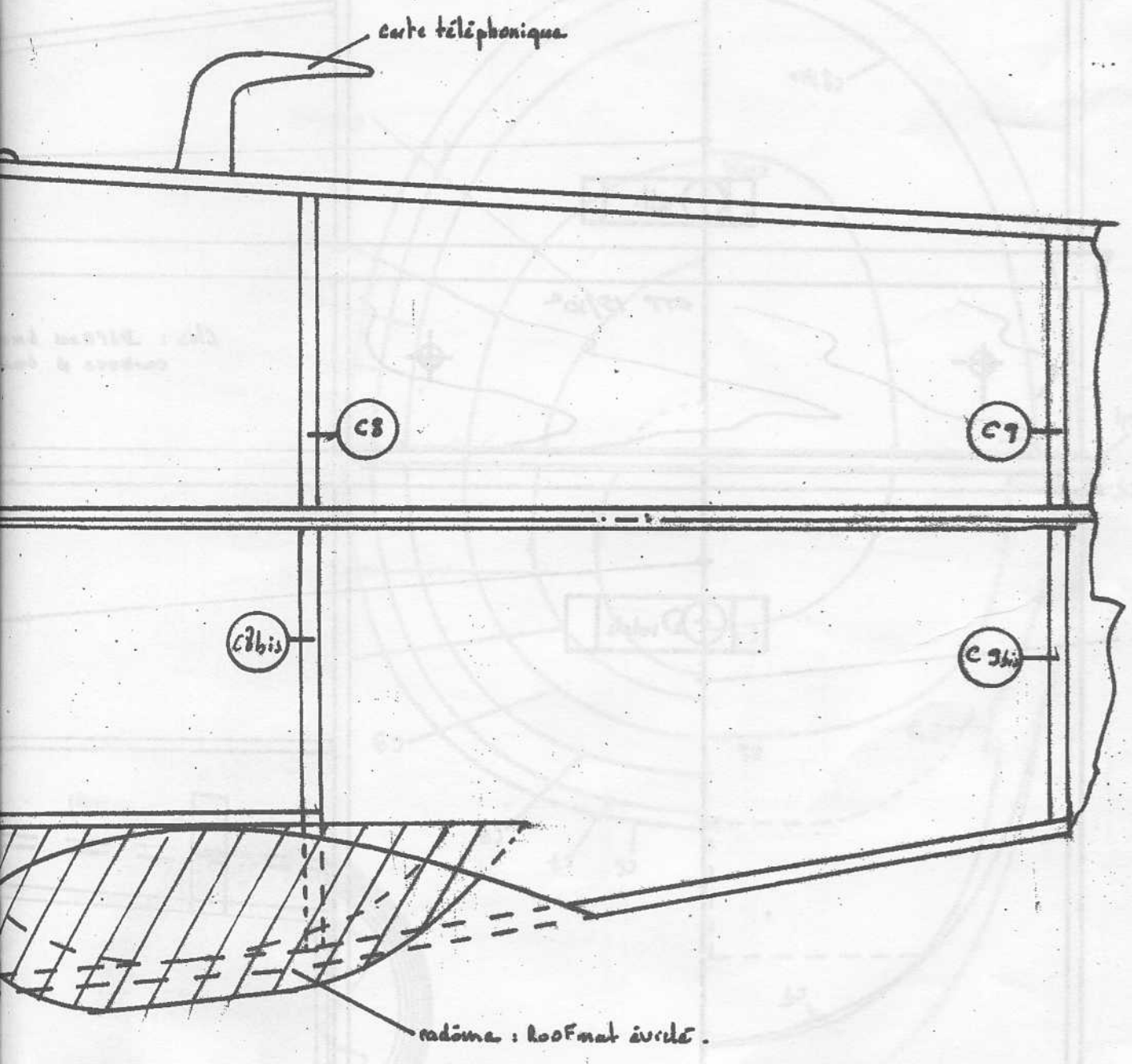


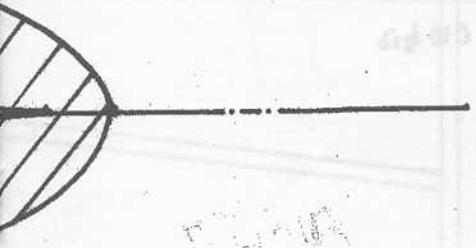
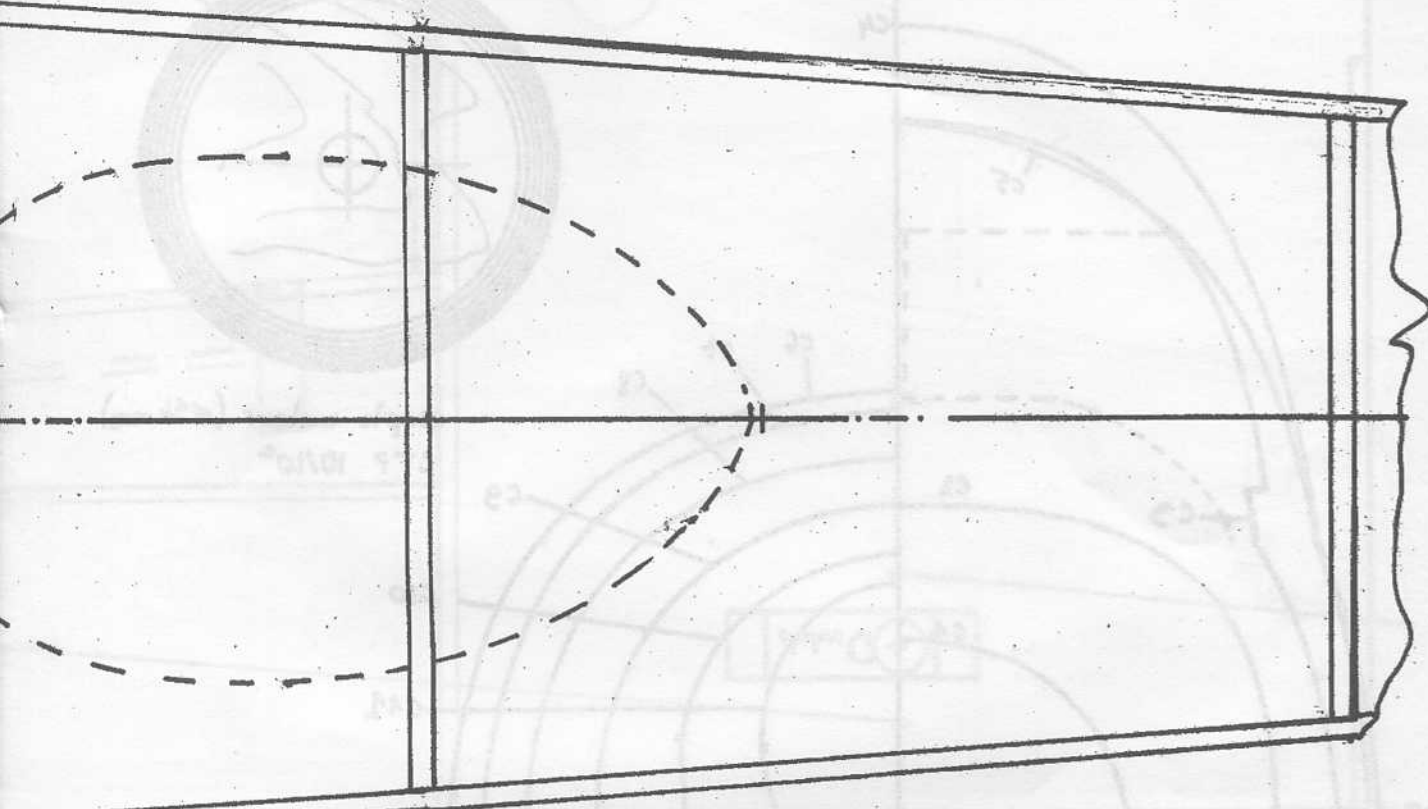
CC



(it sculemmat)

	A
CONCEPTION ET DESSIN: PH. JAMET	
DATE : 03/2005	A 786
M.R.A	alizé

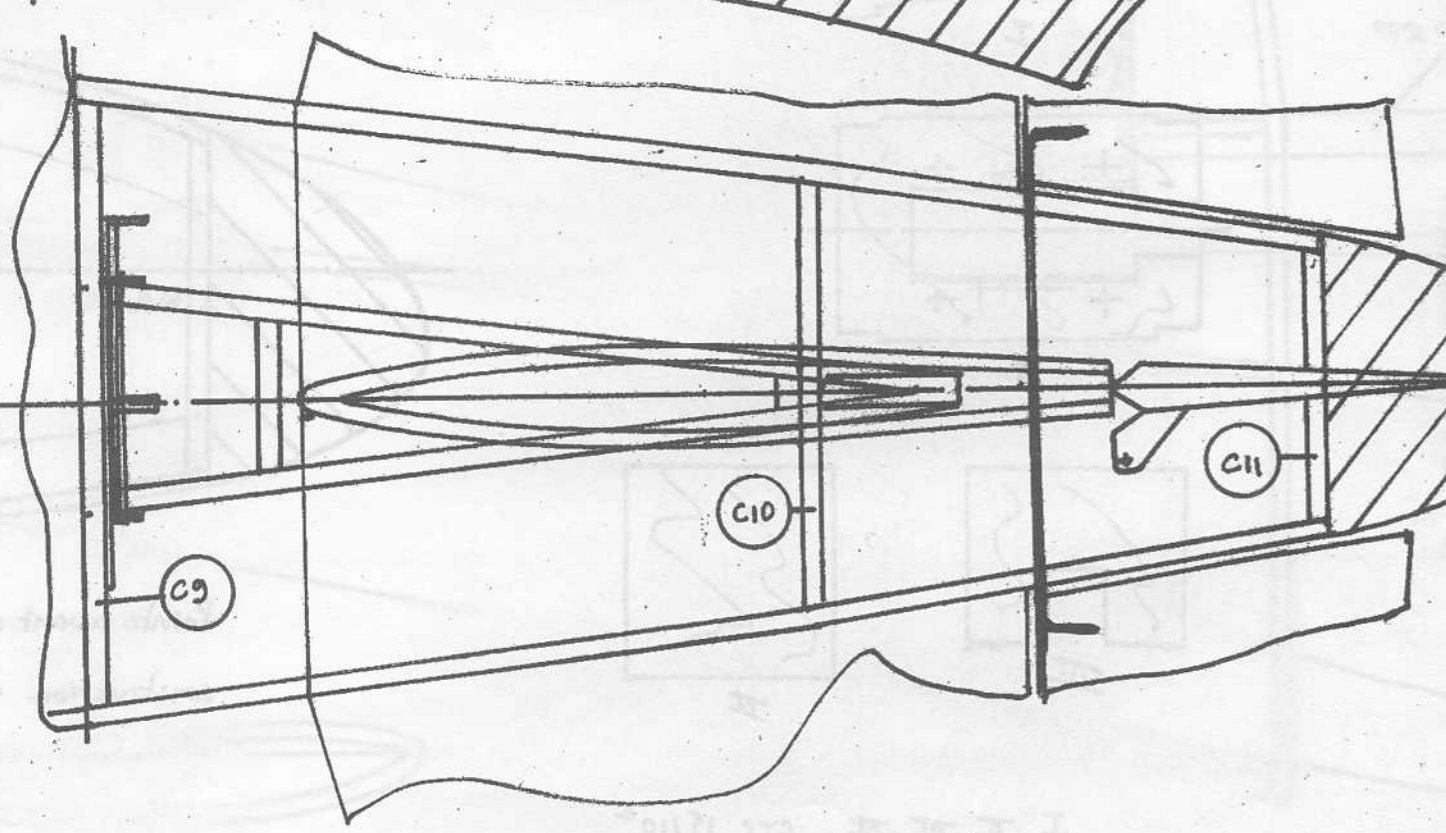
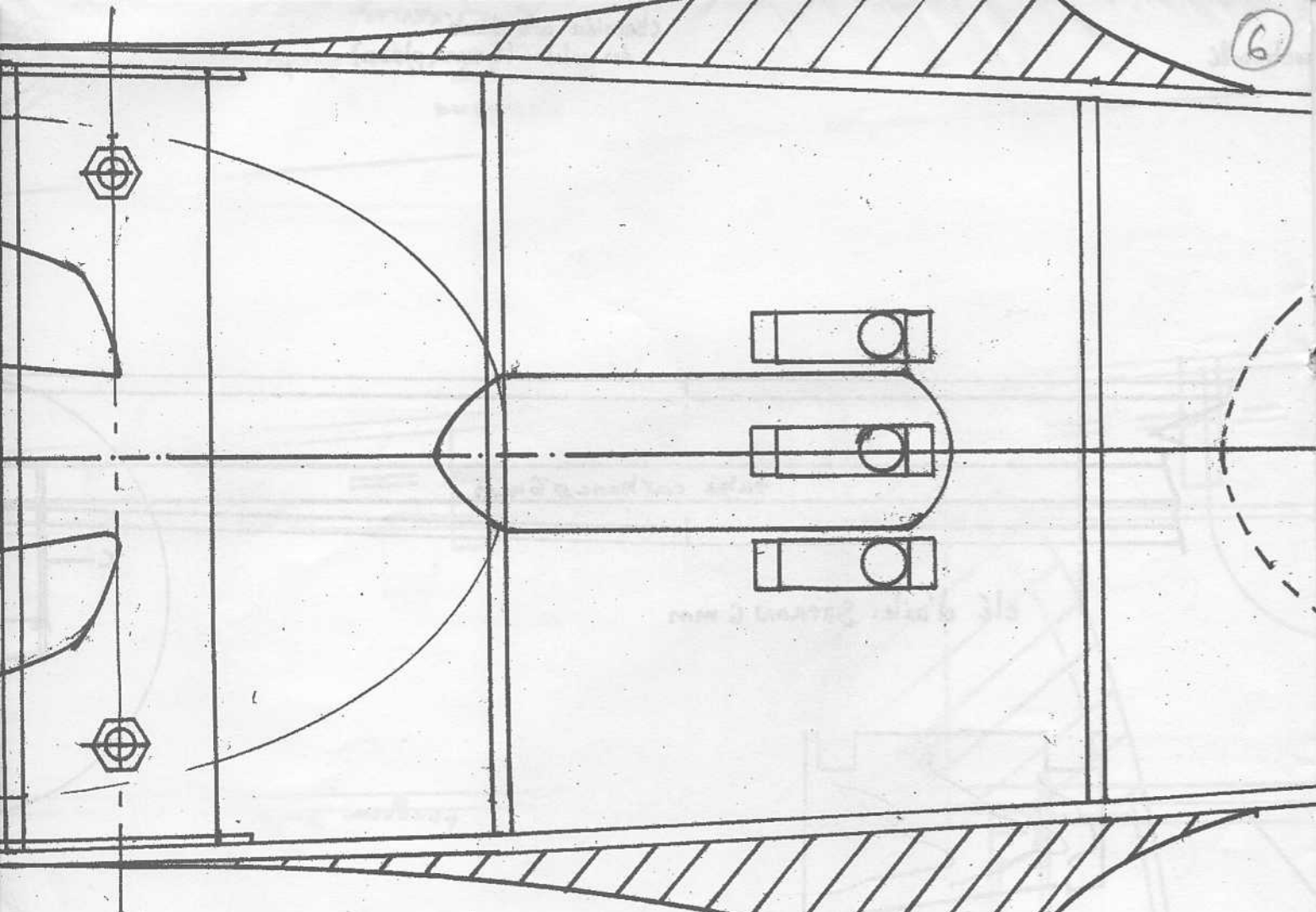




Handwritten text, possibly a date or reference number, appearing as "1947".

Handwritten text, possibly a title or description, appearing as "Top View, Detail of".

6



I. K. M. M. ...
(part de leur principal)

