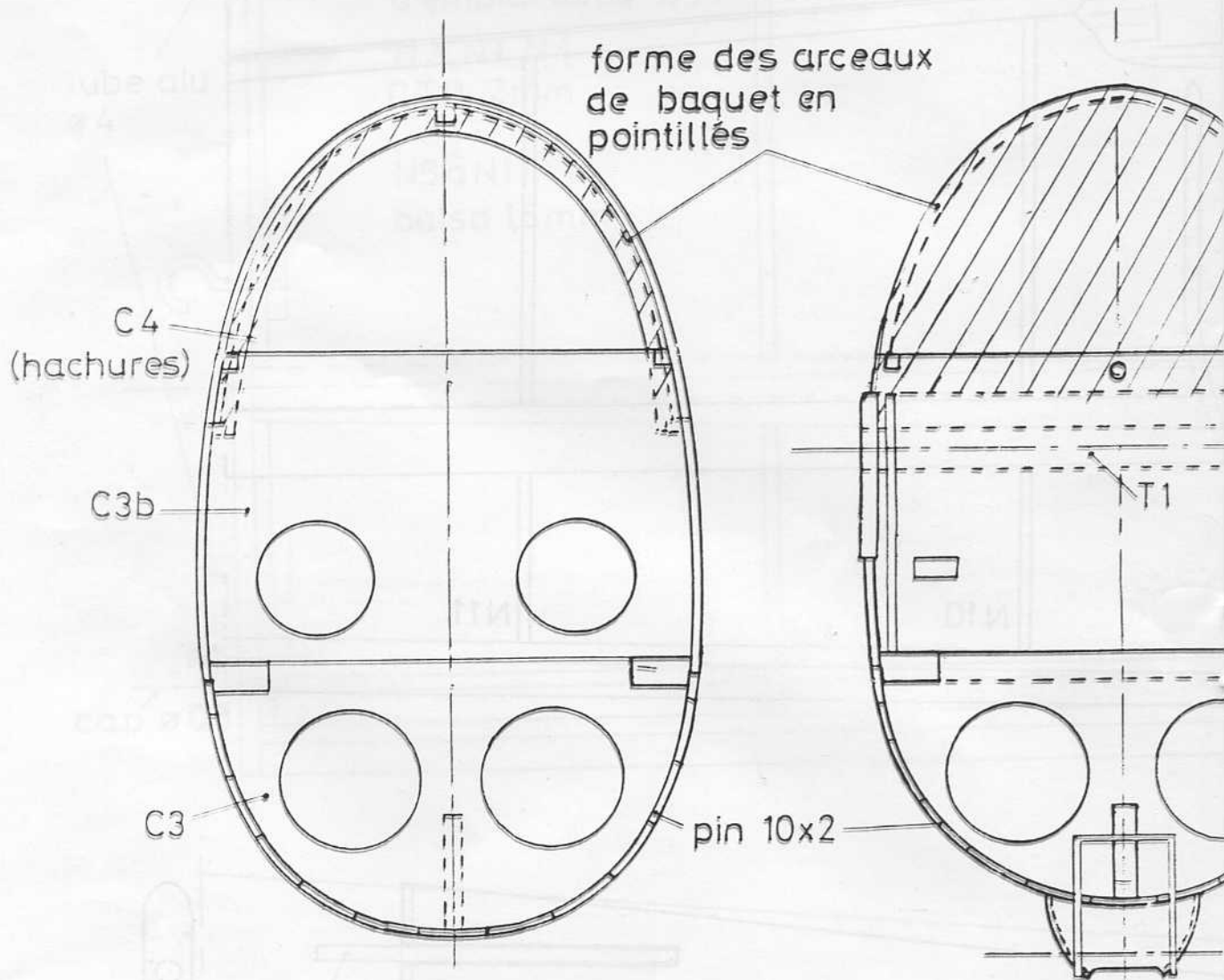


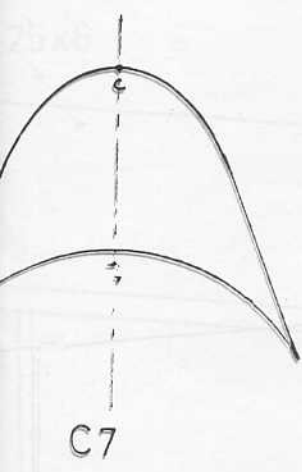
BREGUET 906 "Choucas"

MODELE			
Profil:	Eppler 203	Charge alaire:	37gr/dm ²
Envergure:	2,30m	Poids:	1,1kg
Longueur:	1m	Radio:	3 voies
GRANDEUR			
1er vol:	26/10/59	Constructeur:	BREGUET
Envergure:	18m	Poids:	245/282kg
Longueur:	7,9m	Finesse	32 à 90km/h

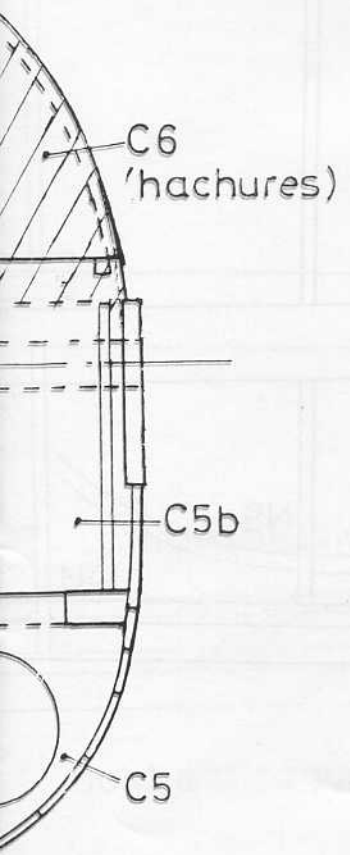
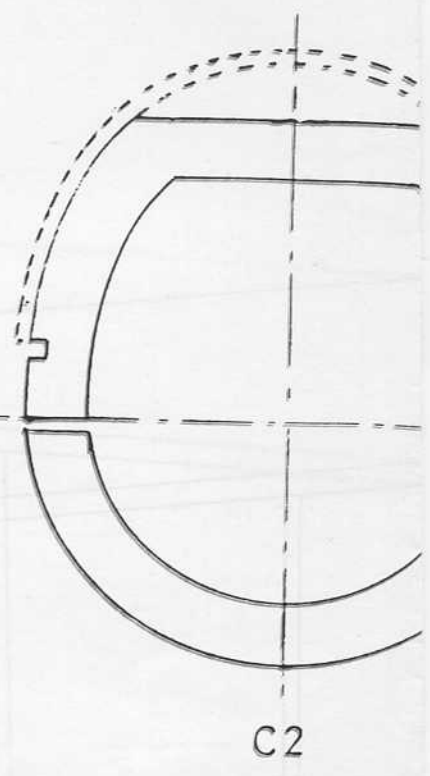
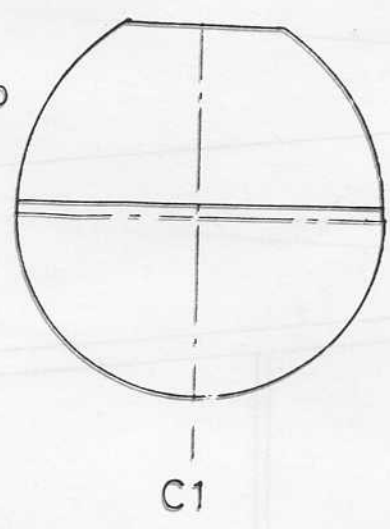


C1b, C2b, C7, C1, C4, C6, CTP 2mm
 C2, C3, C3b, C5, C5b, CTP 3mm

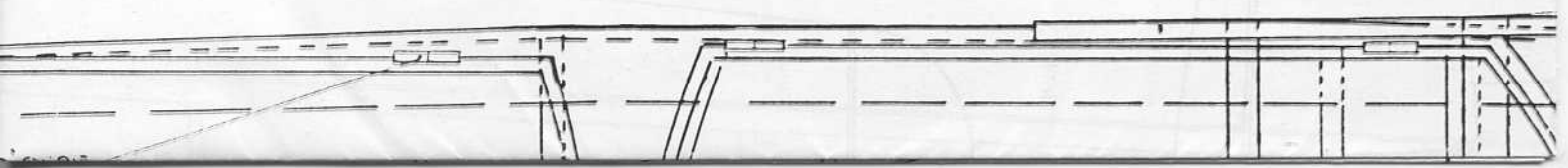
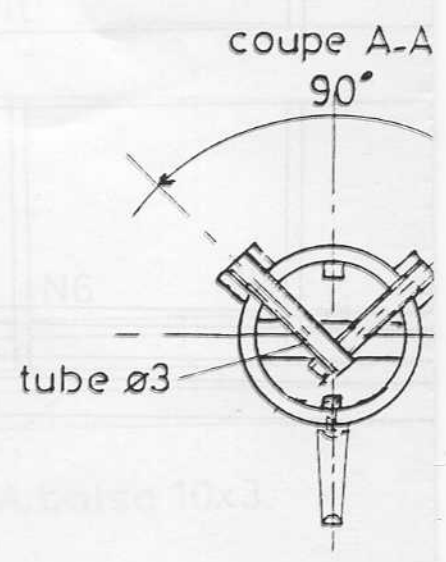
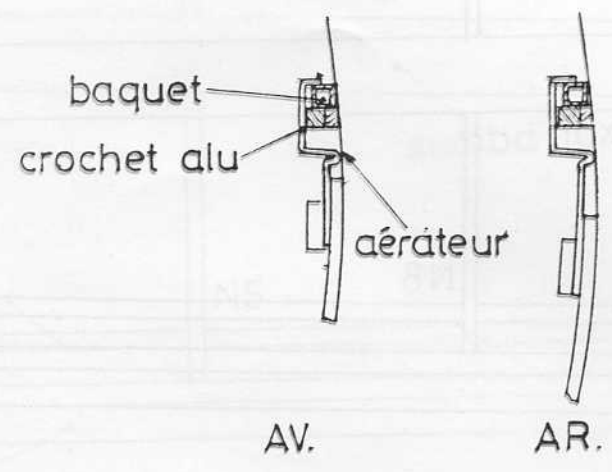
2

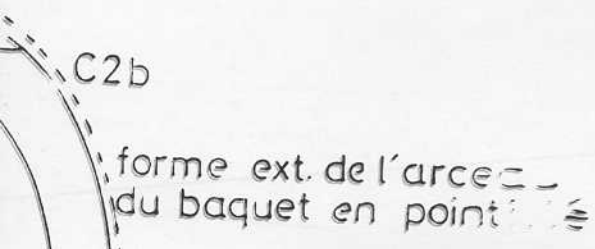


C1b



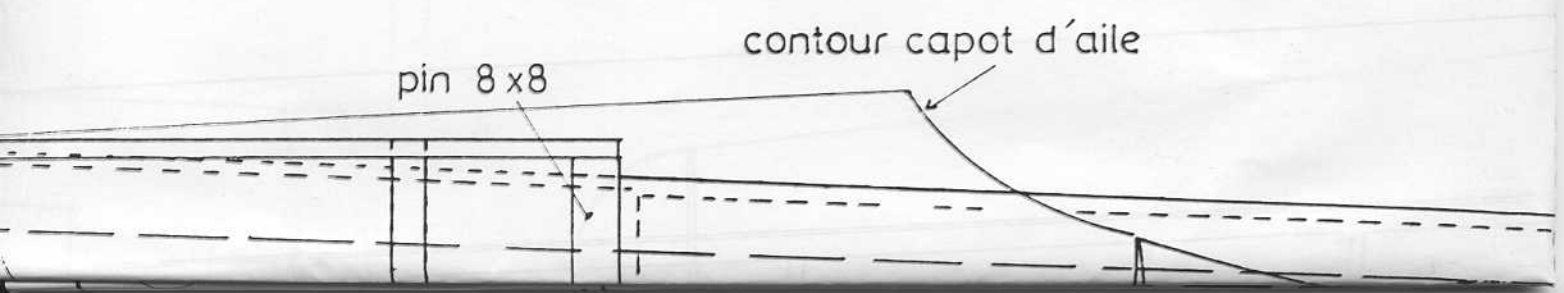
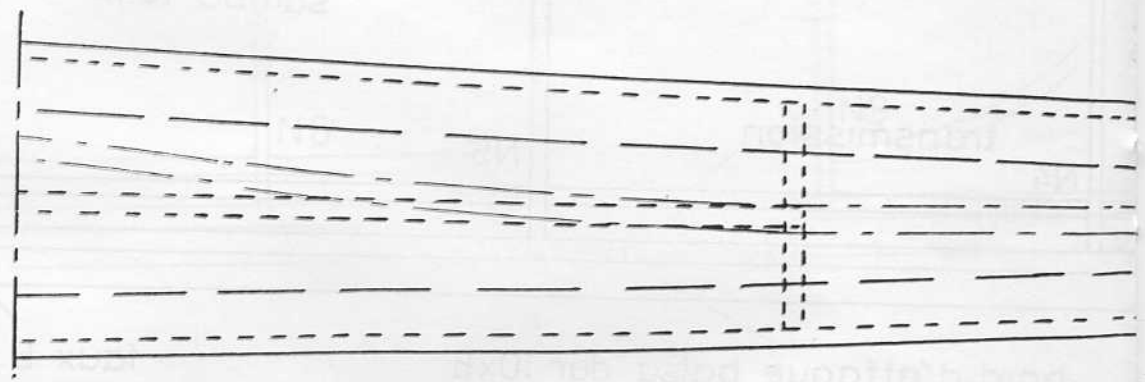
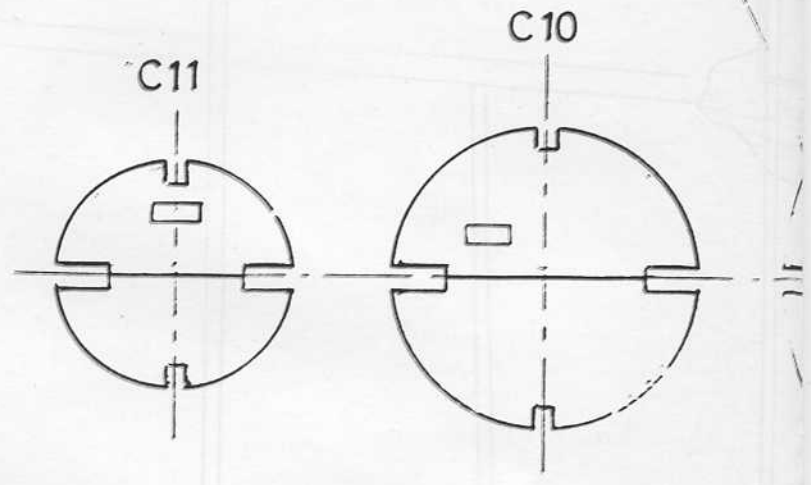
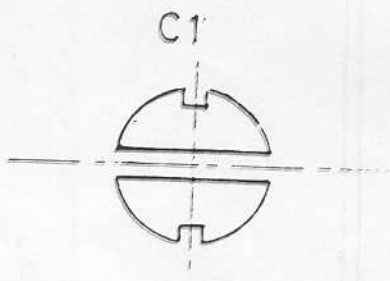
systeme de verrouillage des cockpit





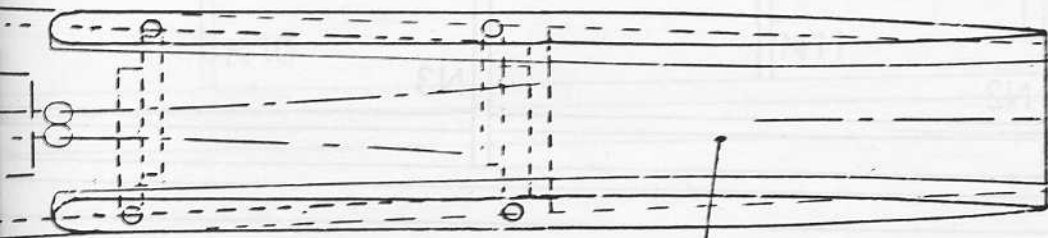
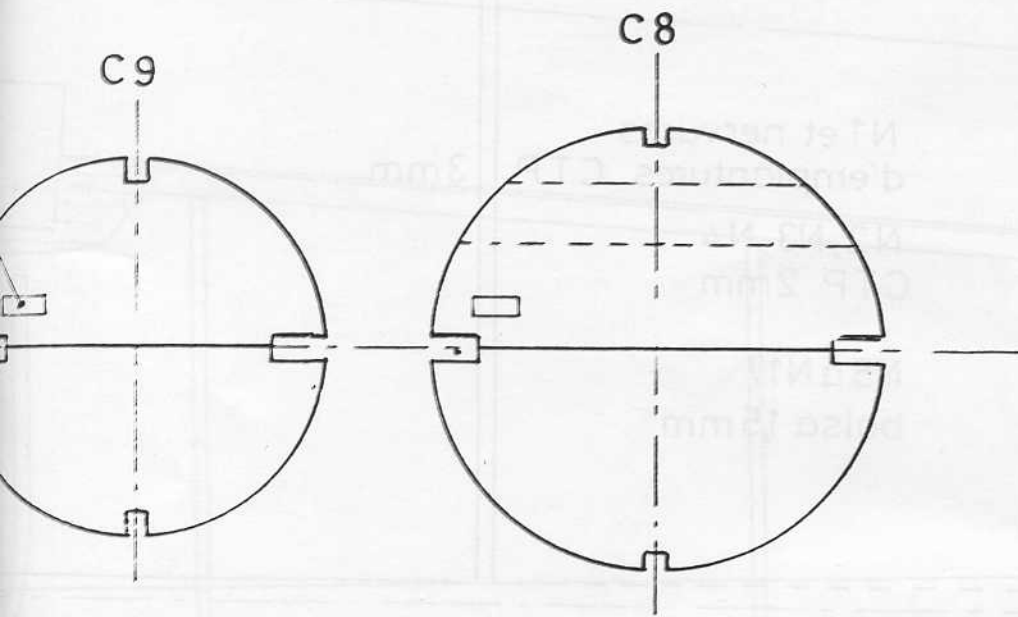
couple C8a

passage transmiss

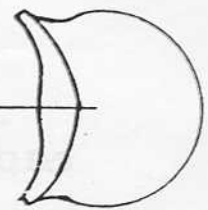


12 balsa 3mm

ons

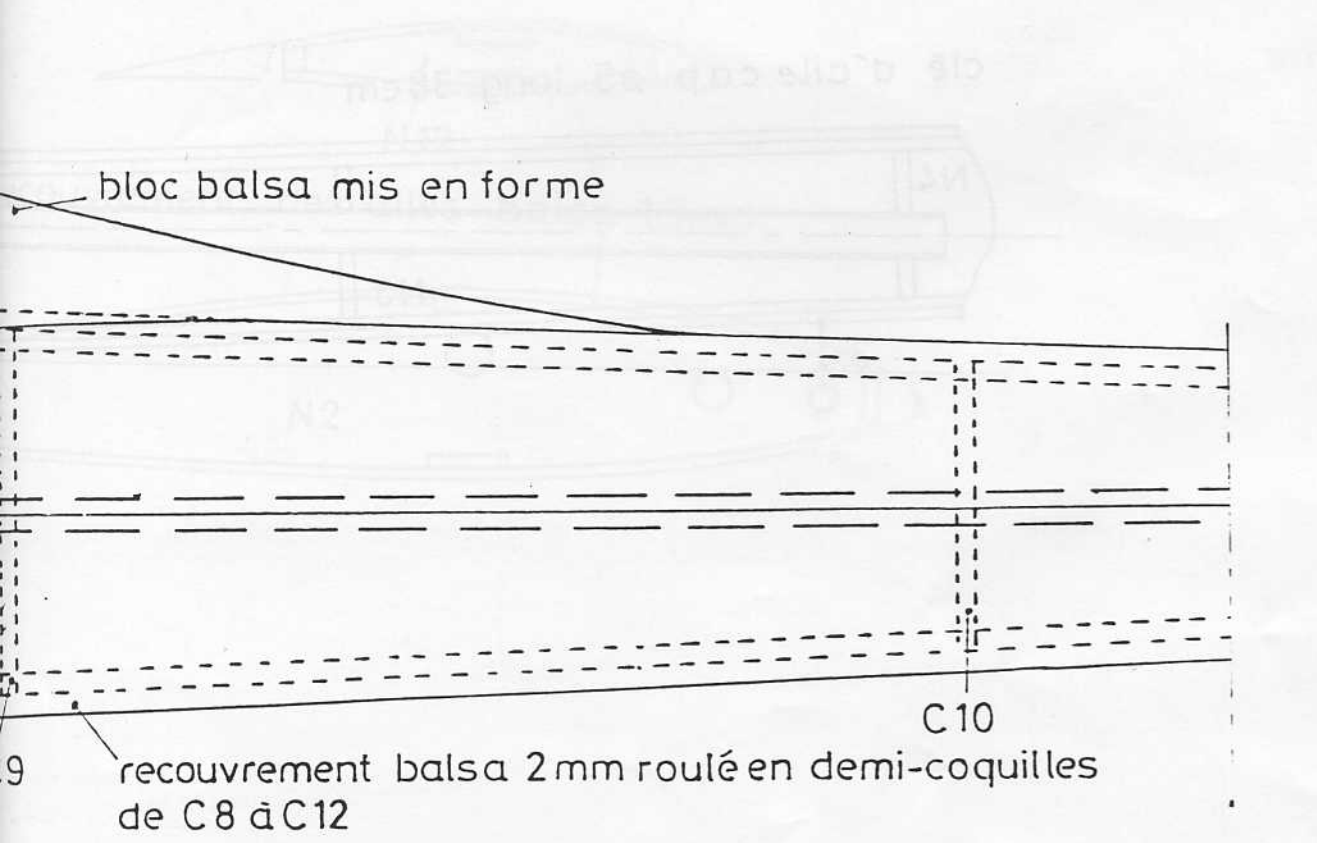
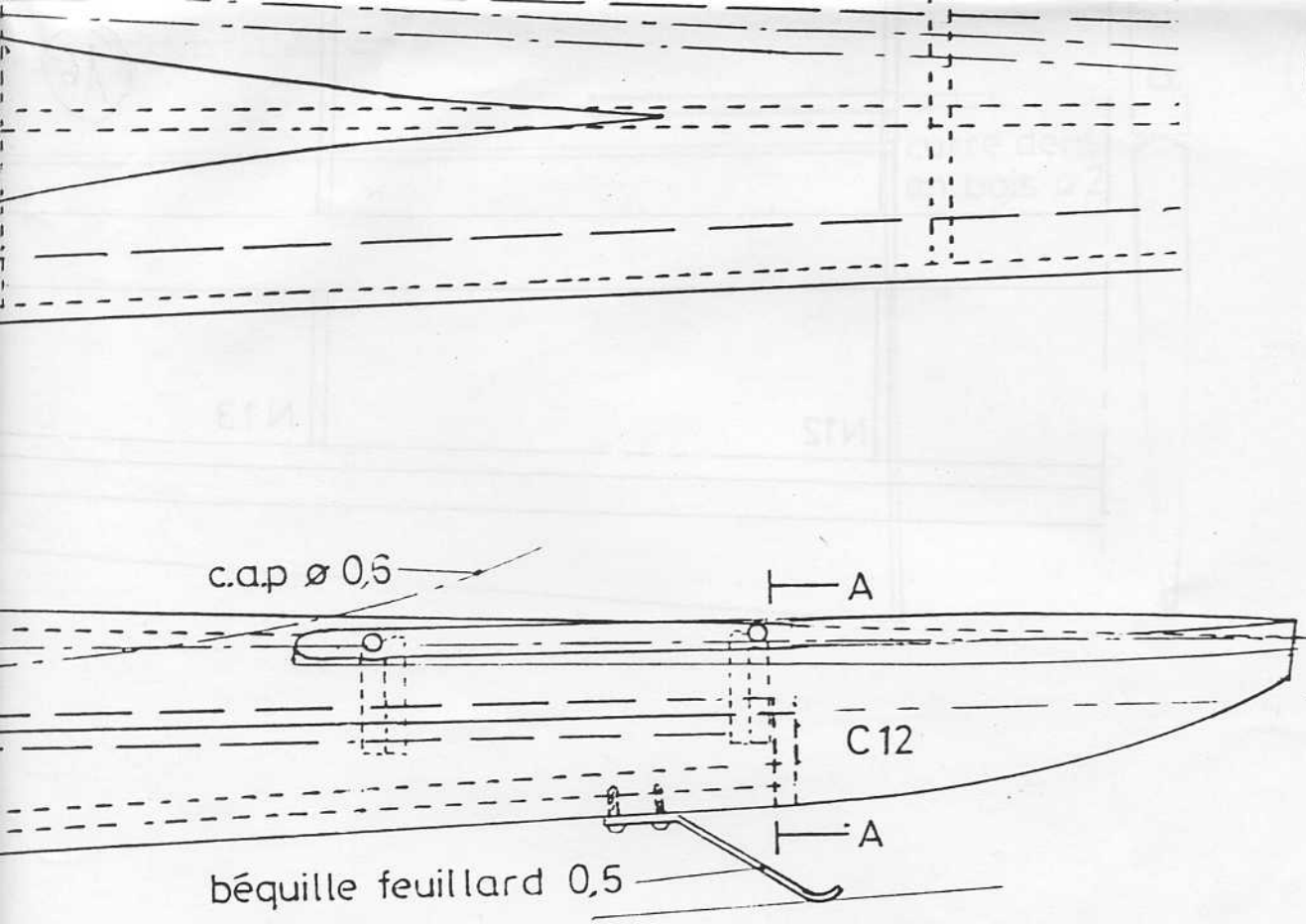


blóc balsa
mis en forme

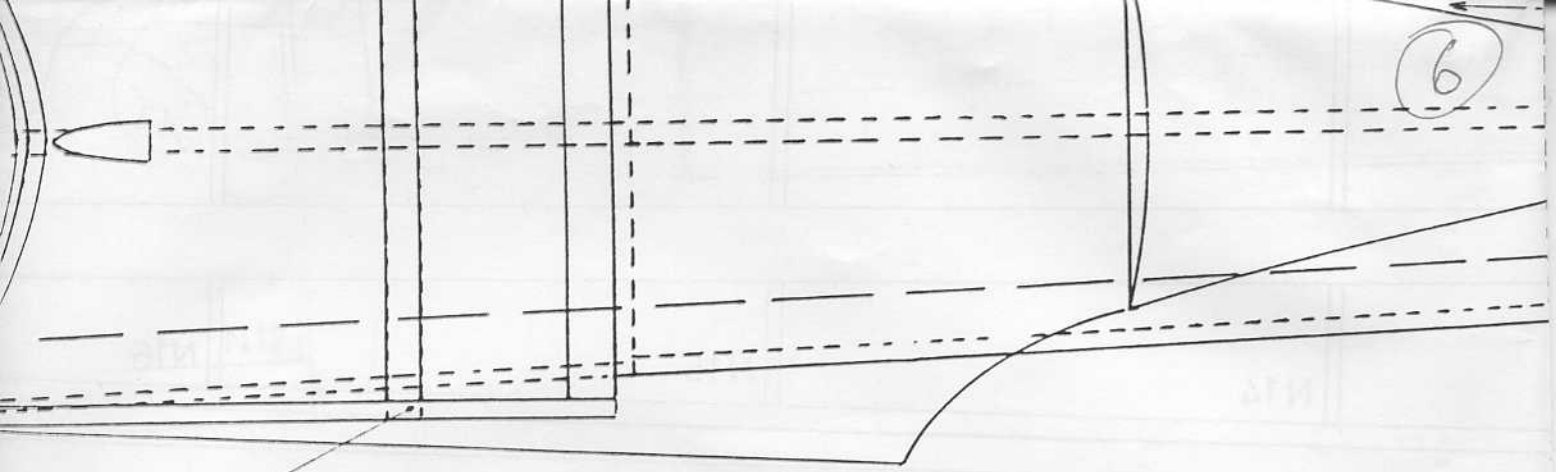


vue de
la queue

5

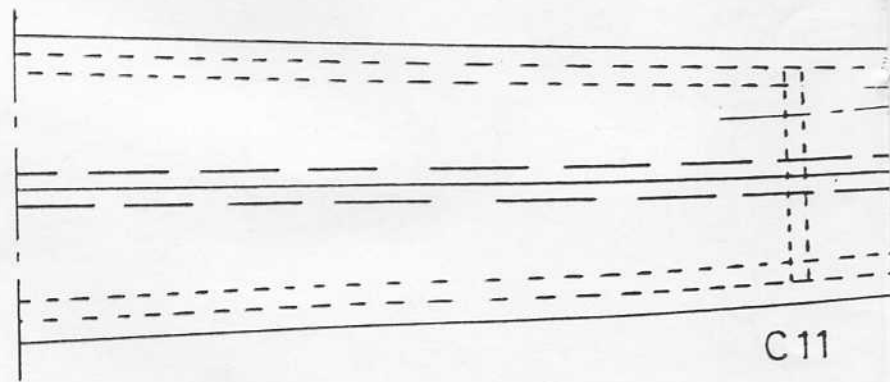


6



aluminium ø5

générateur tube ø 4
du capot



C11

calage aile +5°
stab.+2°

axe ø2 collé dans le bloc

C6

capot thermoformé

C7

N1

G

b

balsa 3x3

C8

thermoformé

