

①

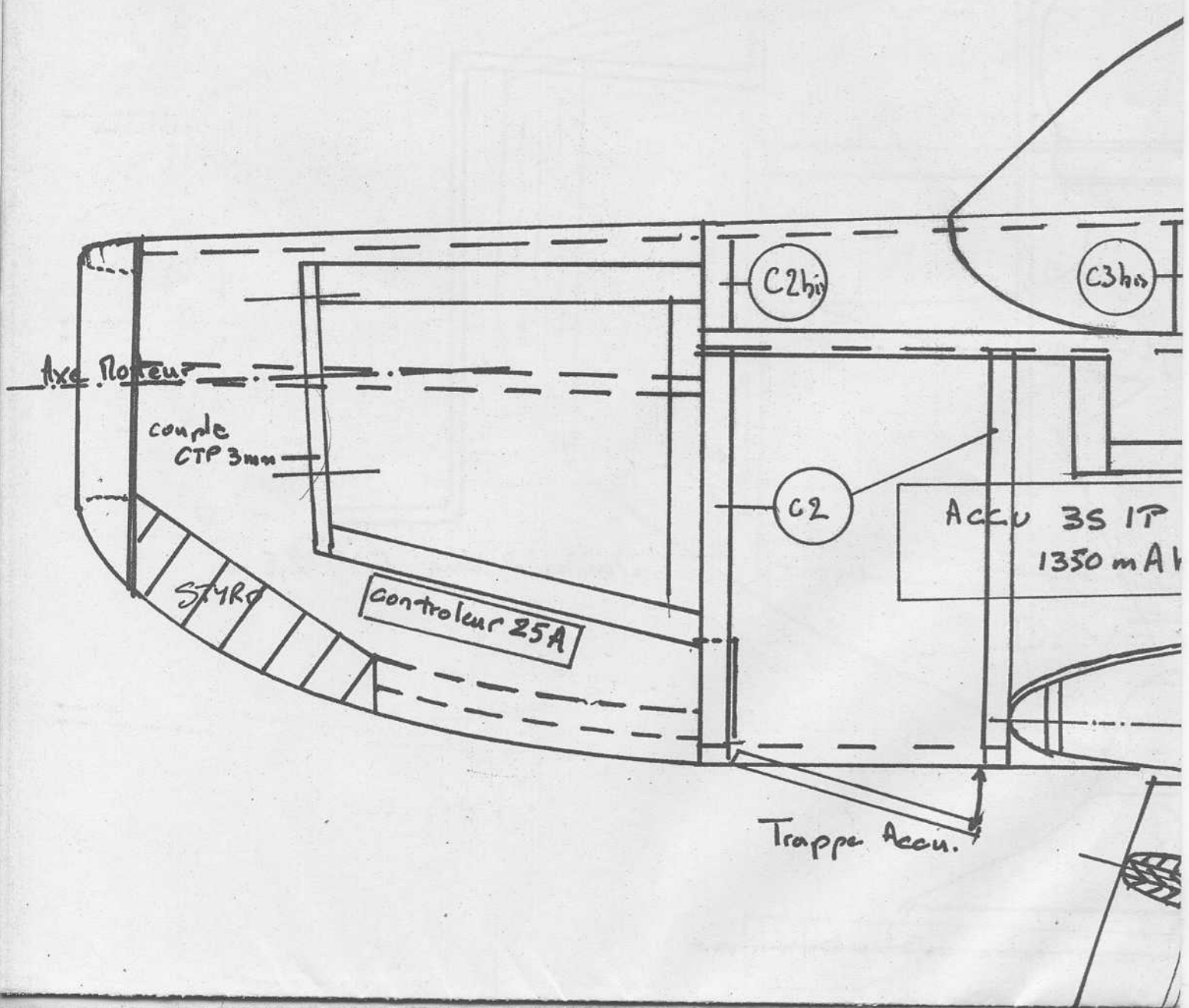
LE CAP 10

MRA

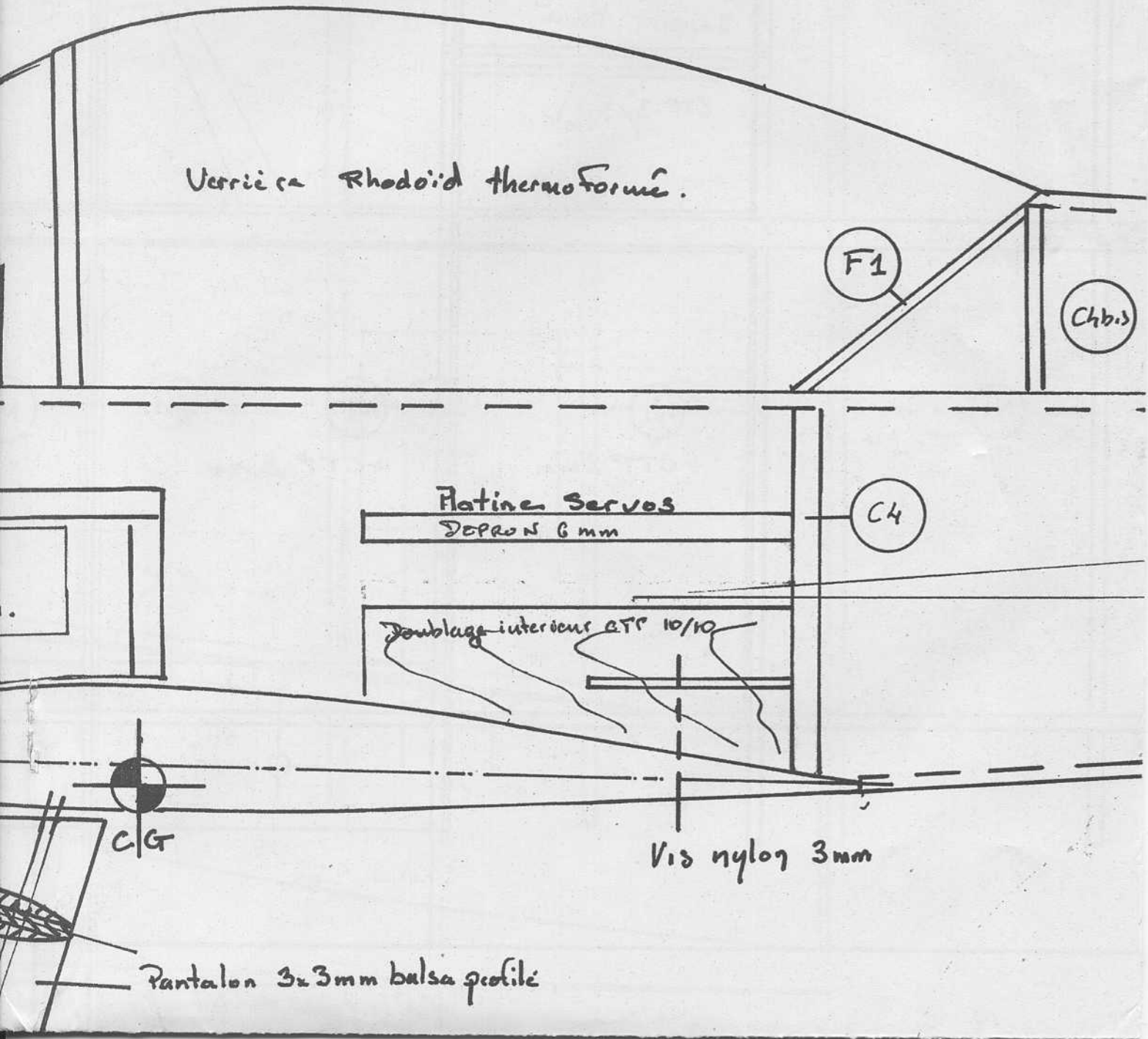
Etude et réalisation : Philippe Jamet

Plan 1/2

Revue MRA845 - Avril/Mai 2015



2



Verrière Rhodoid thermoformé.

F1

C4bis

Platine Servos
DEPRON 6mm

C4

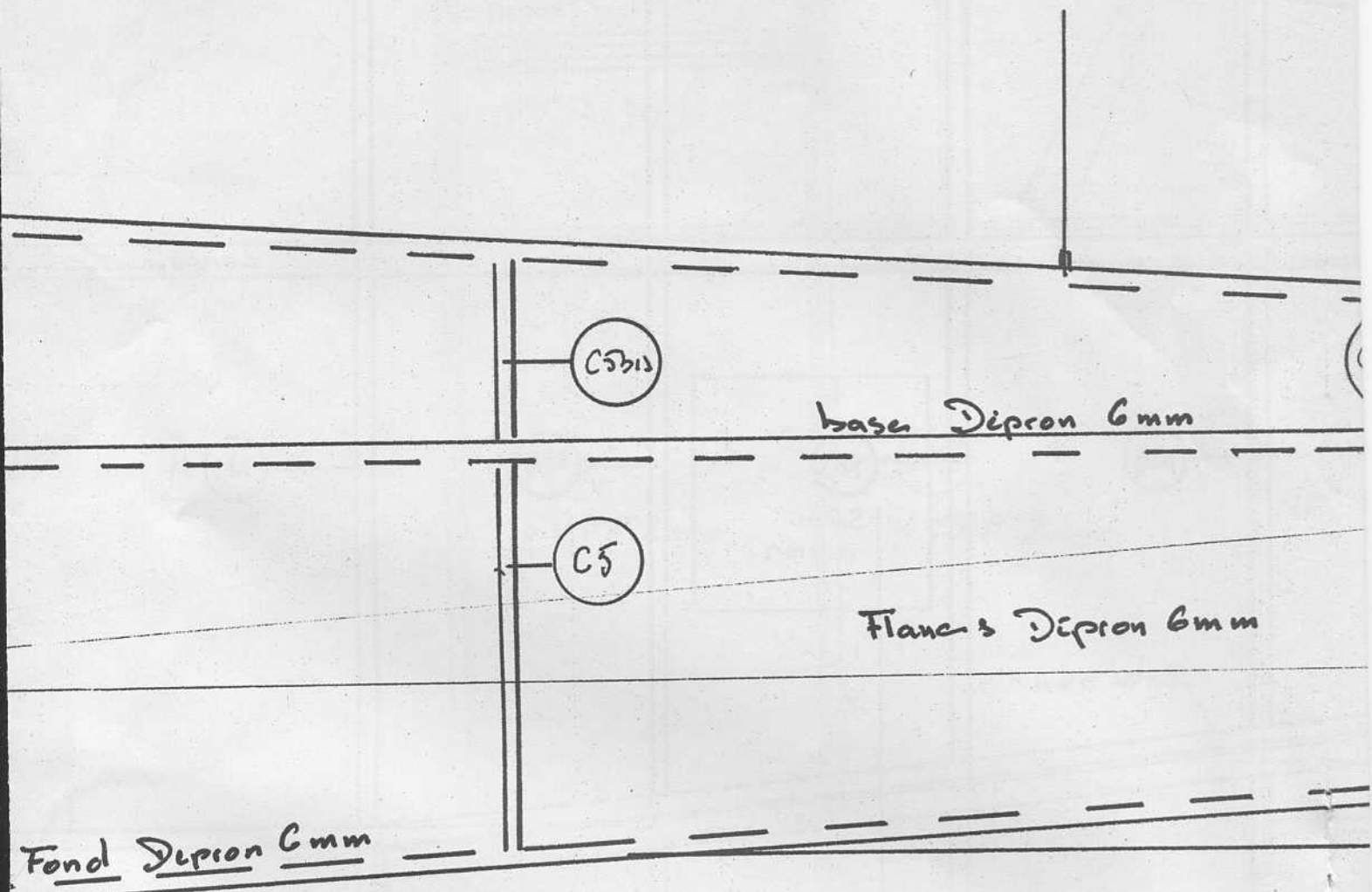
Doublage intérieur GFR 10/10

C/G

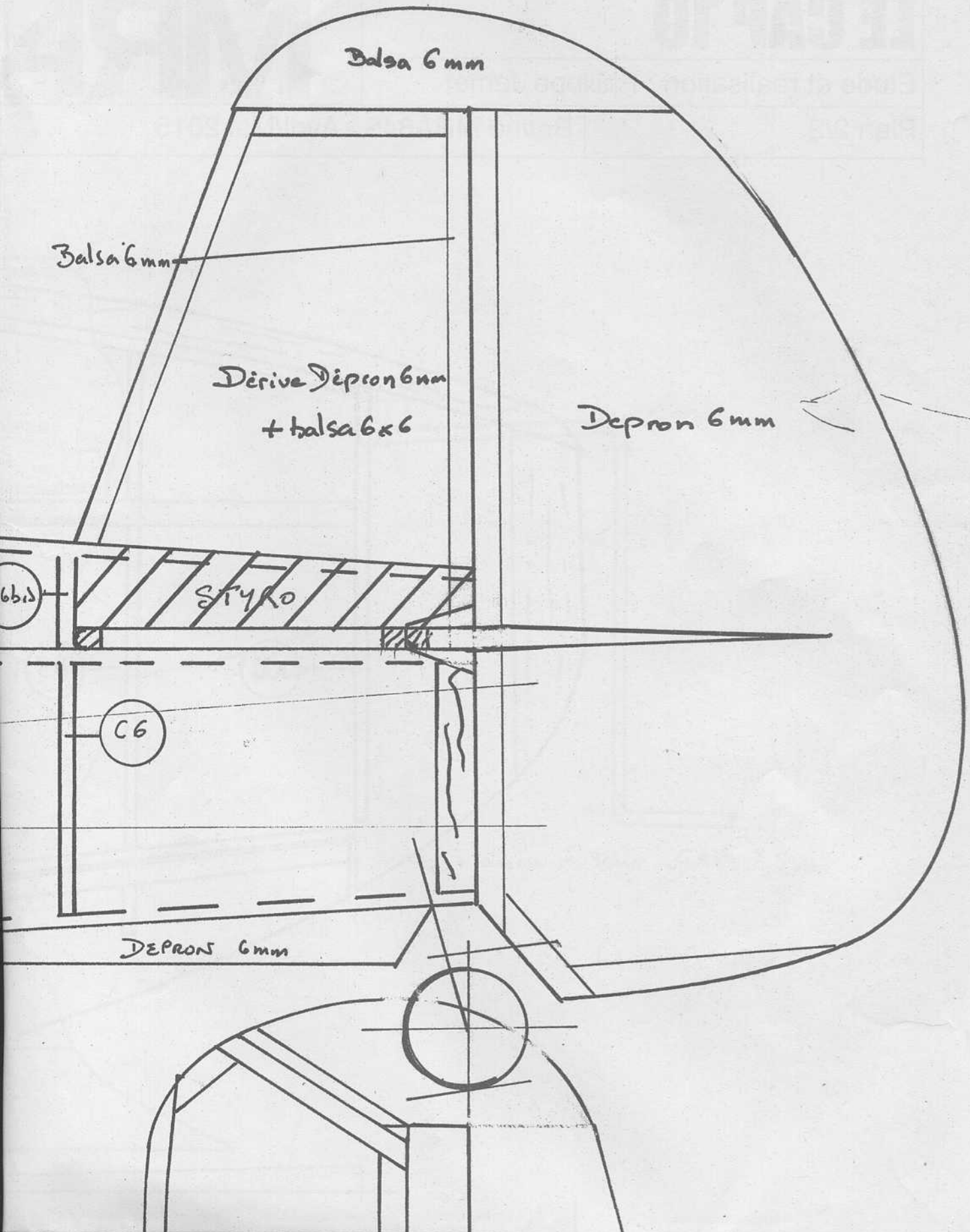
Vis nylon 3mm

Pantalon 3x3mm balsa profilé

3



4

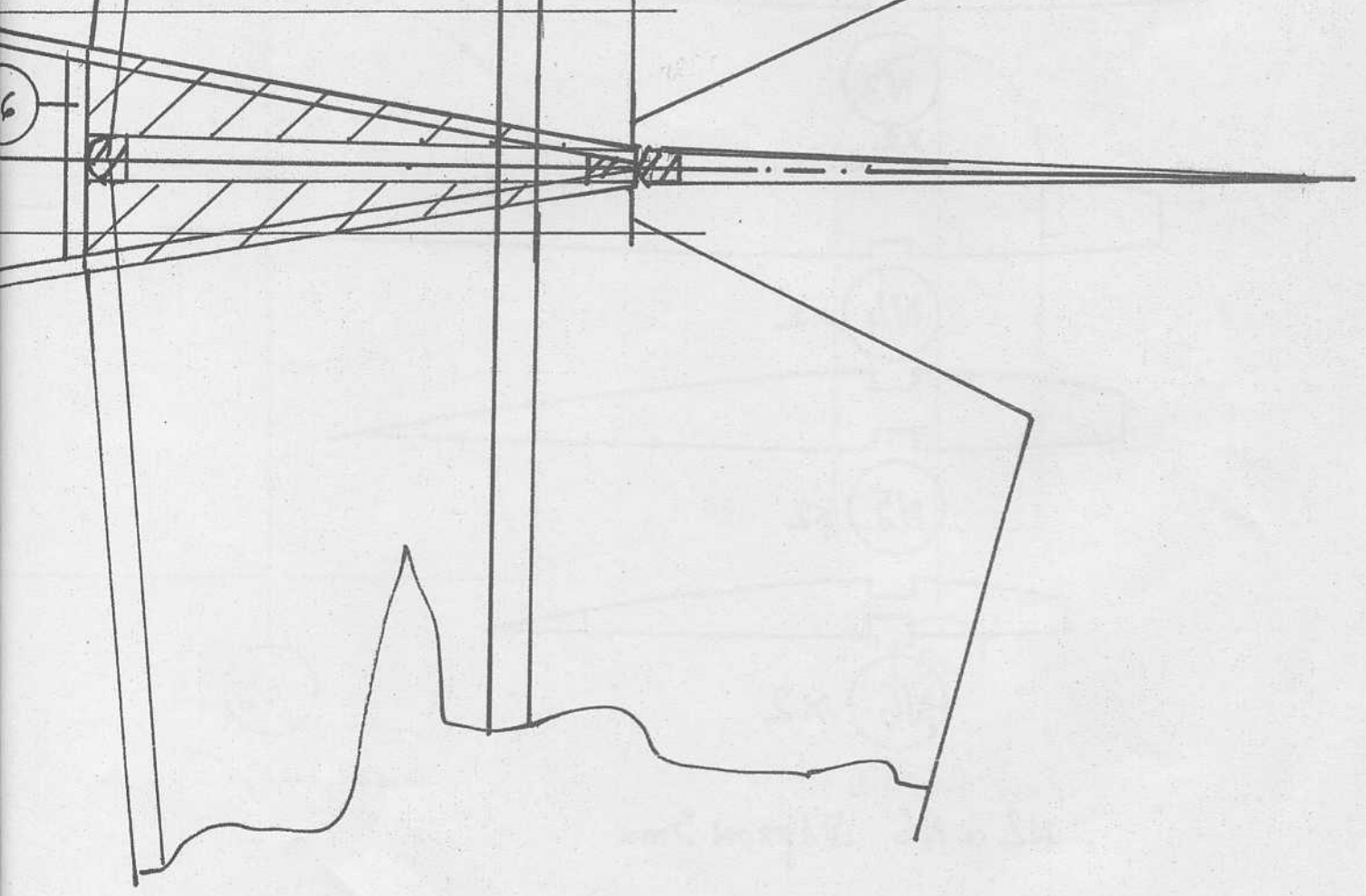


balsa 6mm

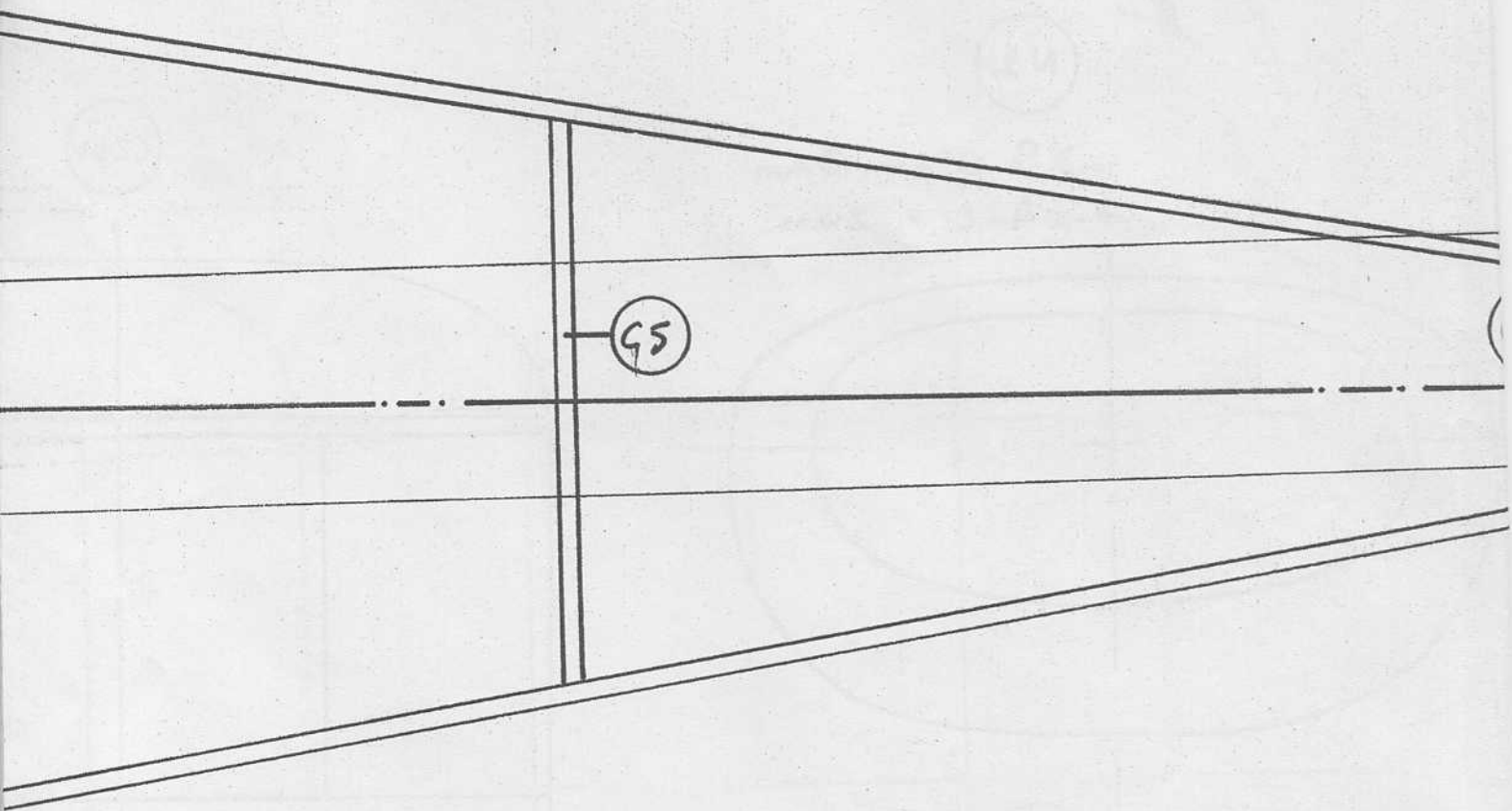
Stab Depron
6mm
+
balsa 6x6

balsa
6mm

Depron
6mm



5



(6)

Capot de roue
mousse poncée
+ F.D.V

(C3bin)

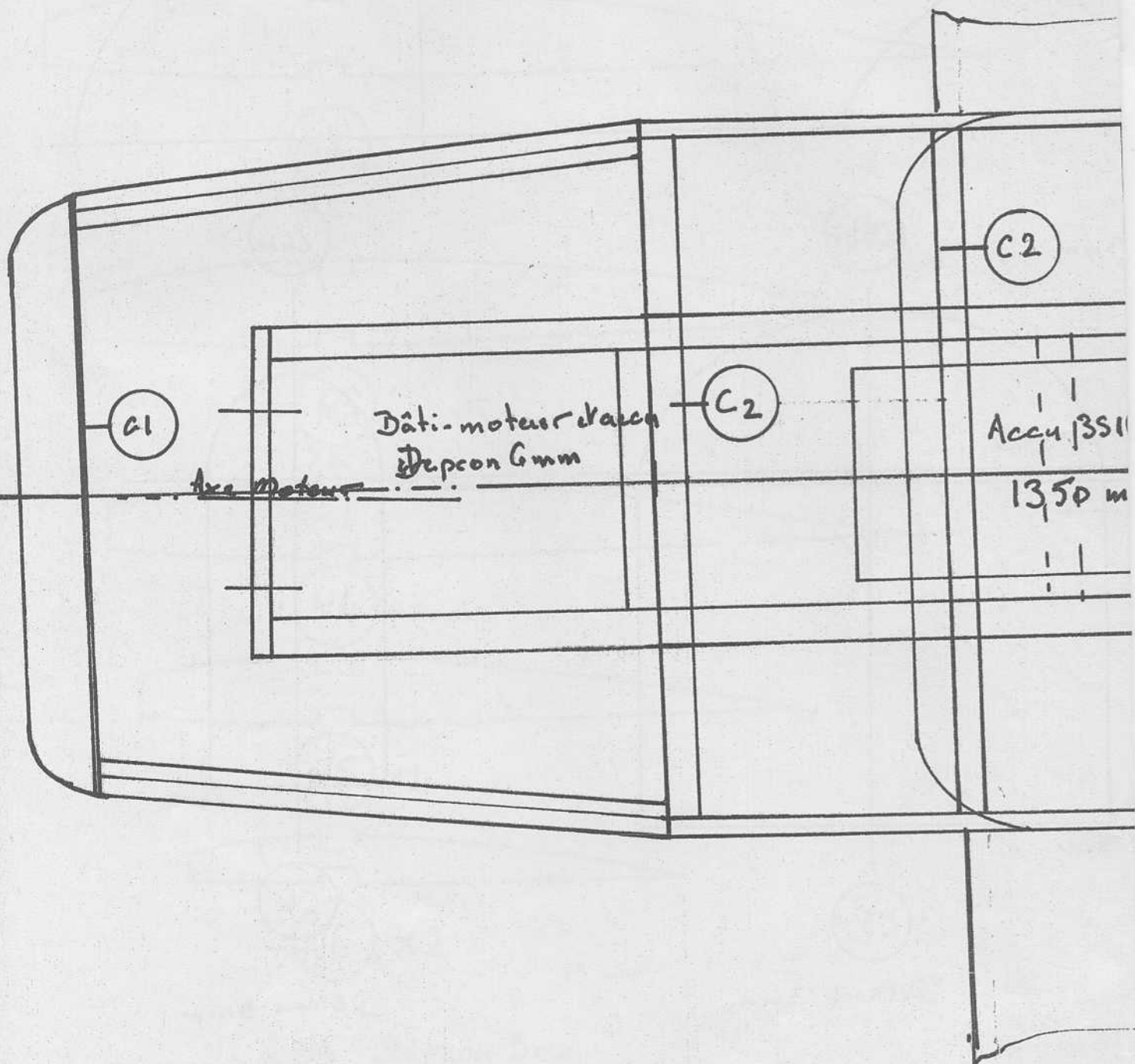
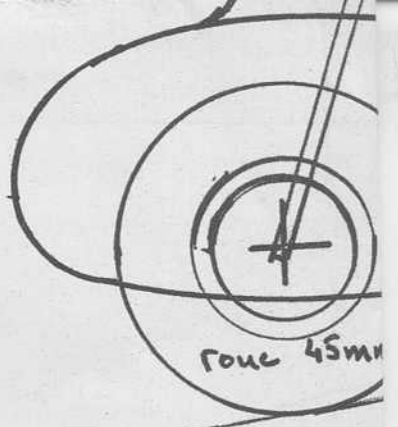
Servo prof.

CTR 15/10+

(C4)

Servo dir.

(7)



(8)

