

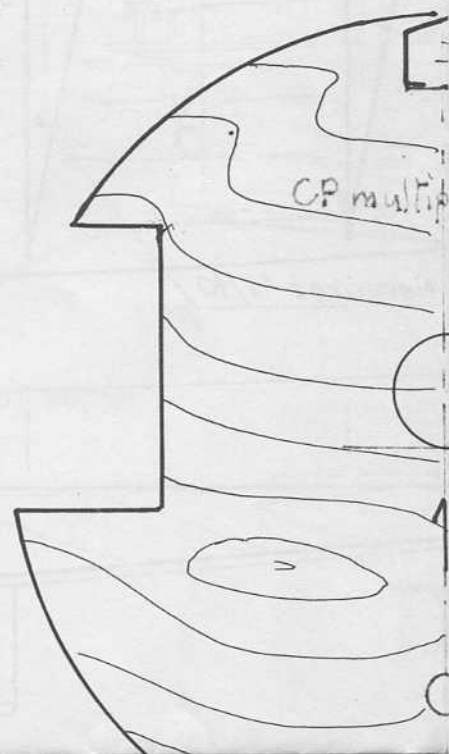
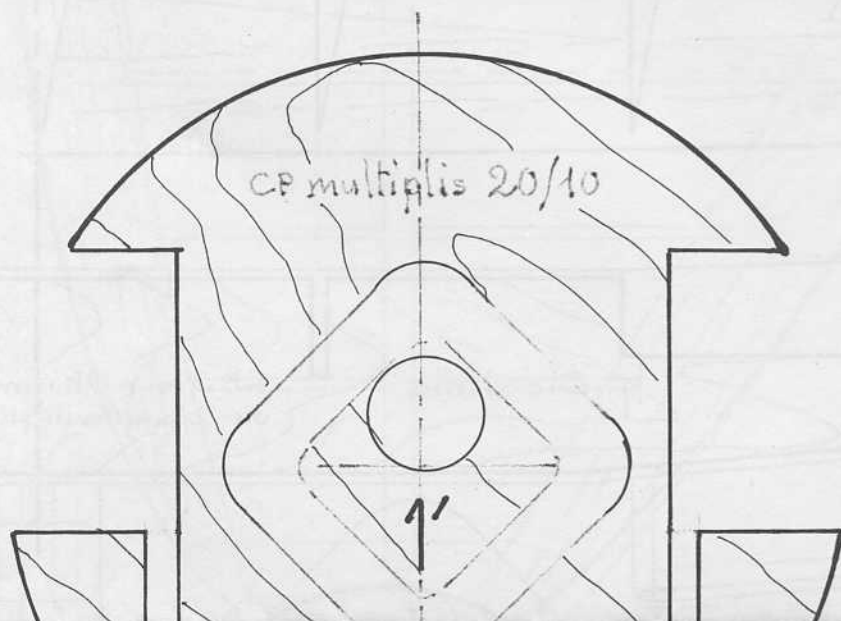
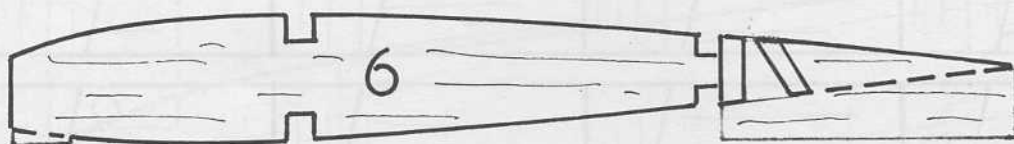
FOCKE-WULF. ^(A)

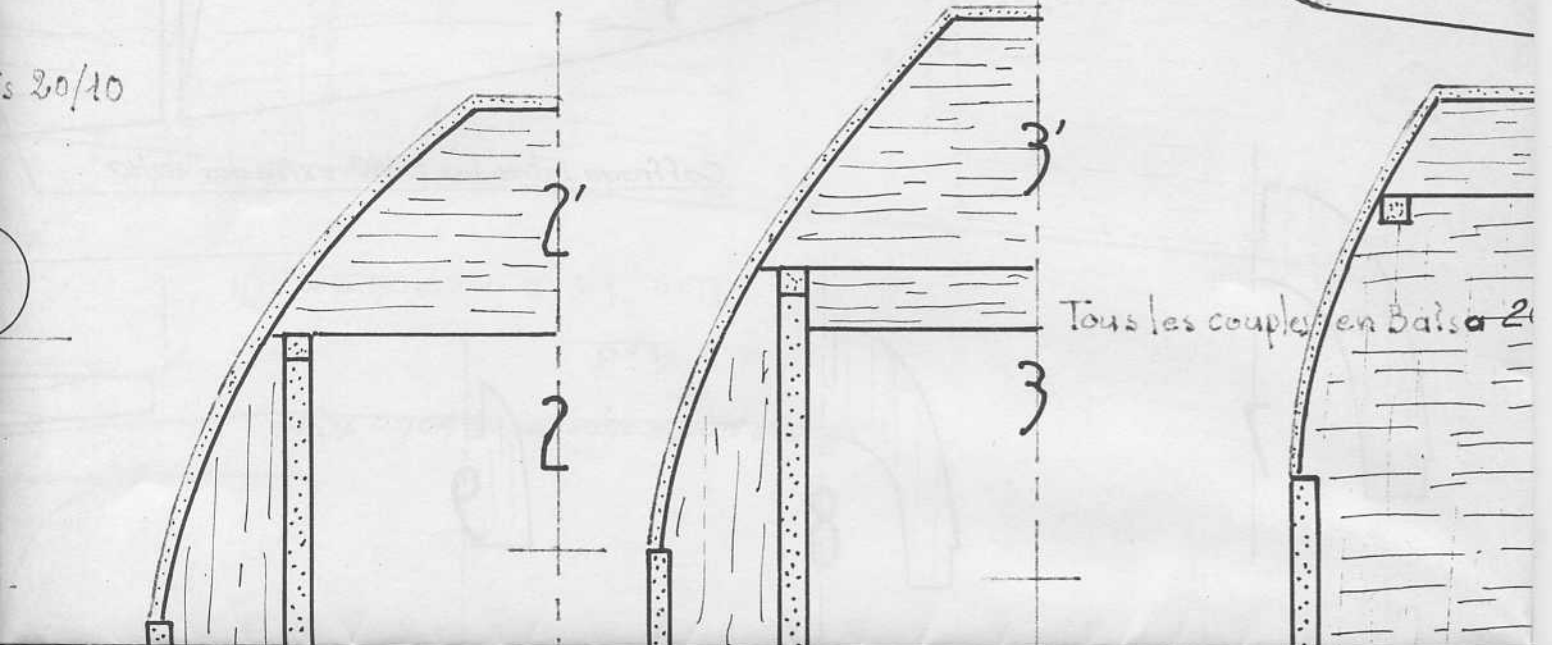
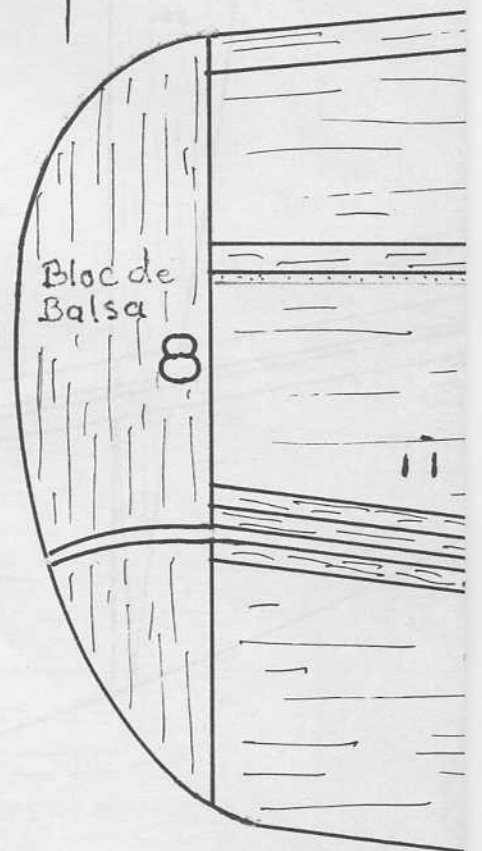
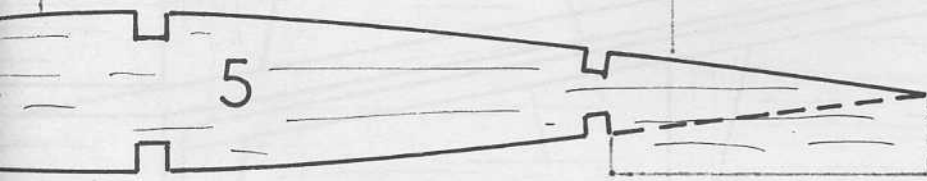
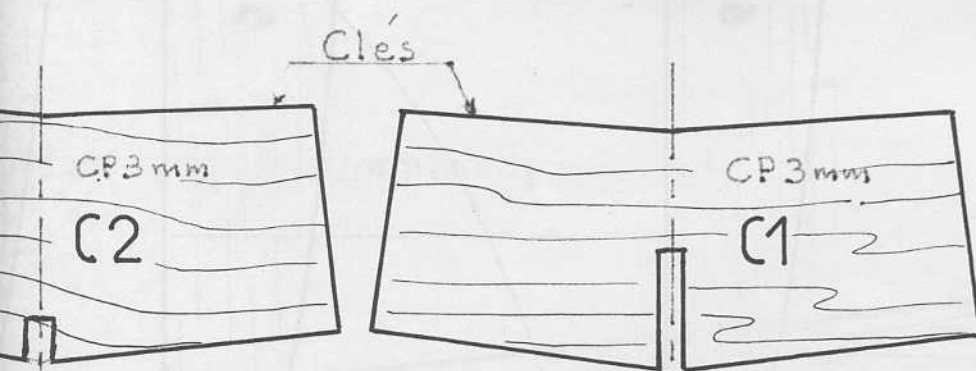
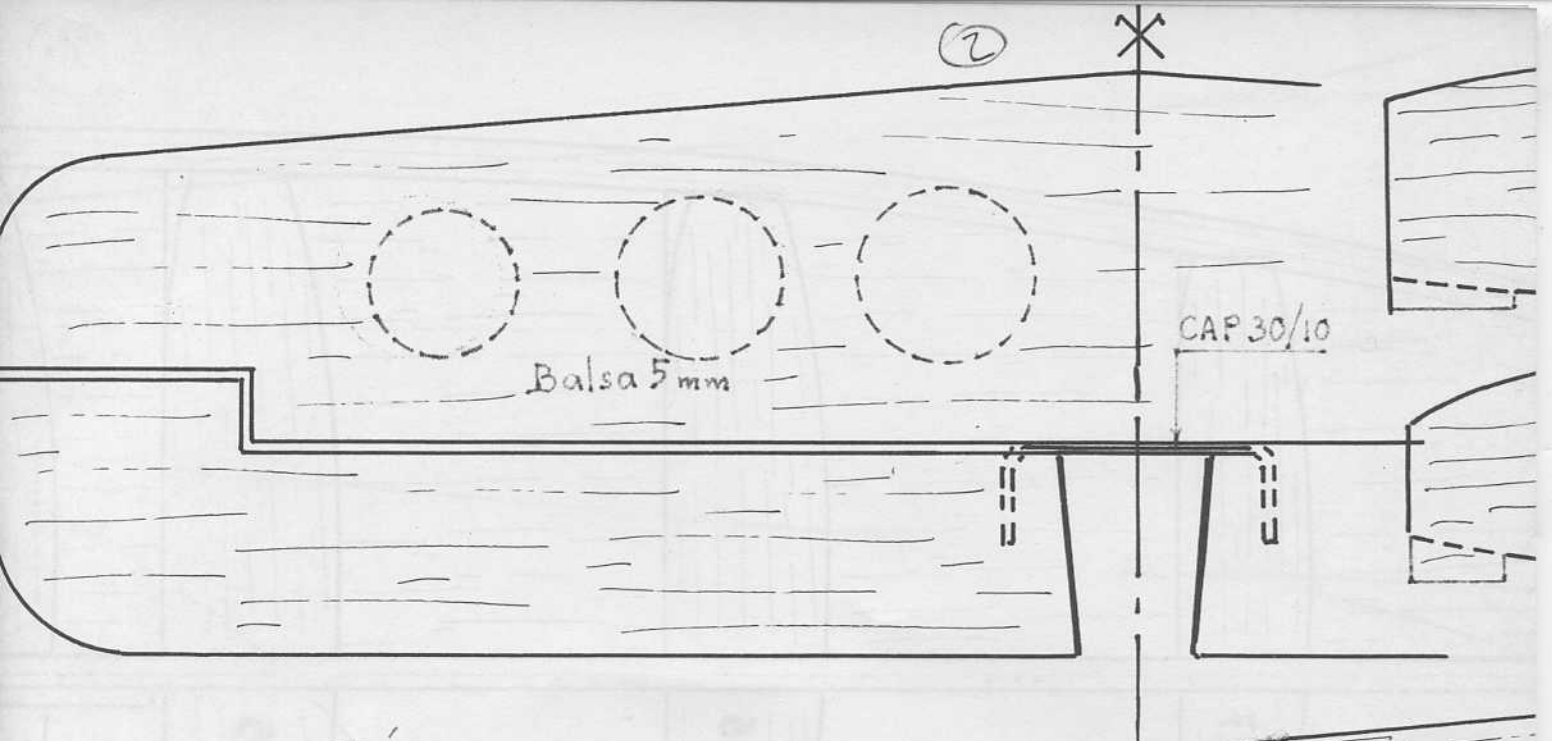
190

SEMI-MAQUETTE ECHELLE : 1/12

C. POITEVIN

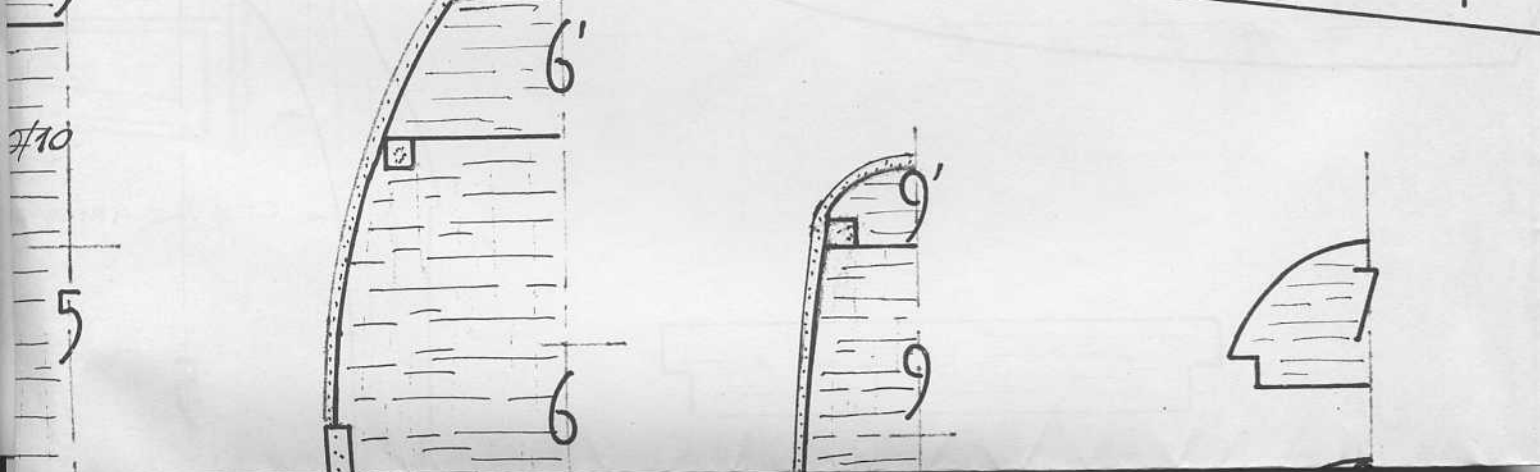
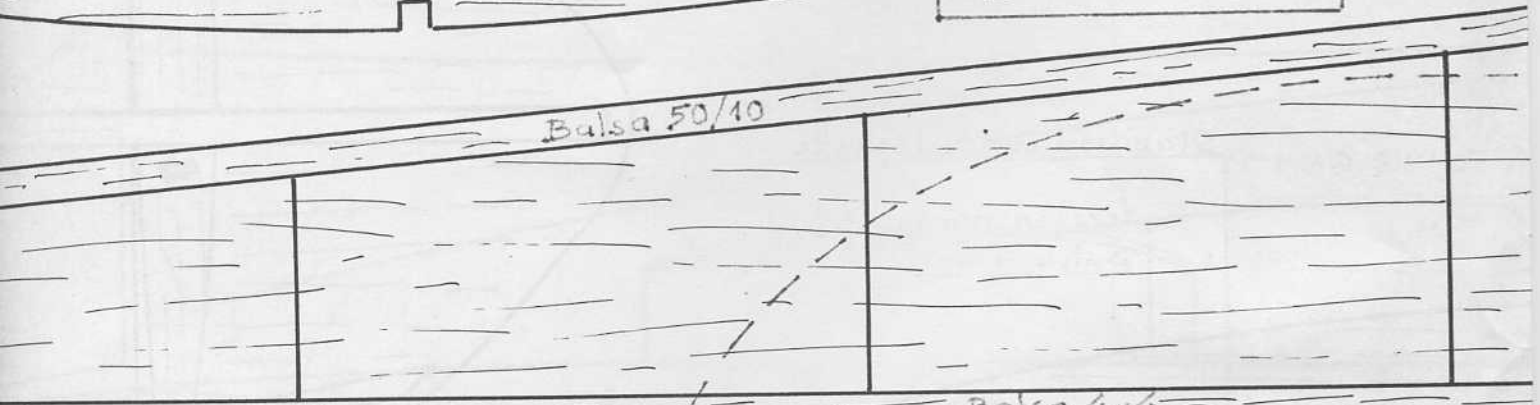
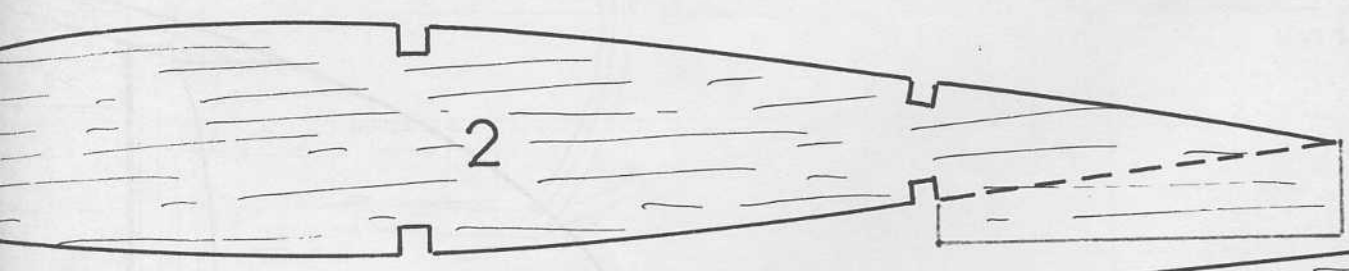
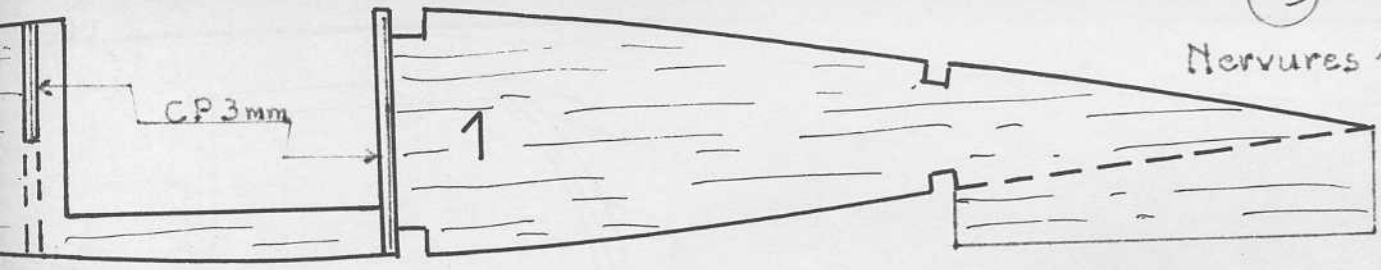
plan gratuit **MRA** n° A.676

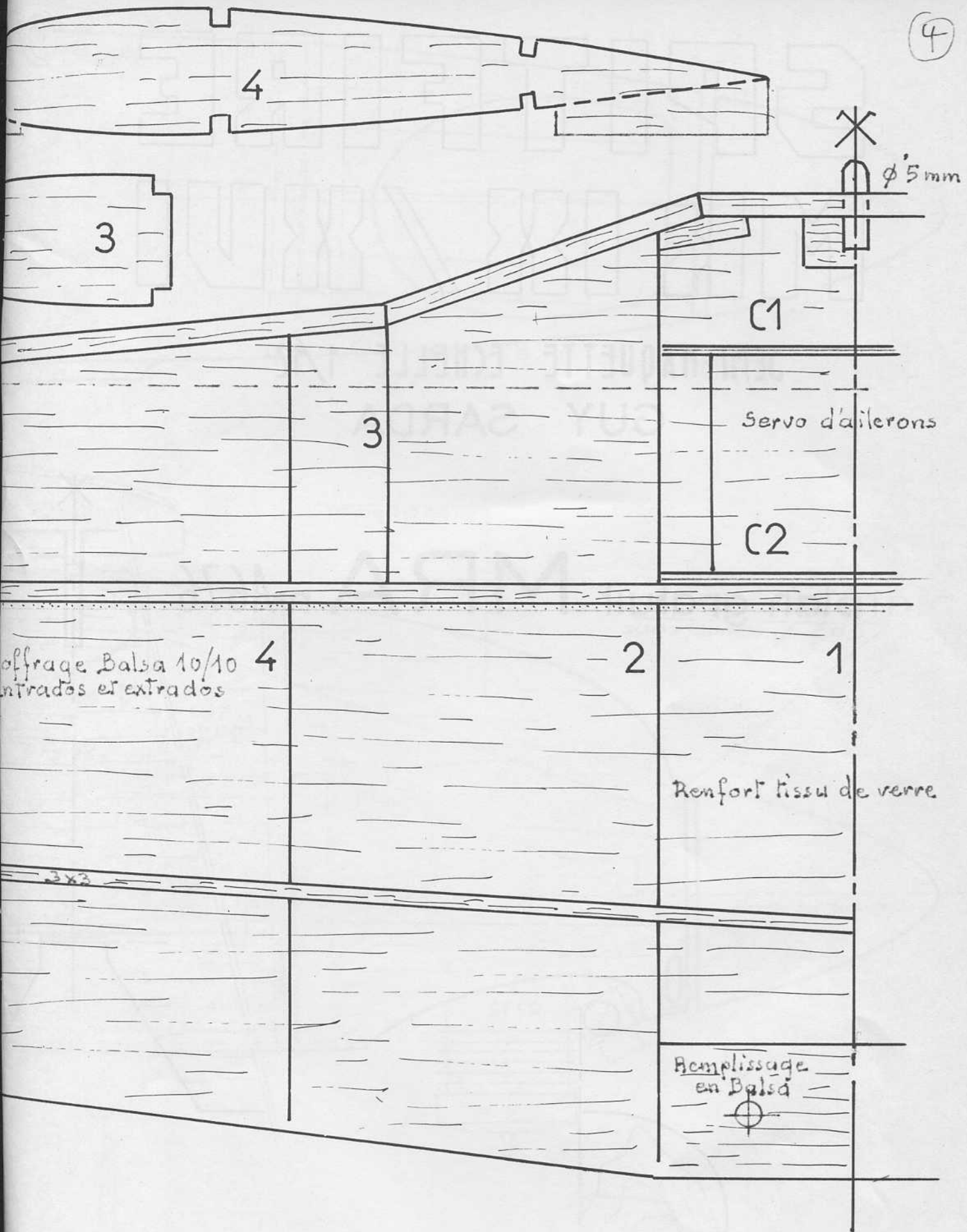




3

Nervures 15/10



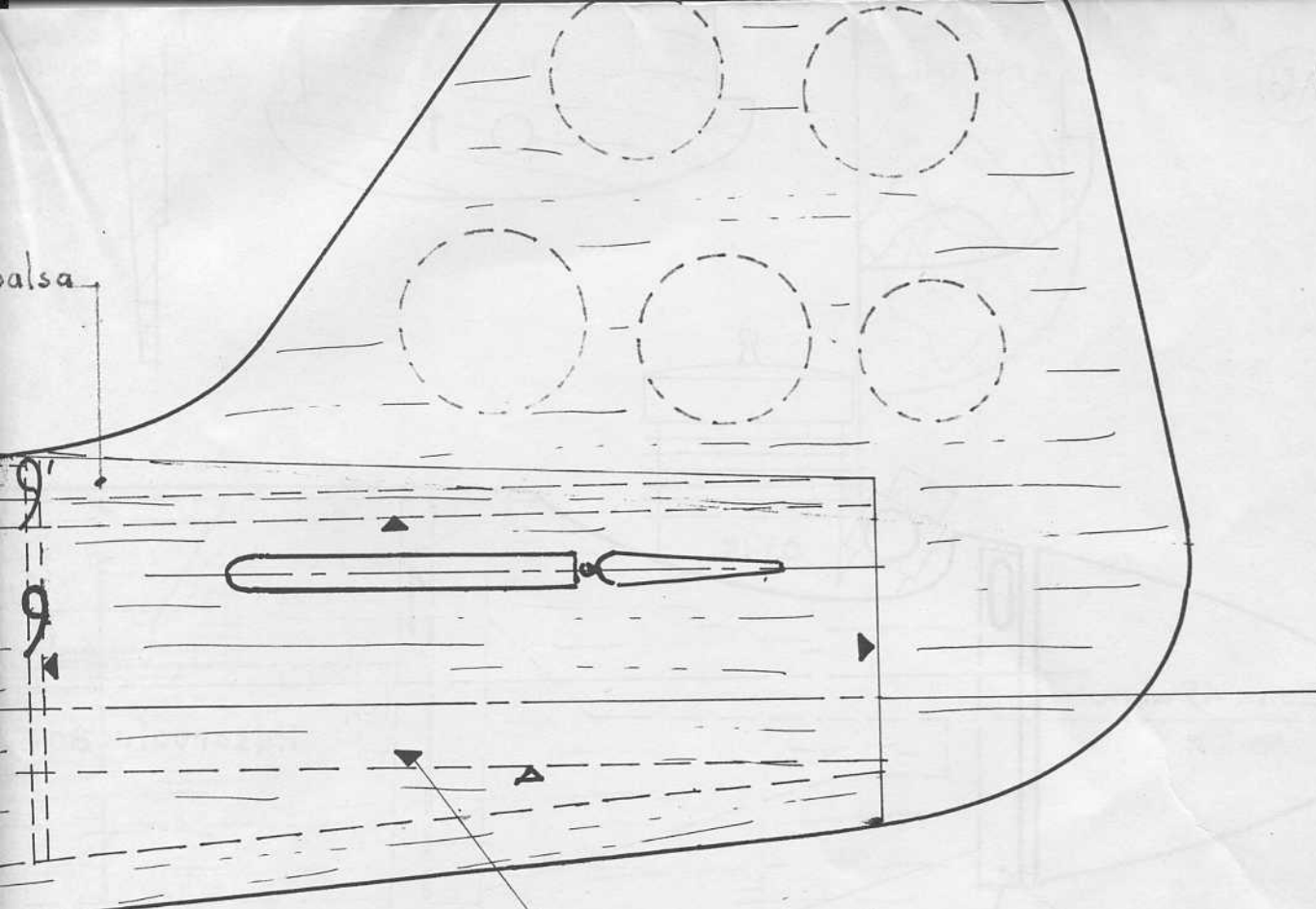


4
 coffrage Balsa 10/10
 entrados et extradós

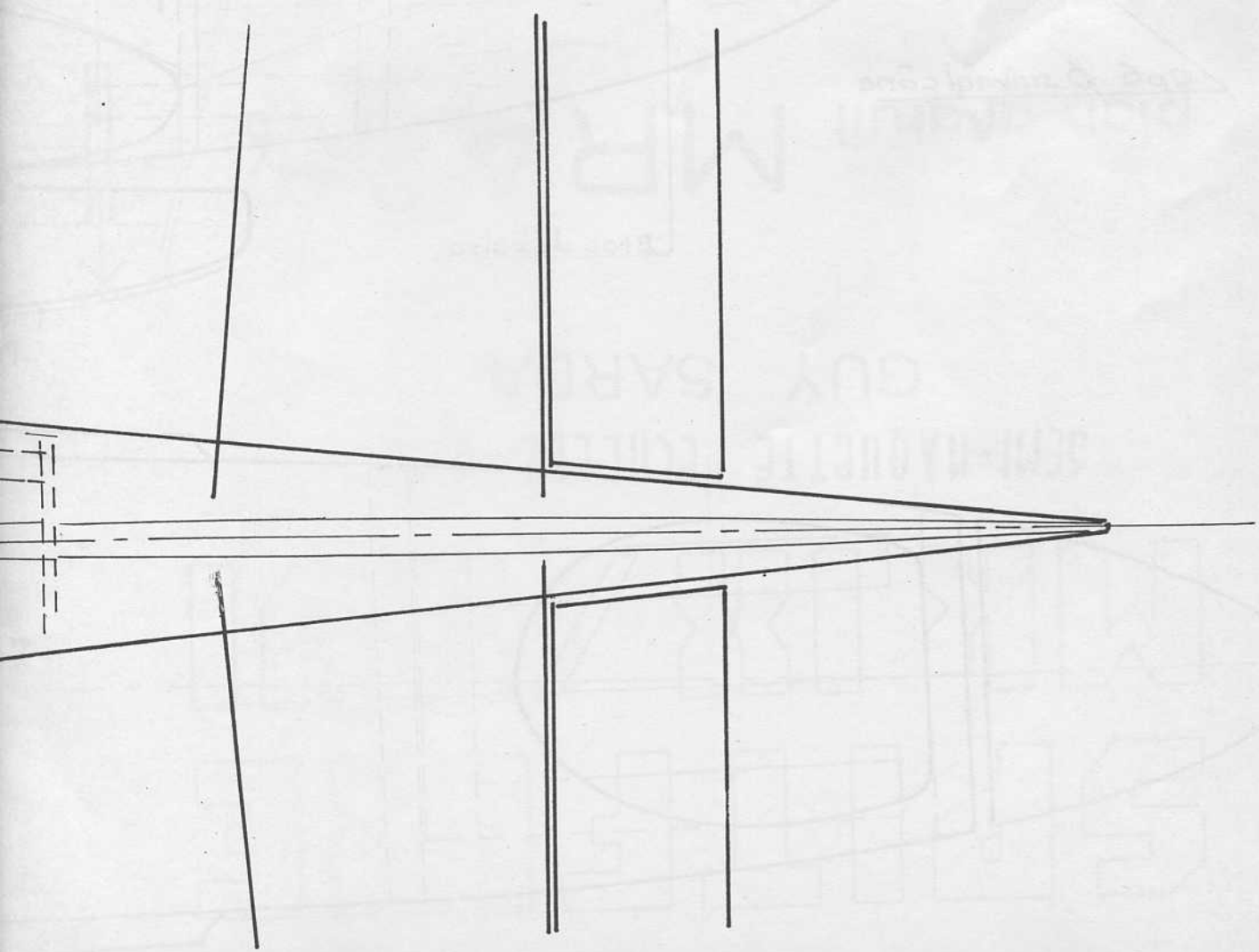
1
 Renfort tissu de verre

Remplissage
 en Balsa





Renfort balsa 30/10



Remplissage

6

6'

6

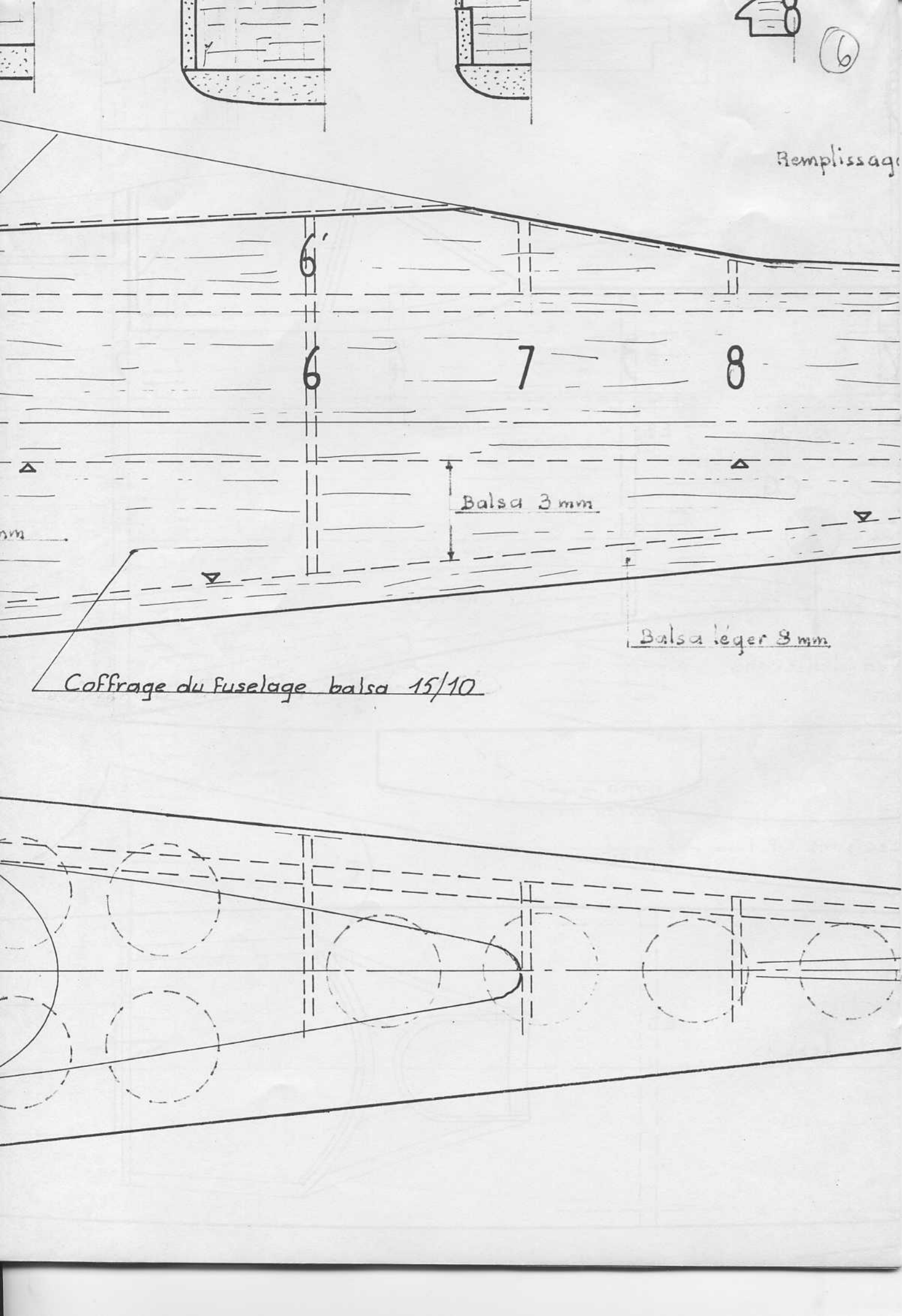
7

8

Balsa 3 mm

Balsa léger 3 mm

Coffrage du fuselage balsa 15/10



CP 4/10

CP 4/10

7

eur

Accu

Servos

Inter

voic



Balsa 4 mm

Flanc interne balsa 40/10

Flanc externe balsa 30/10

CP 3

e de dessus

