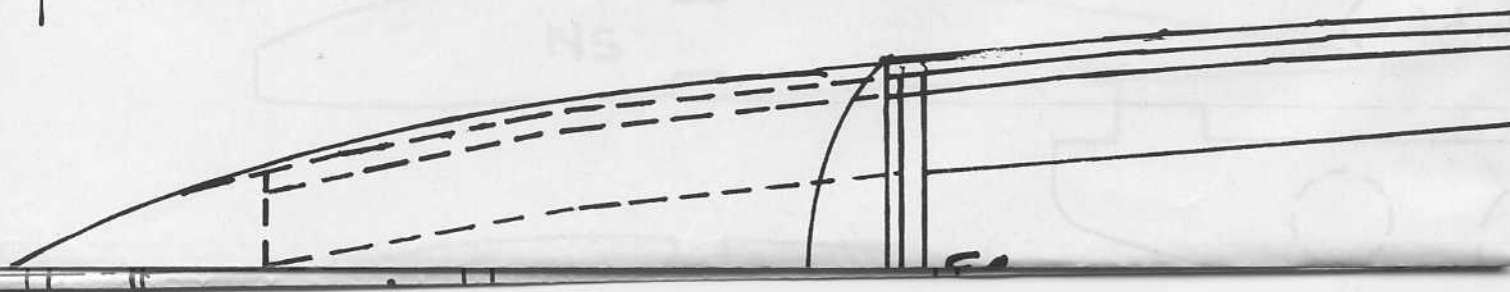
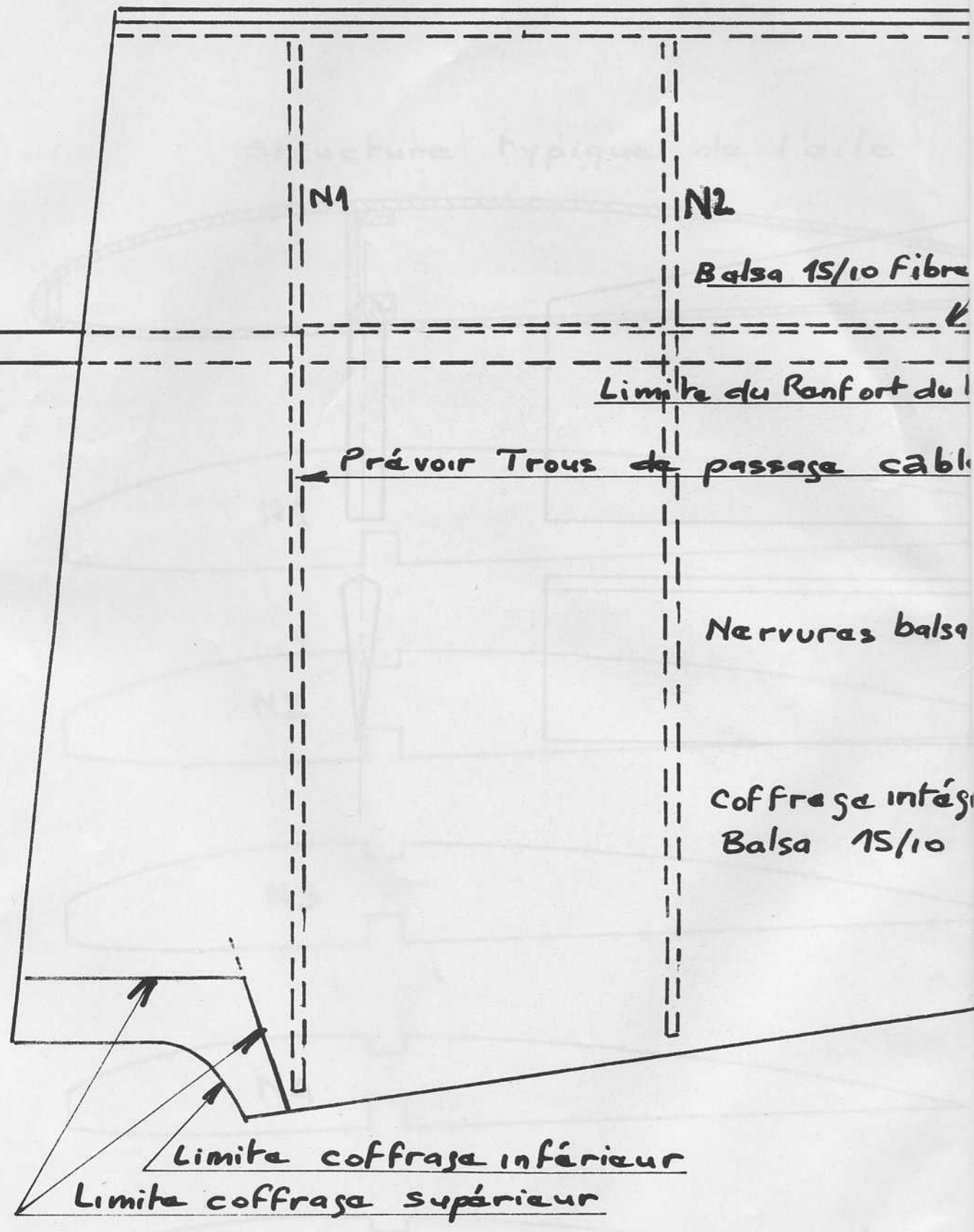


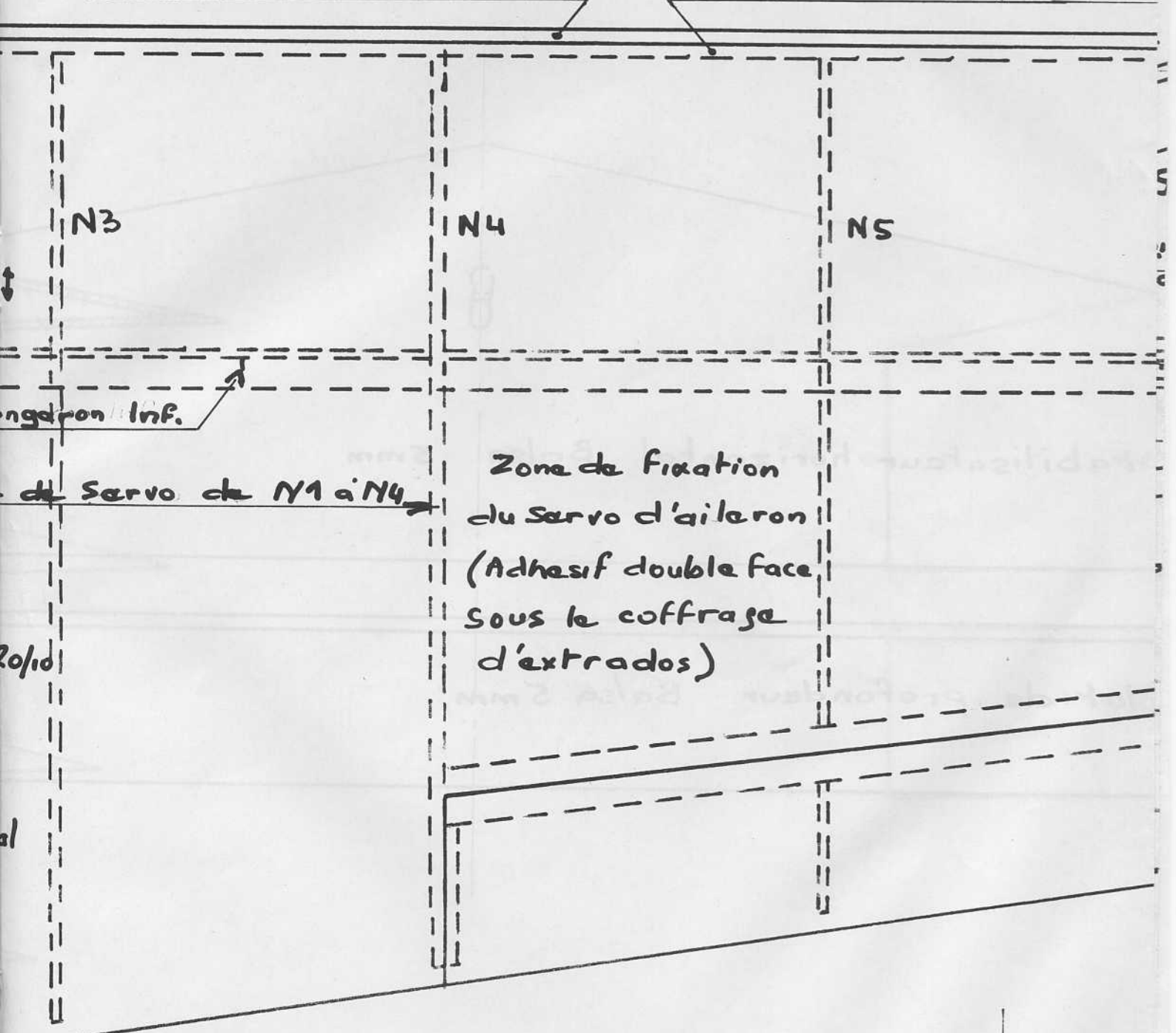
SI 2 (1)

Axe du fuselage



Bord d'attaque Balsa 30/10

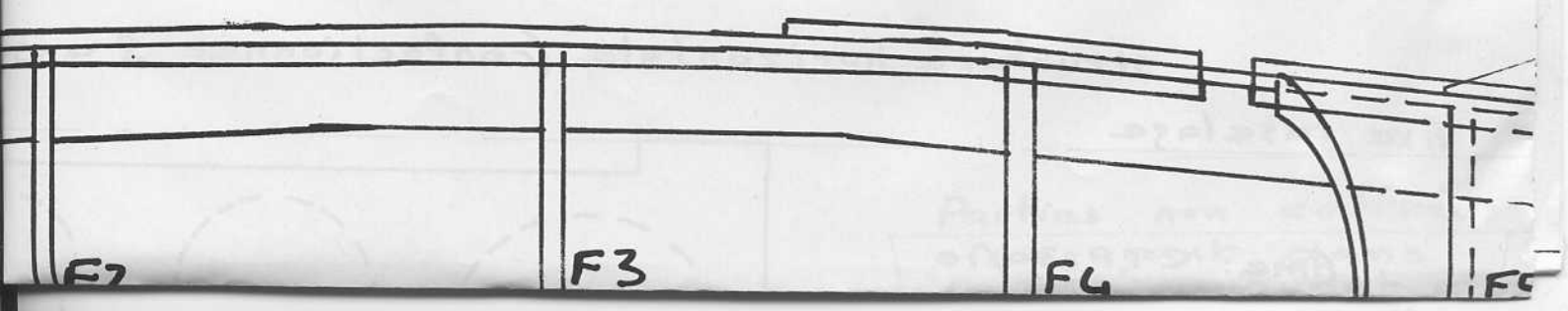
Faux Bord d'attaque Balsa



Zone de fixation
 du servo d'aileron
 (Adhésif double face
 sous le coffrage
 d'extrados)

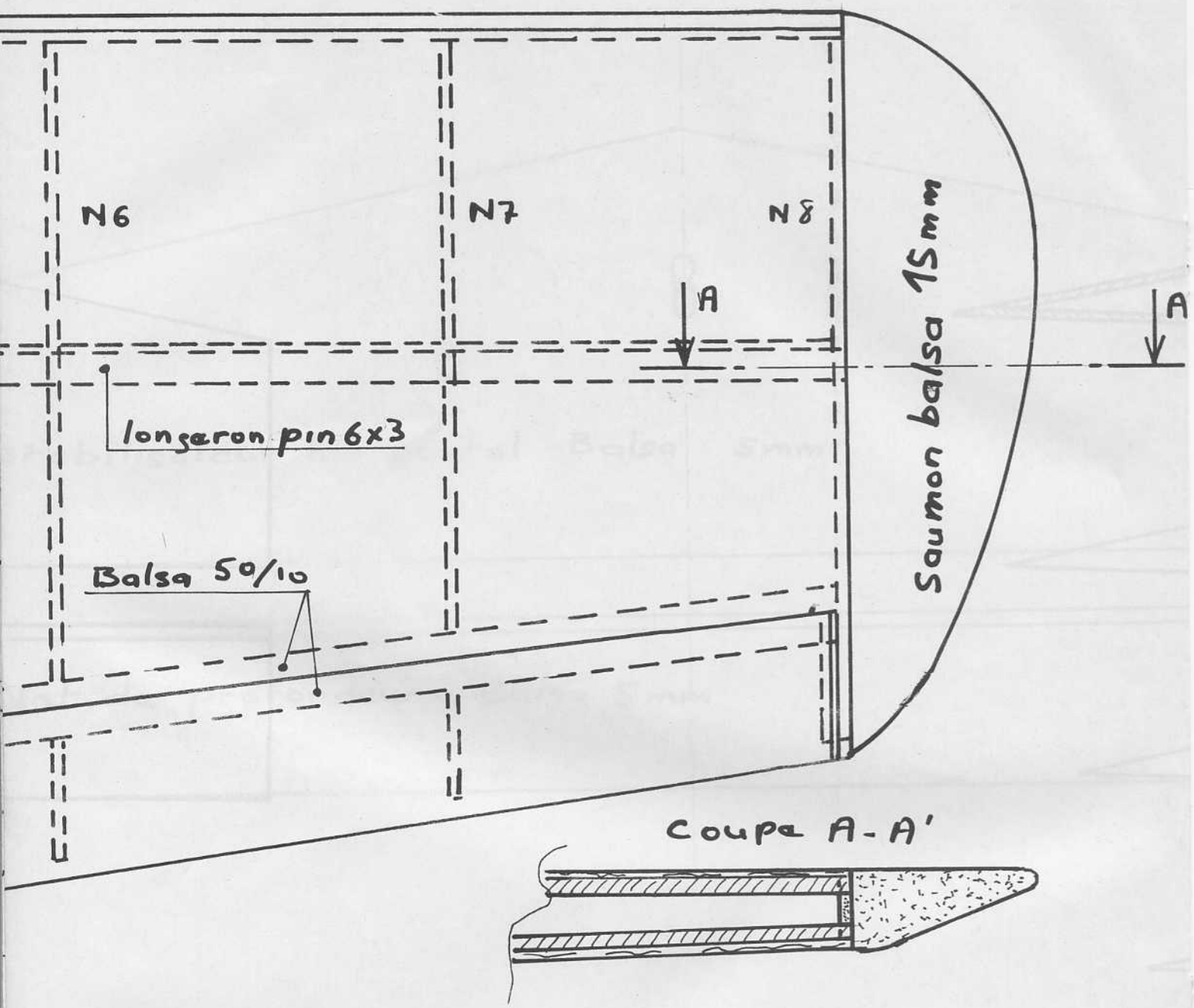
de Servo de N1 à N4

Clé d'aile CTP 6 mm Mu

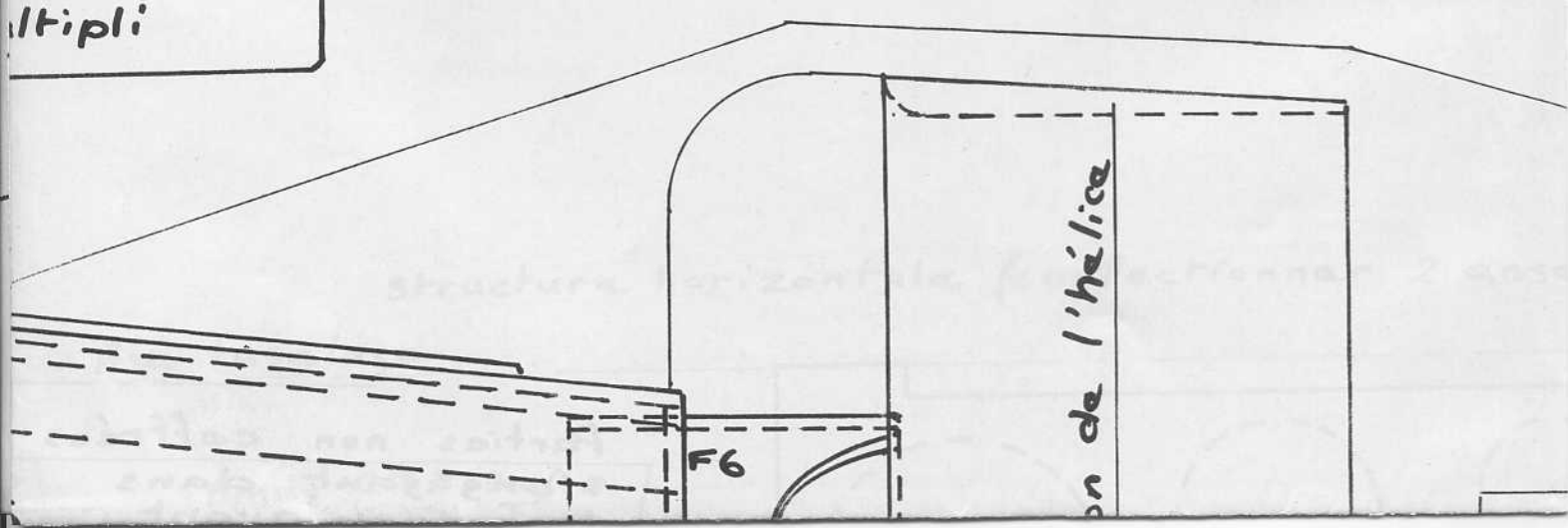


3

20/10



multipli

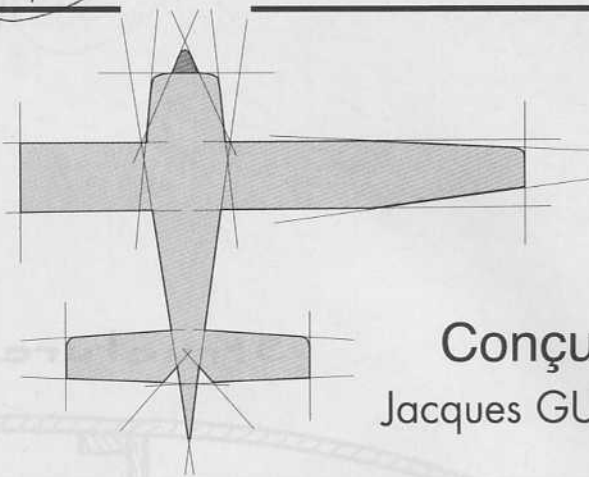


4

PLAN *encarté*

modèle
magazine

Espace Clichy "Immeuble AGENA" - 12 rue Mozart
92587 CLICHY cedex - Tél : 01.41.40.32.32

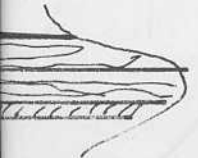


Conçu par
Jacques GUERARD

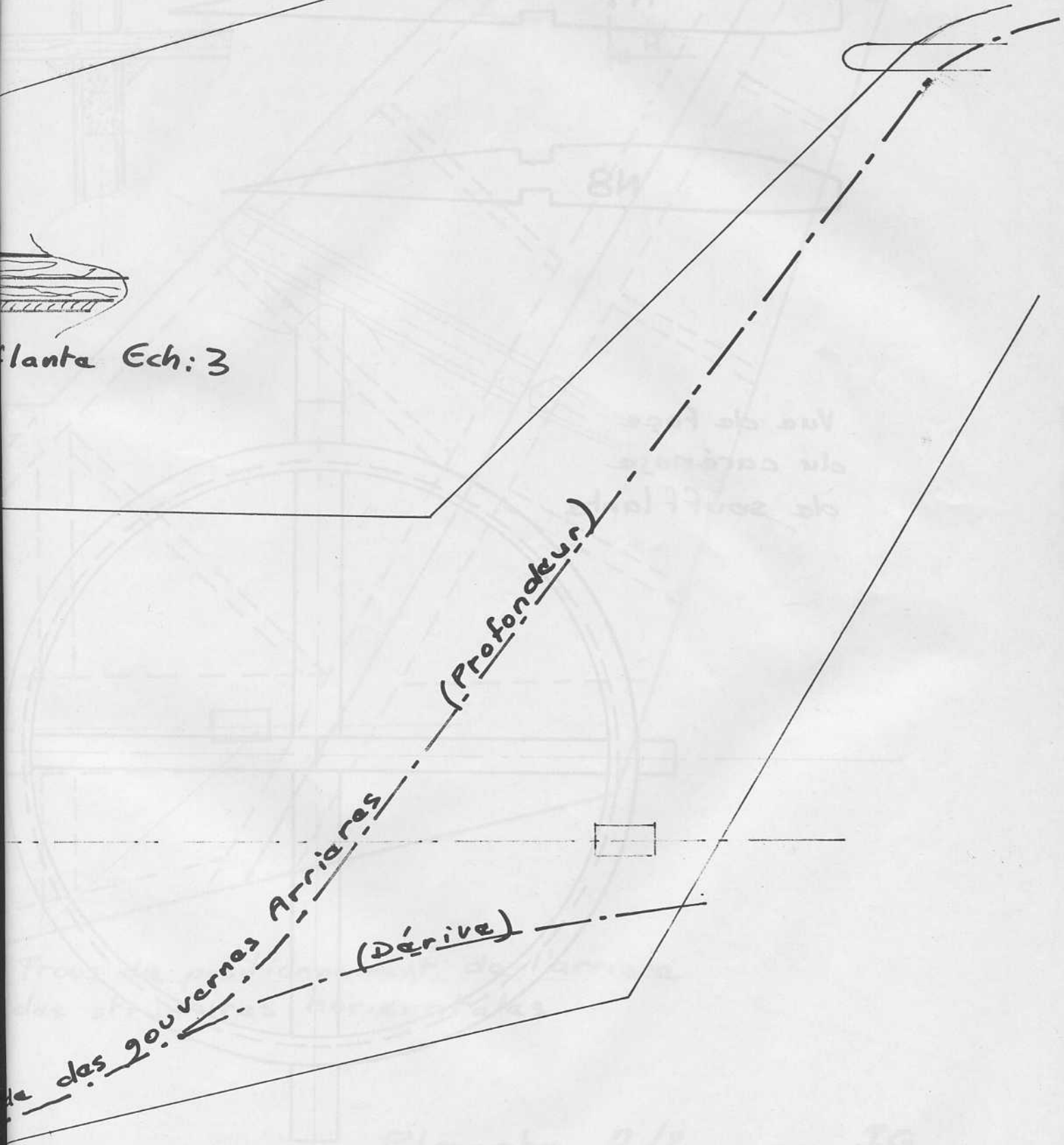
FANTRAINER

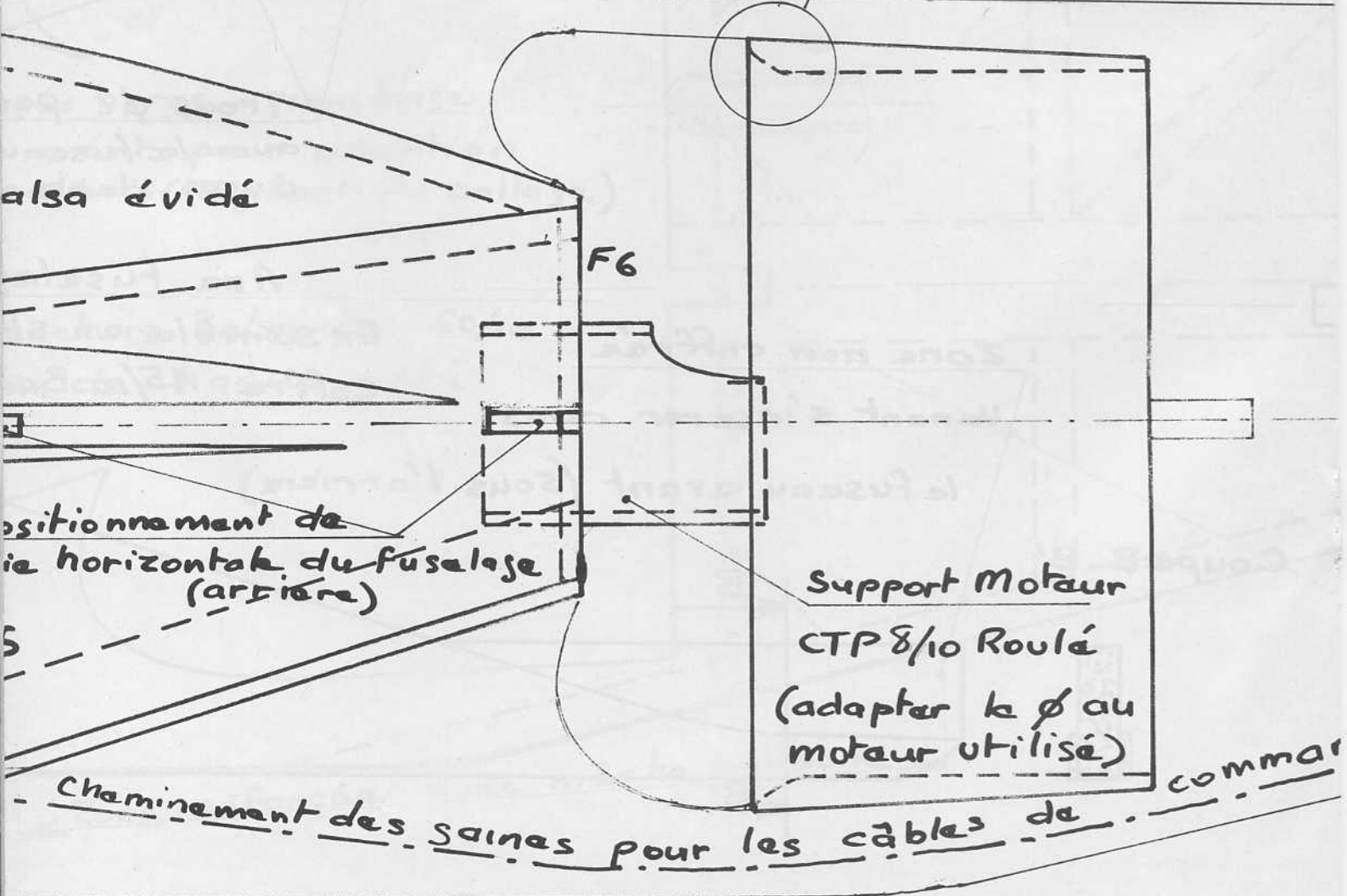
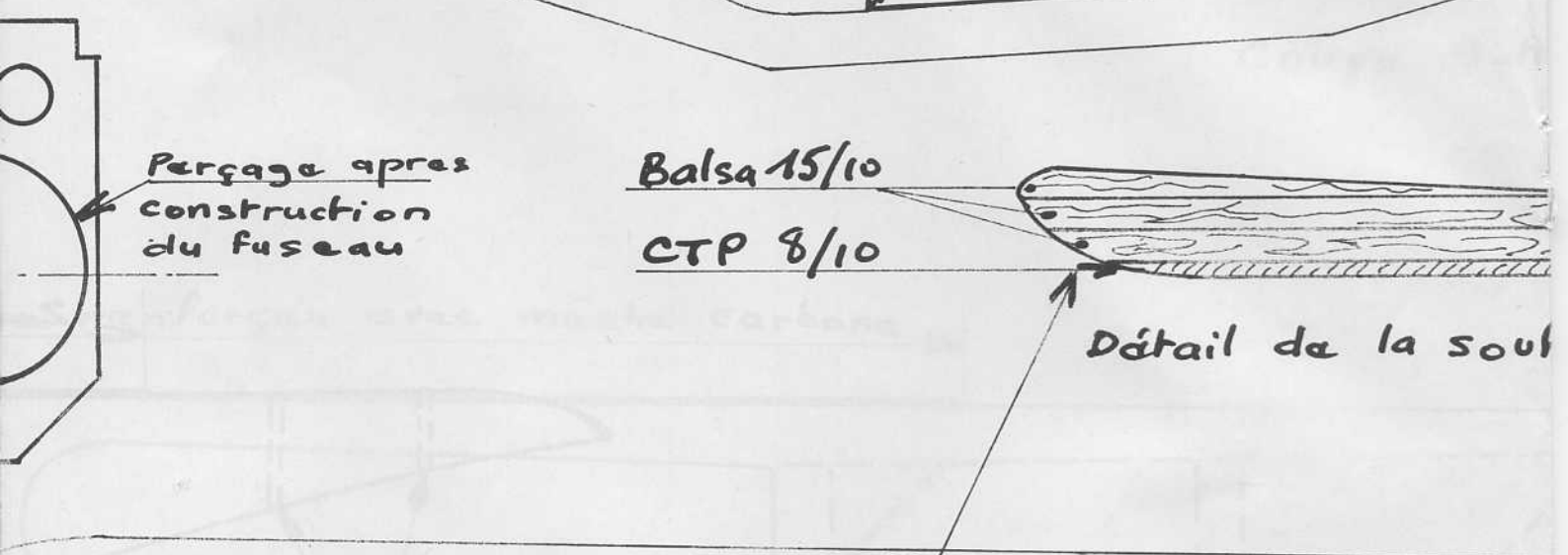
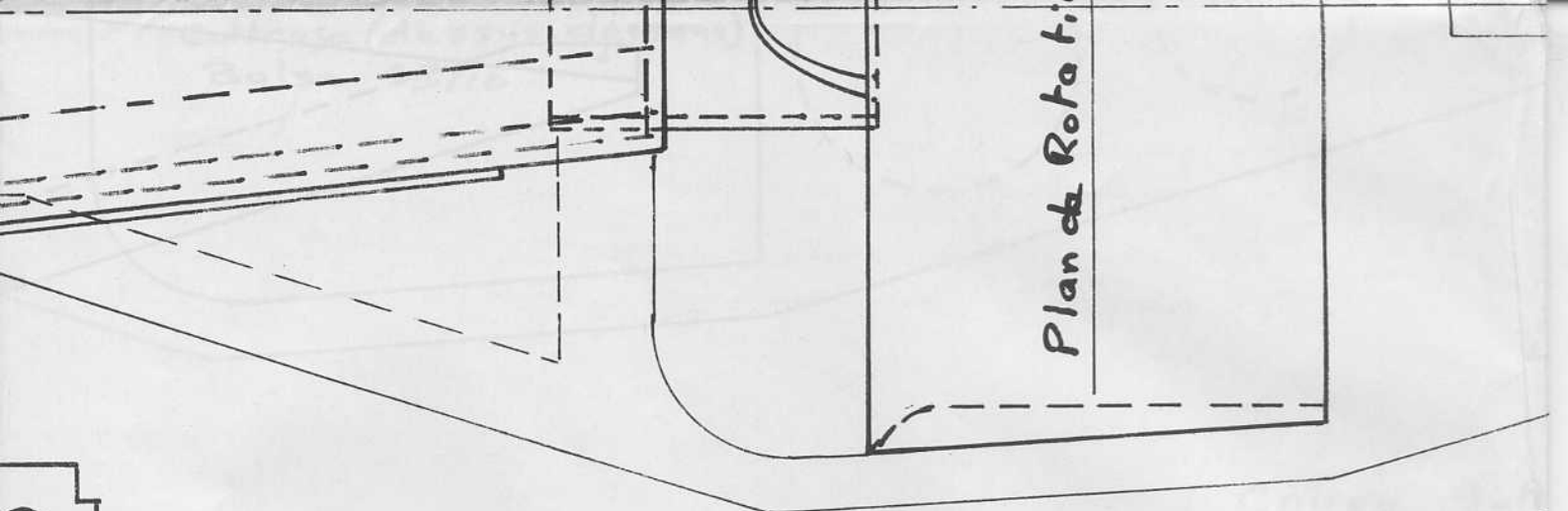
RÉF. 602E

Les plans détaillés de l'arrière du fuselage sont sur la planche 2/2

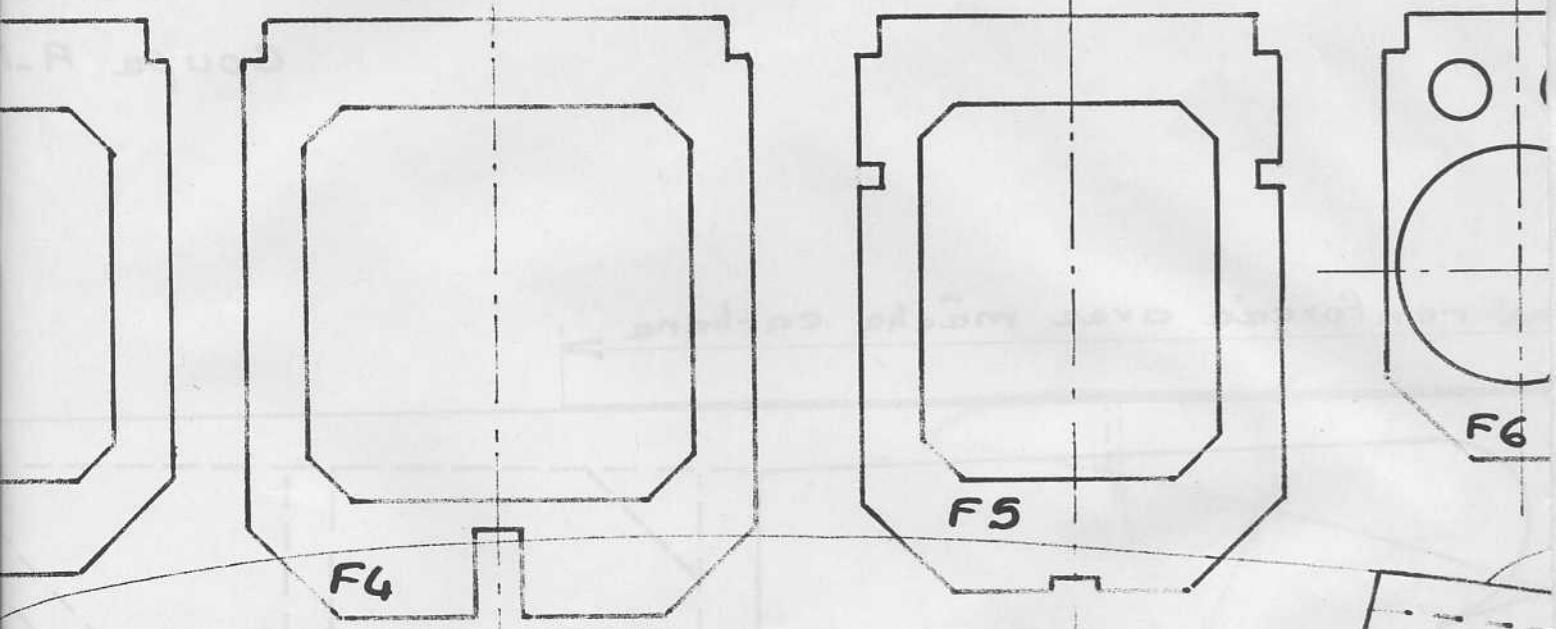


Planta Ech: 3





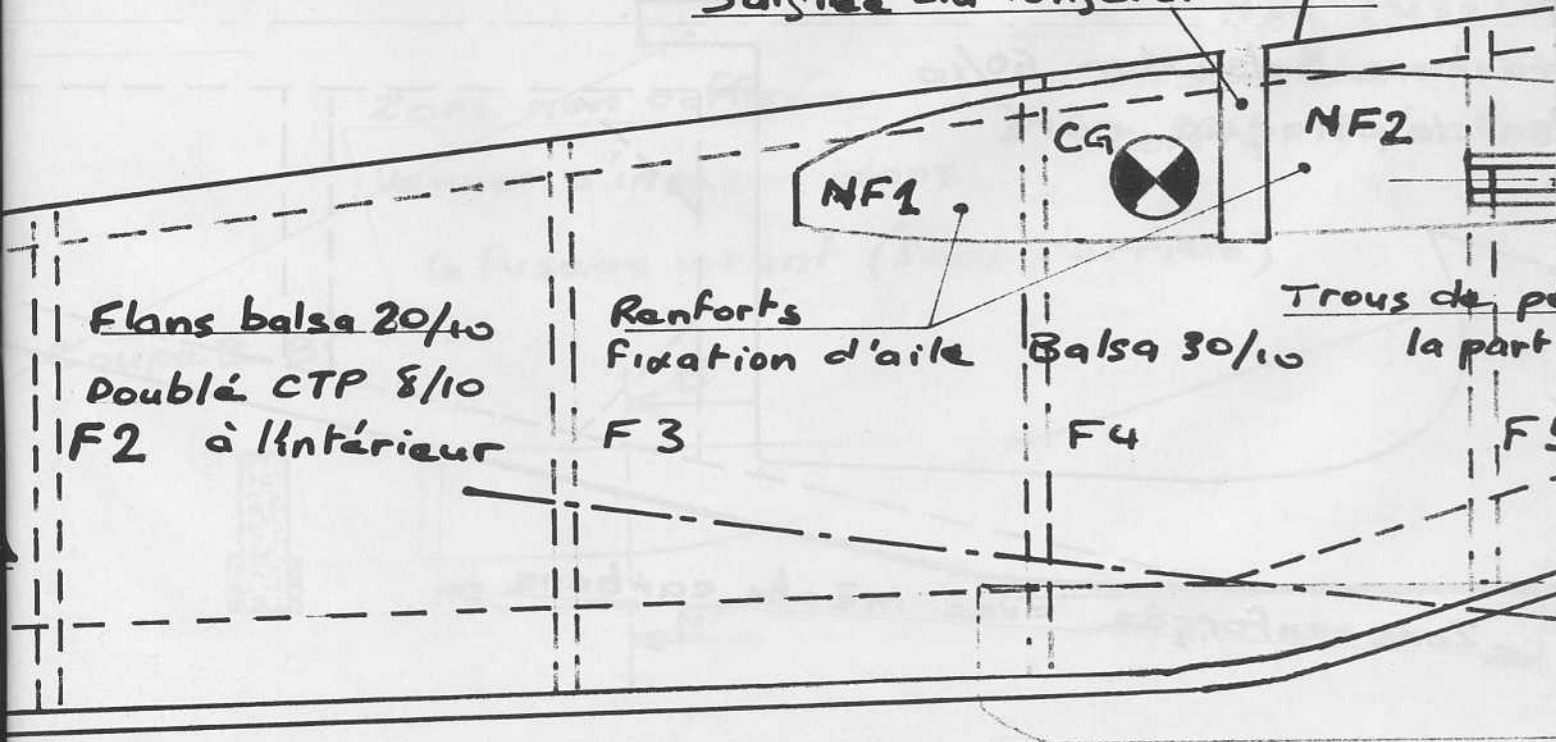
TP 30/10 ordinaire



Verrière Thermoformée

Saignée du longeron d'aile

Bloc b.



Flans balsa 20/10
Doublé CTP 8/10
F2 à l'intérieur

Renforts
Fixation d'aile
F3

Balsa 30/10
F4

Trous de p...
la part

