

F1 à 4 : Balsa 20/10
F5 et 6 : Balsa 15/10

verrière thermoformée
sur bloc balsa

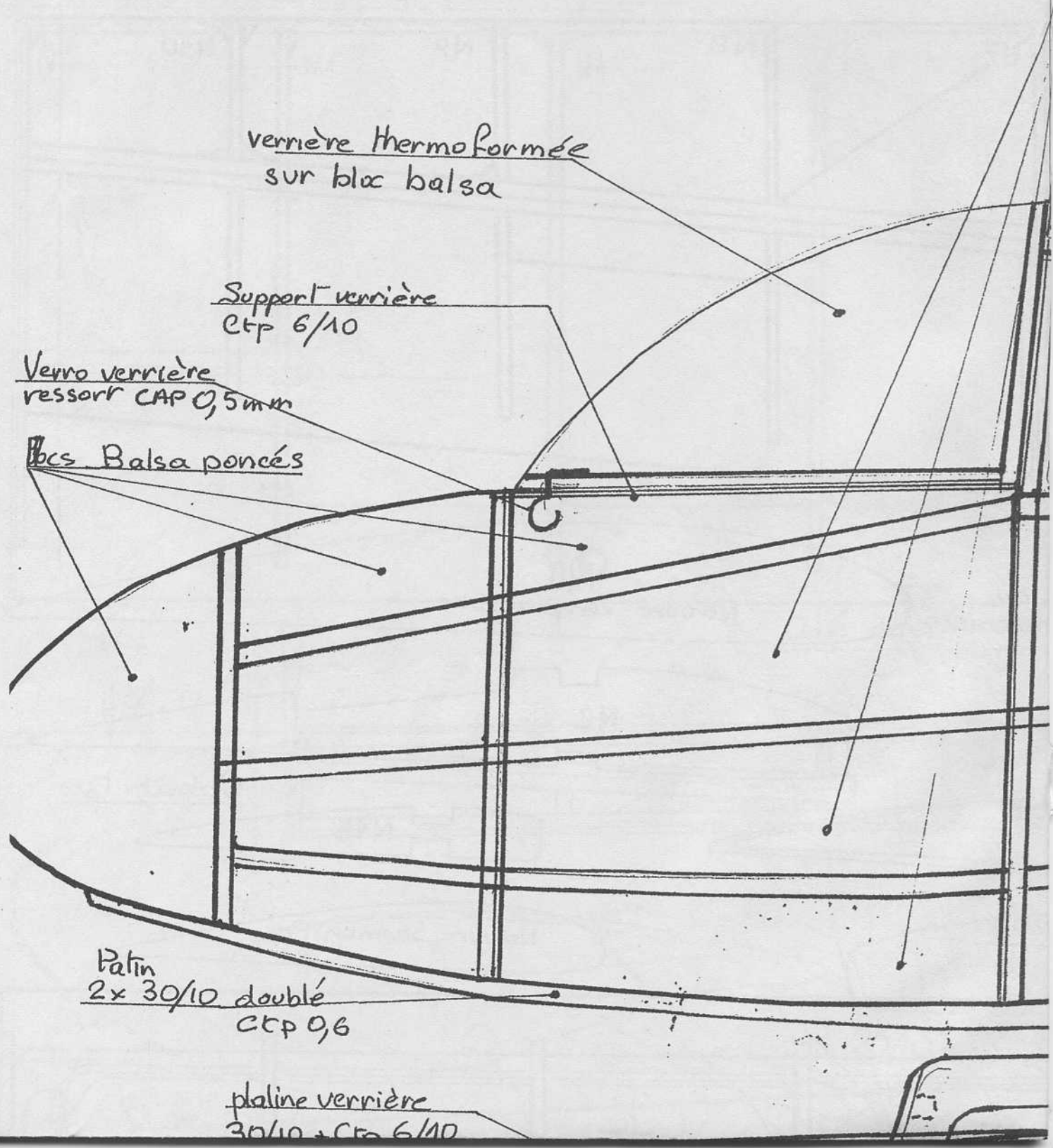
Support verrière
CTP 6/10

Verre verrière
ressort CAP 0,5mm

Becs Balsa poncés

Patin
2x 30/10 doublé
CTP 0,6

platine verrière
30/10 + CTP 6/10



Centrage
51 mm

Planches 20/10

NACA 4412

Ecrou à griffes M4

Vis Nylon $\phi 4$

doublur
sur foc
fil vert

Servo 9g

F1

F2

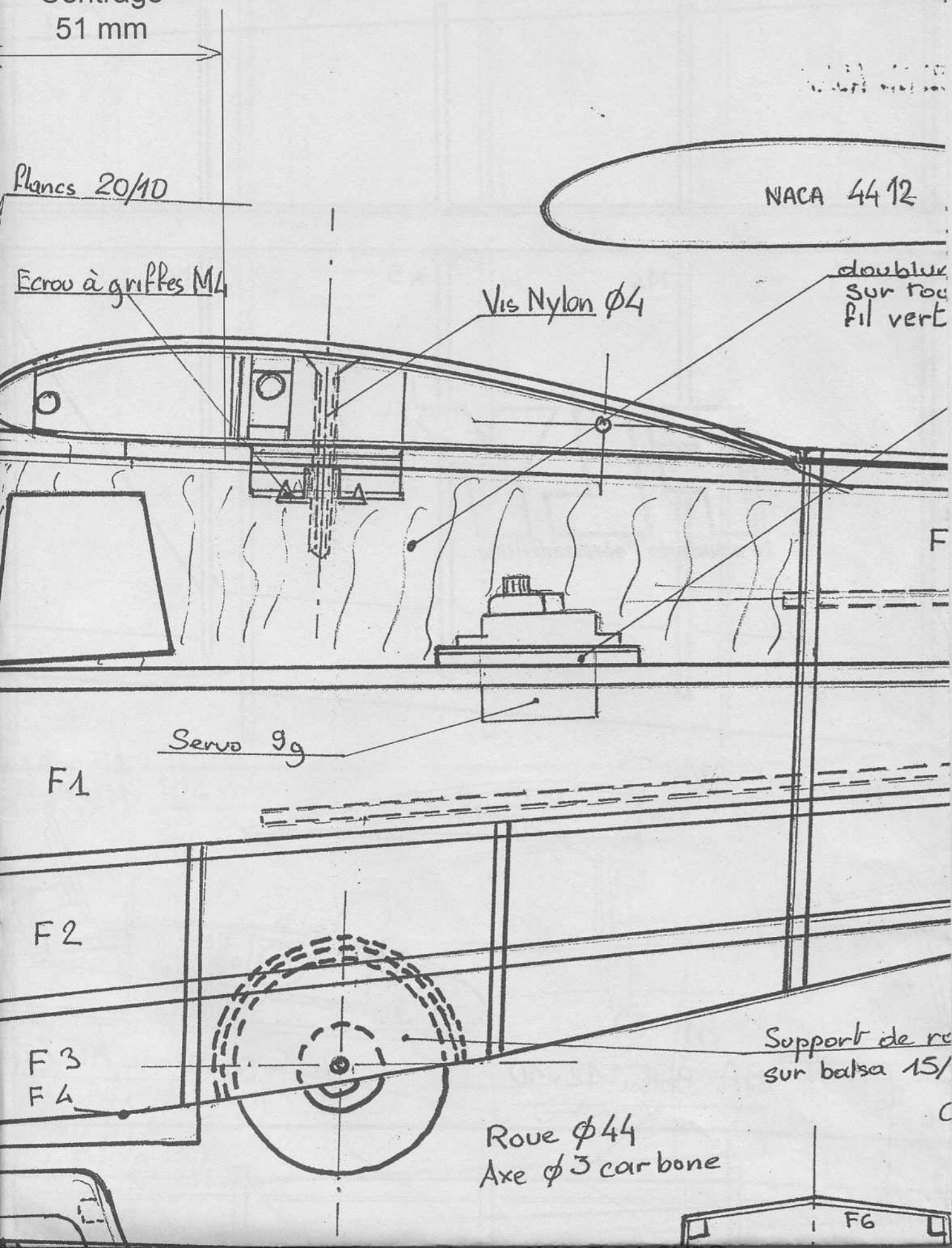
F3

F4

Support de ro
sur balsa 15/

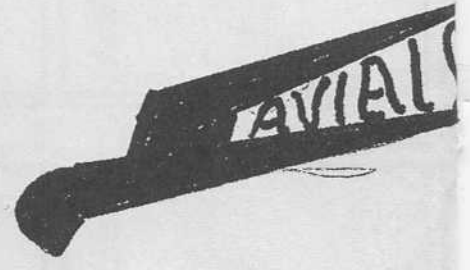
Roue $\phi 44$
Axe $\phi 3$ carbone

F6



Baquette pin 3x3

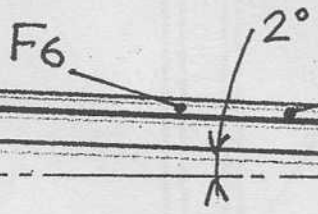
Baquettes Balsa 4x4



Fauconnet

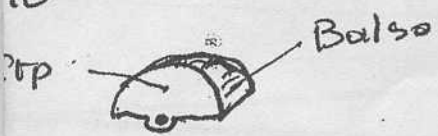
Planc 20/10
te la cabane
ical

platine servo 30/10
doublée Ctp 6/10



5

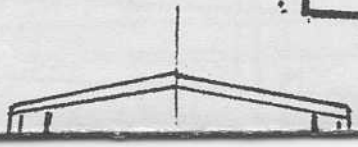
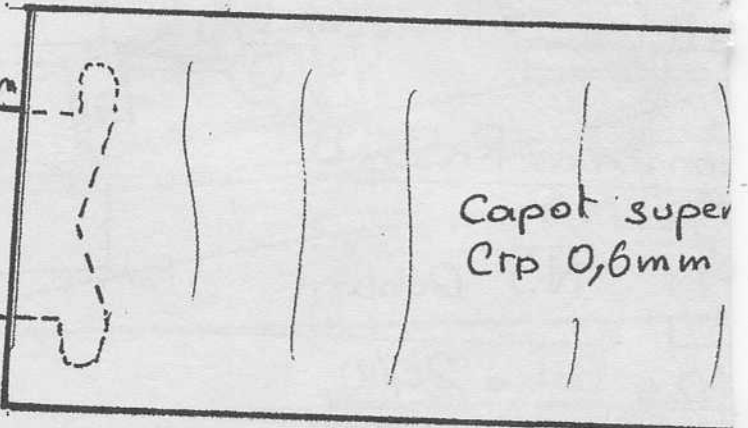
ve 2x Ctp 6/10
10



Cap 0,5mm

Crochets
de capot

Capot super
Ctp 0,6mm



Baquettes 40/10

Derive co Plée 10/10
debord 1mm (arrondi)

A

A60

Planches 15/10

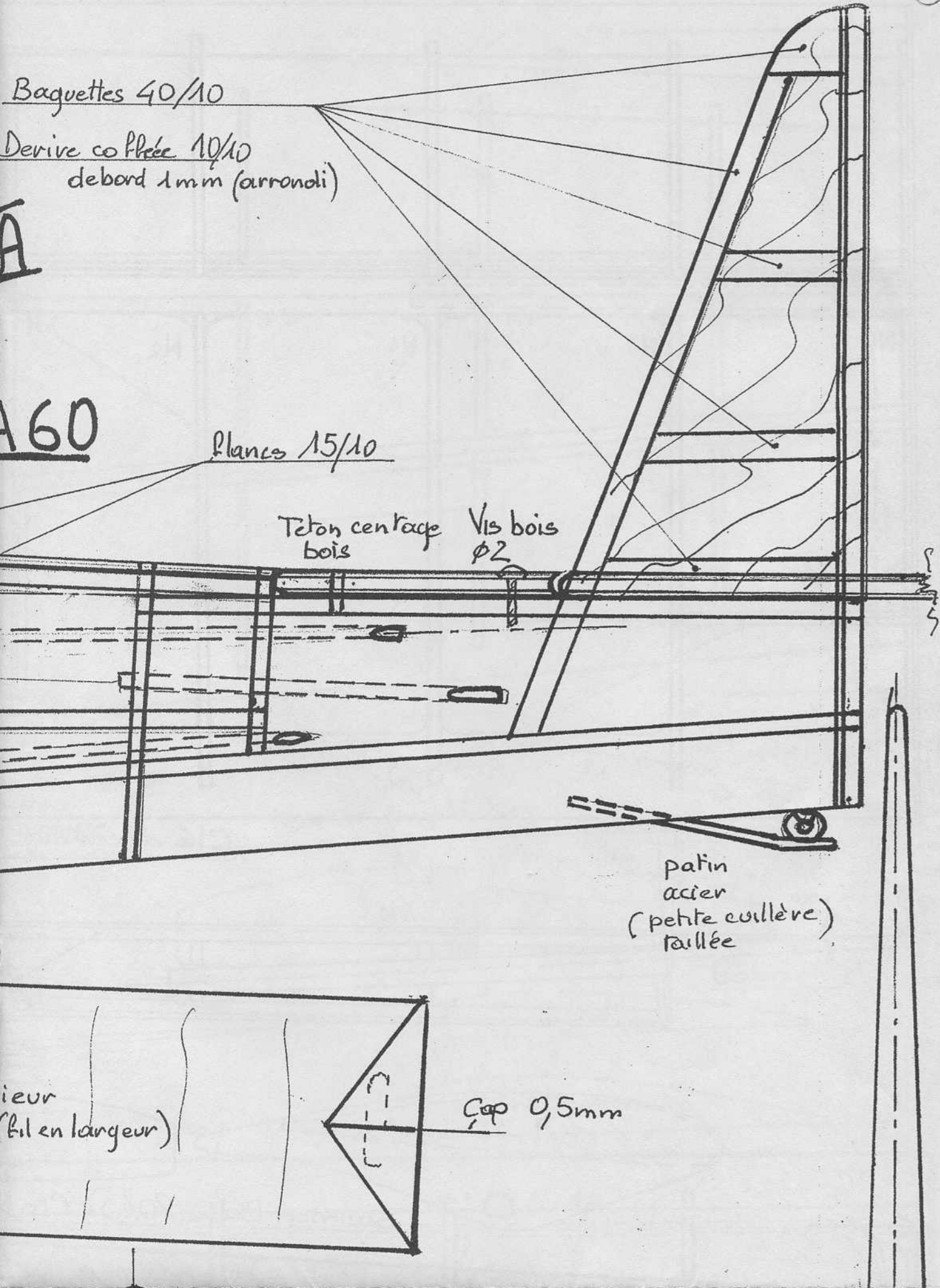
Teton centrage
bois

Vis bois
Ø2

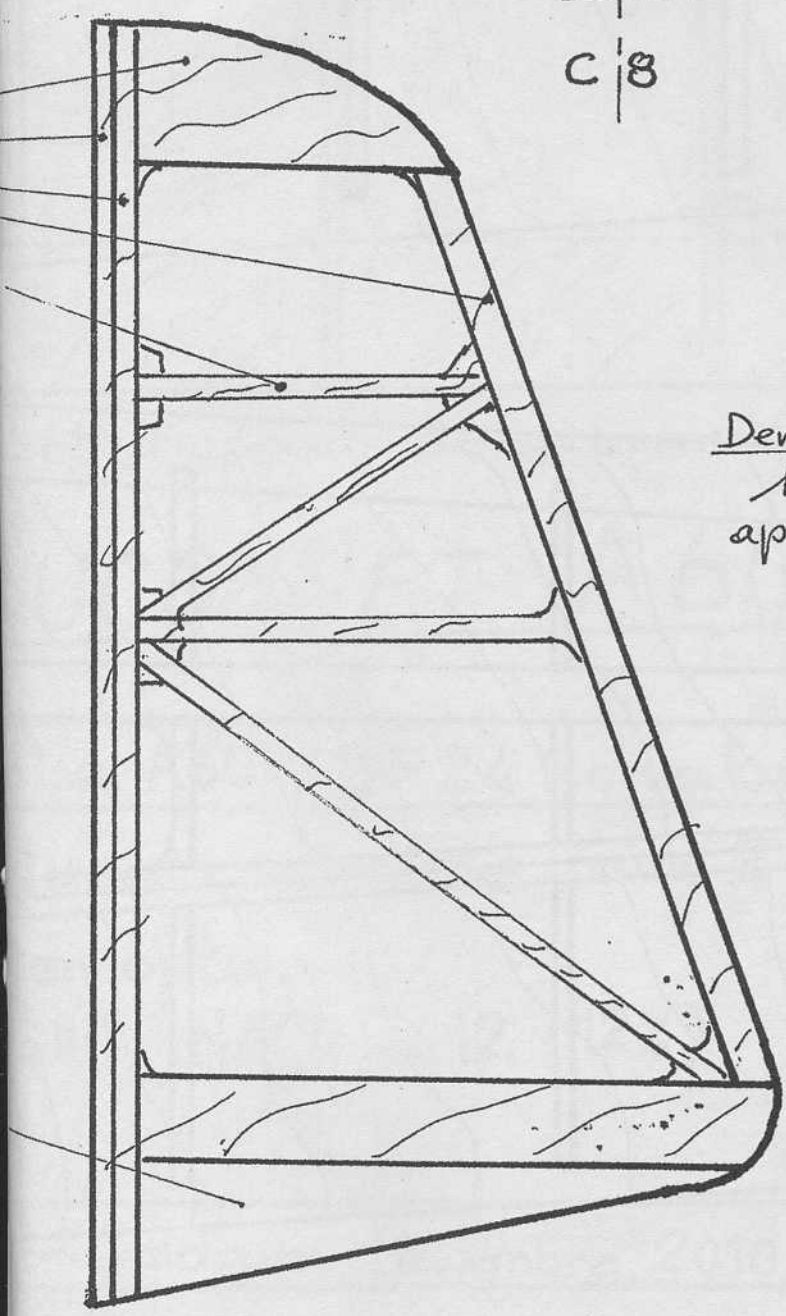
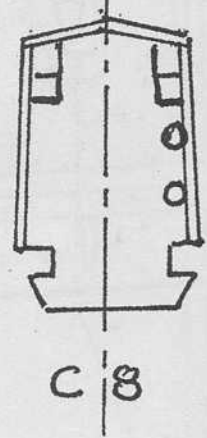
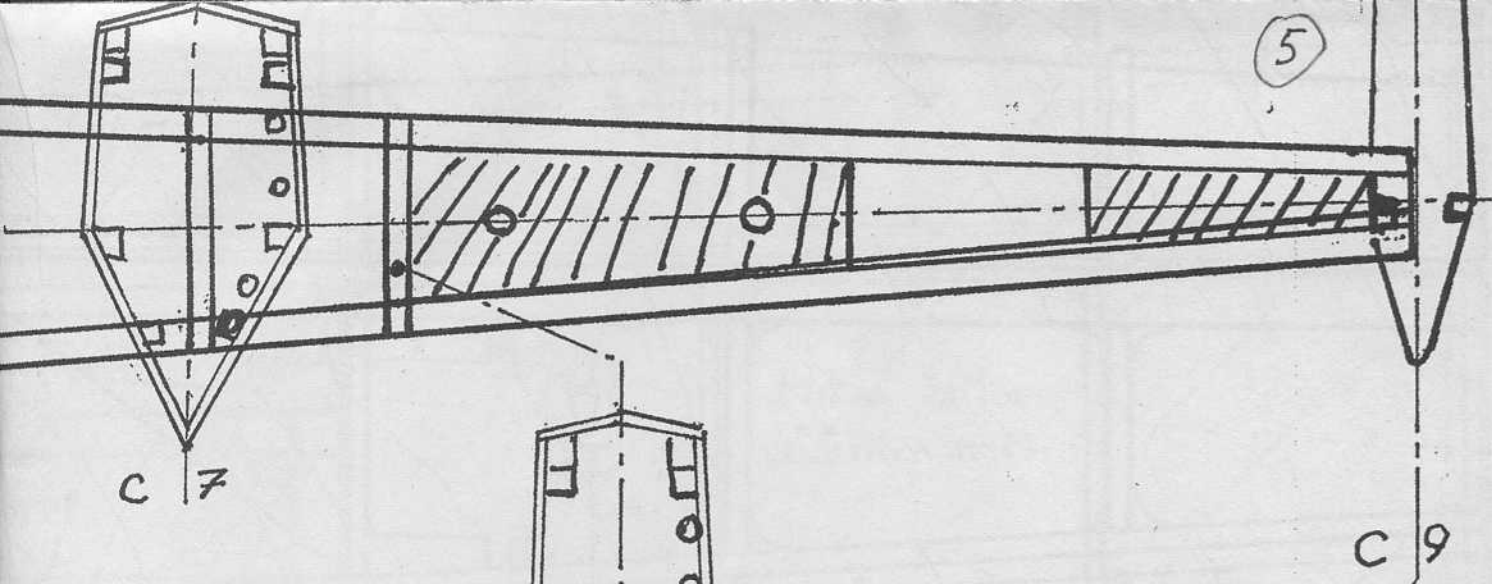
patin
acier
(petite cuillère)
taillée

ieur
(fil en longueur)

cap 0,5mm

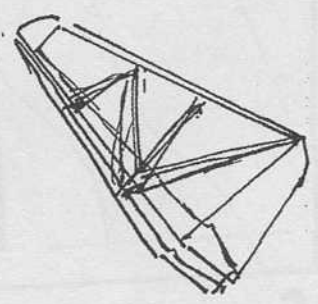


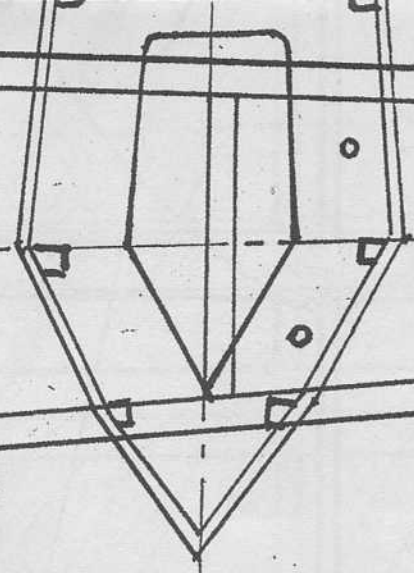
5



Derive coffrée
 10/10
 apres affinage

Derive montée "en l'air"





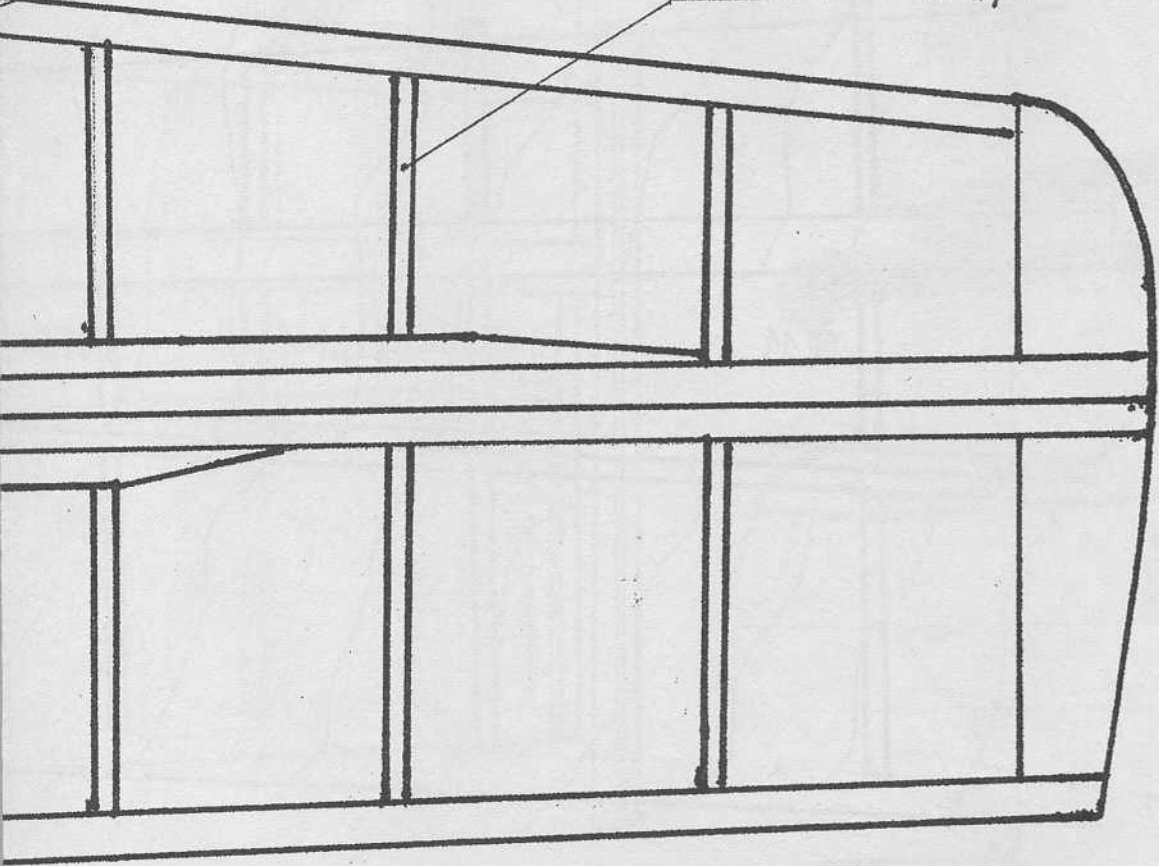
C 4

U" cap 2mm

Balsa 30/10

Baguettes Balsa 40/10

Nervures Balsa 20/10



Bloc
Balsa

