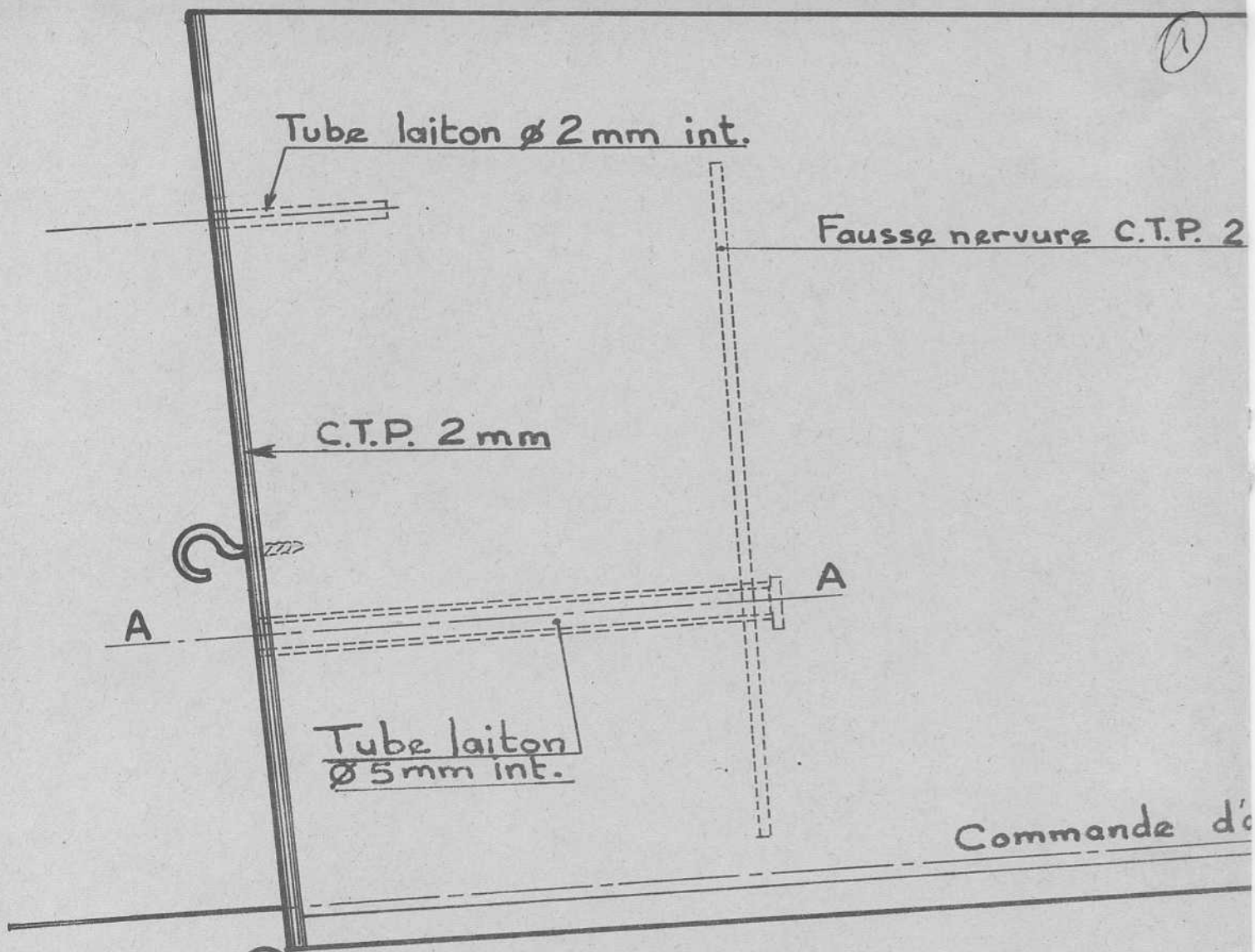
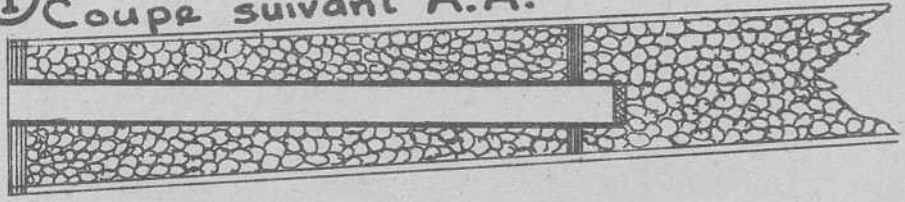


①

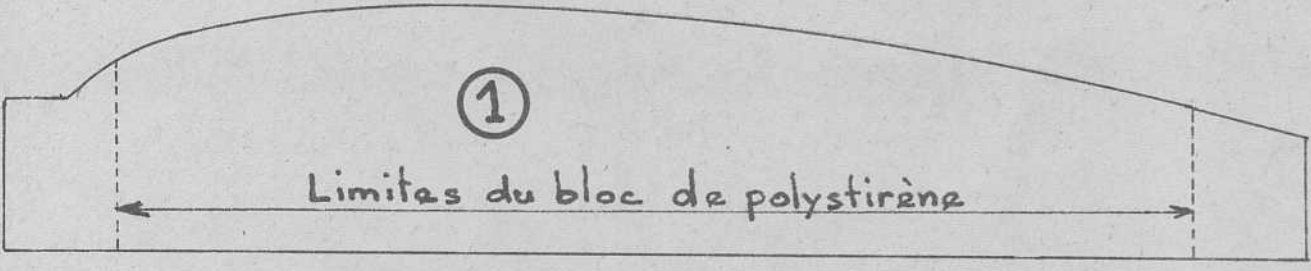


① Coupe suivant A.A.

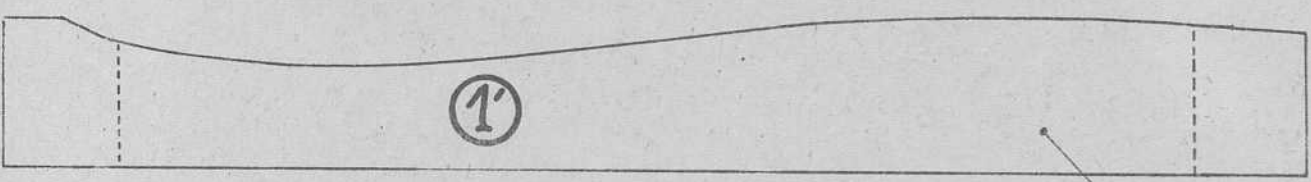


①

Limites du bloc de polystyrène



①'



Gabarits de C.T.P. 1,5 m

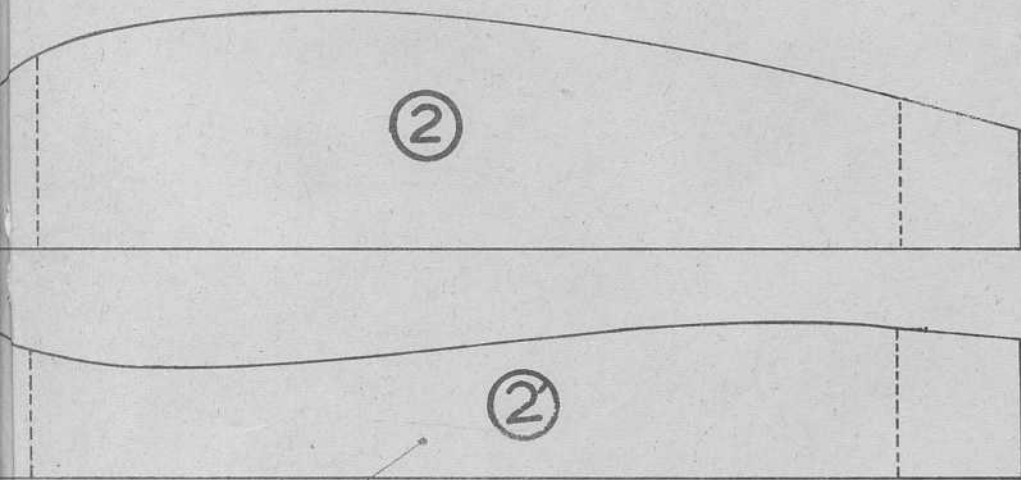
mm

Coffrage intégral
Balsa 10/10

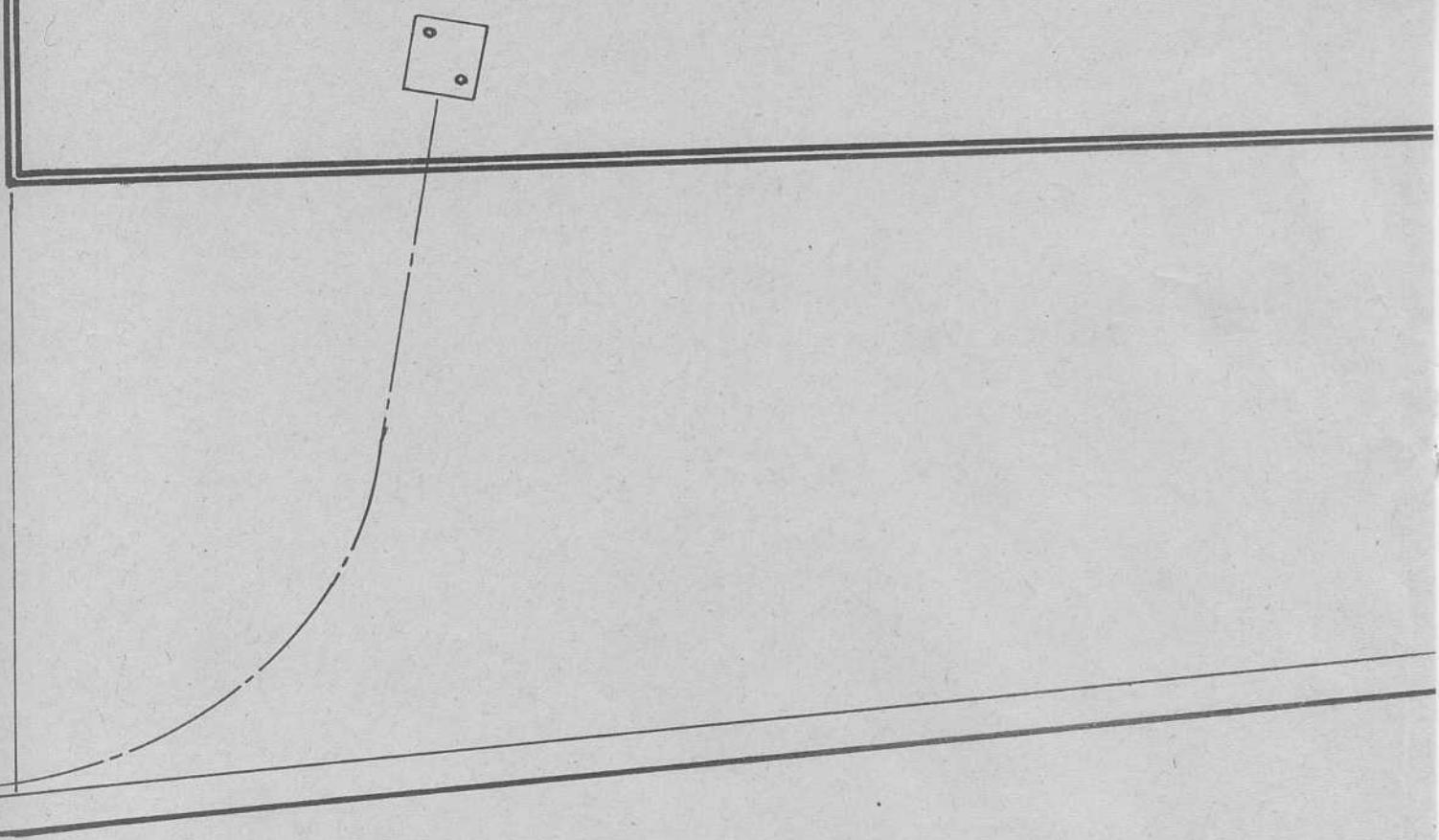
filers C.A.P. \varnothing 0,5mm sous gaine plastique.

B.A. Balsa dur
5mm

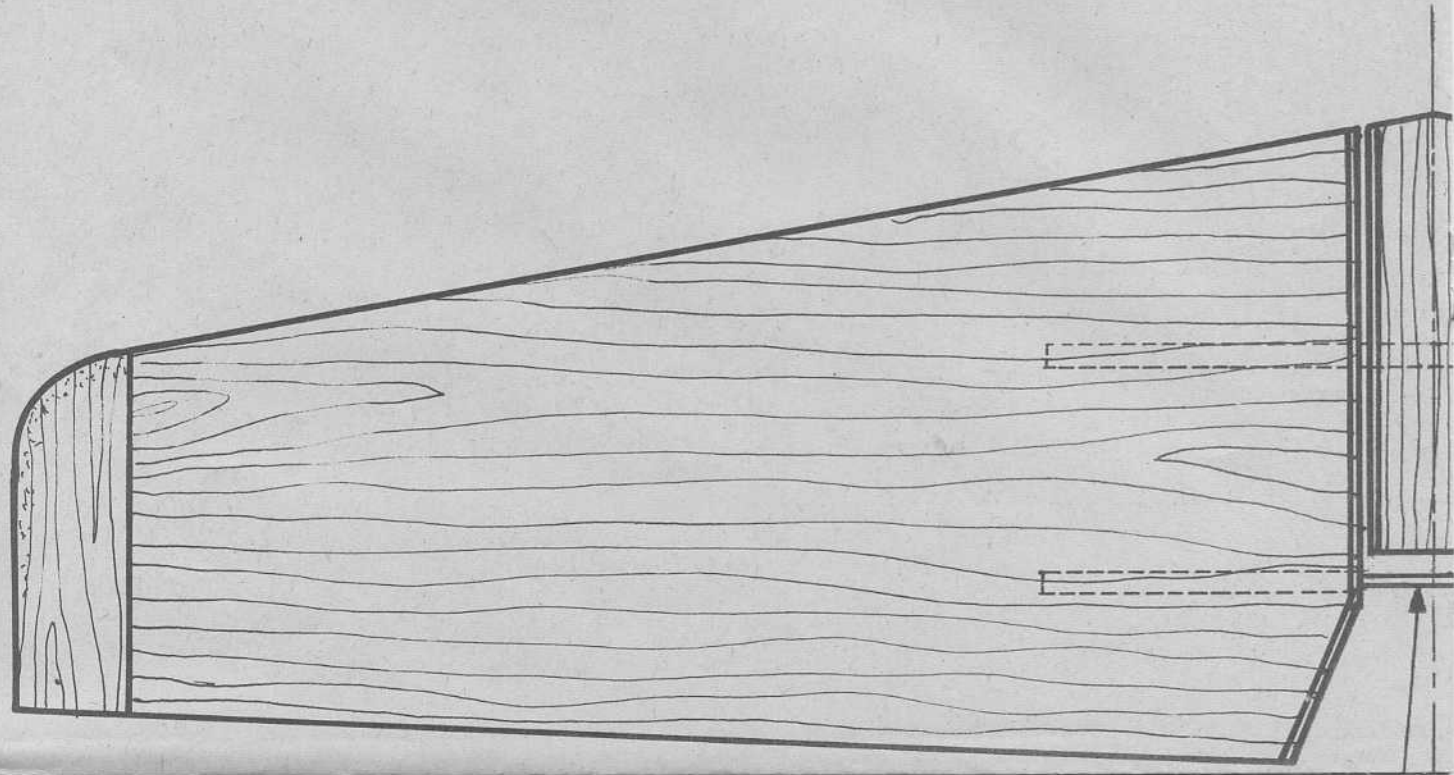
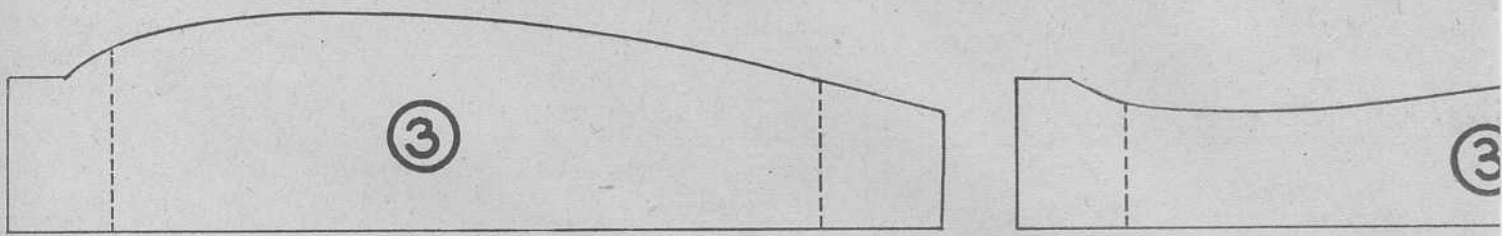
à dre : 5 cm sous chaque saumon

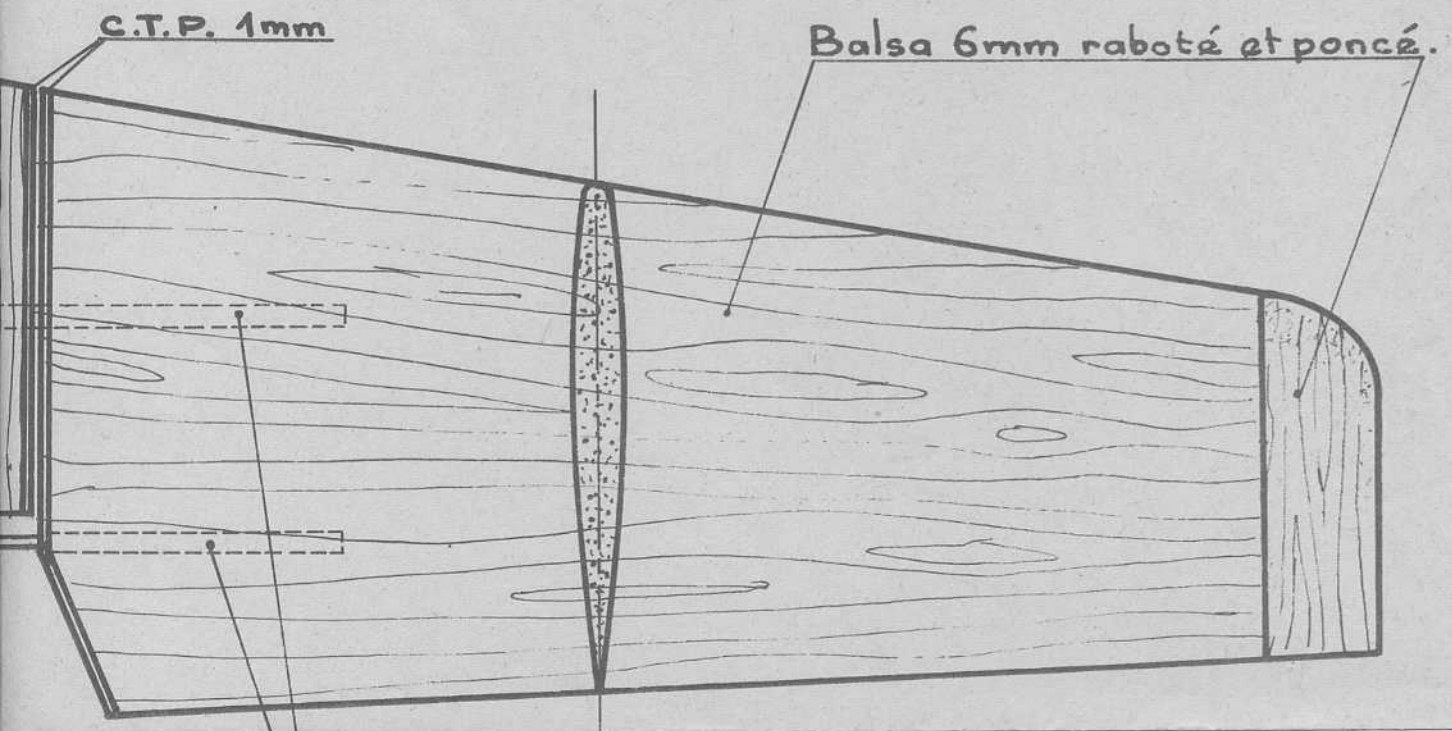
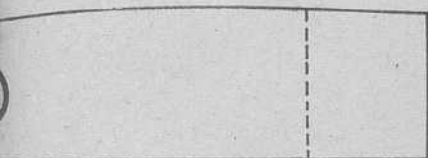
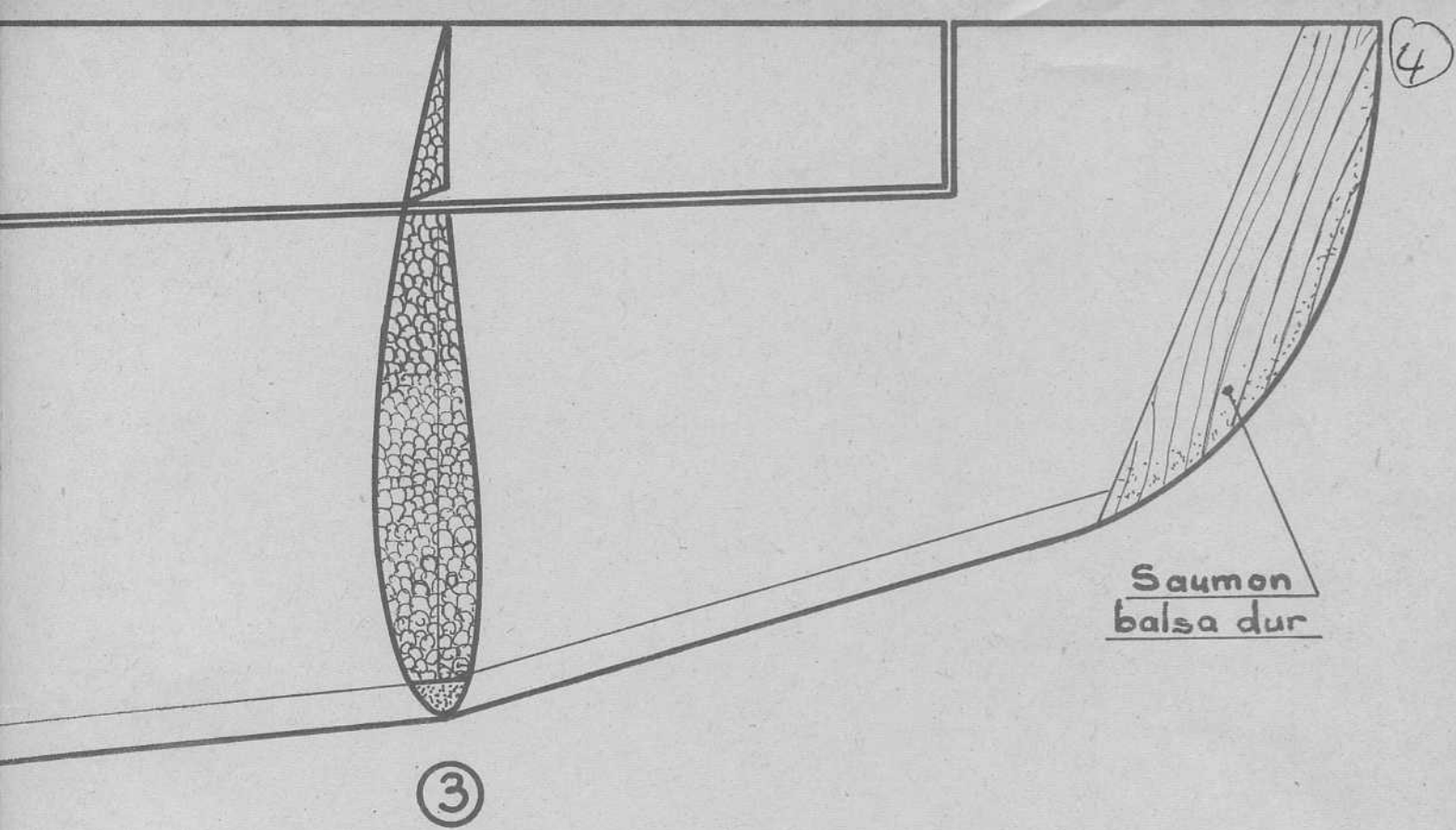


découpe
mm

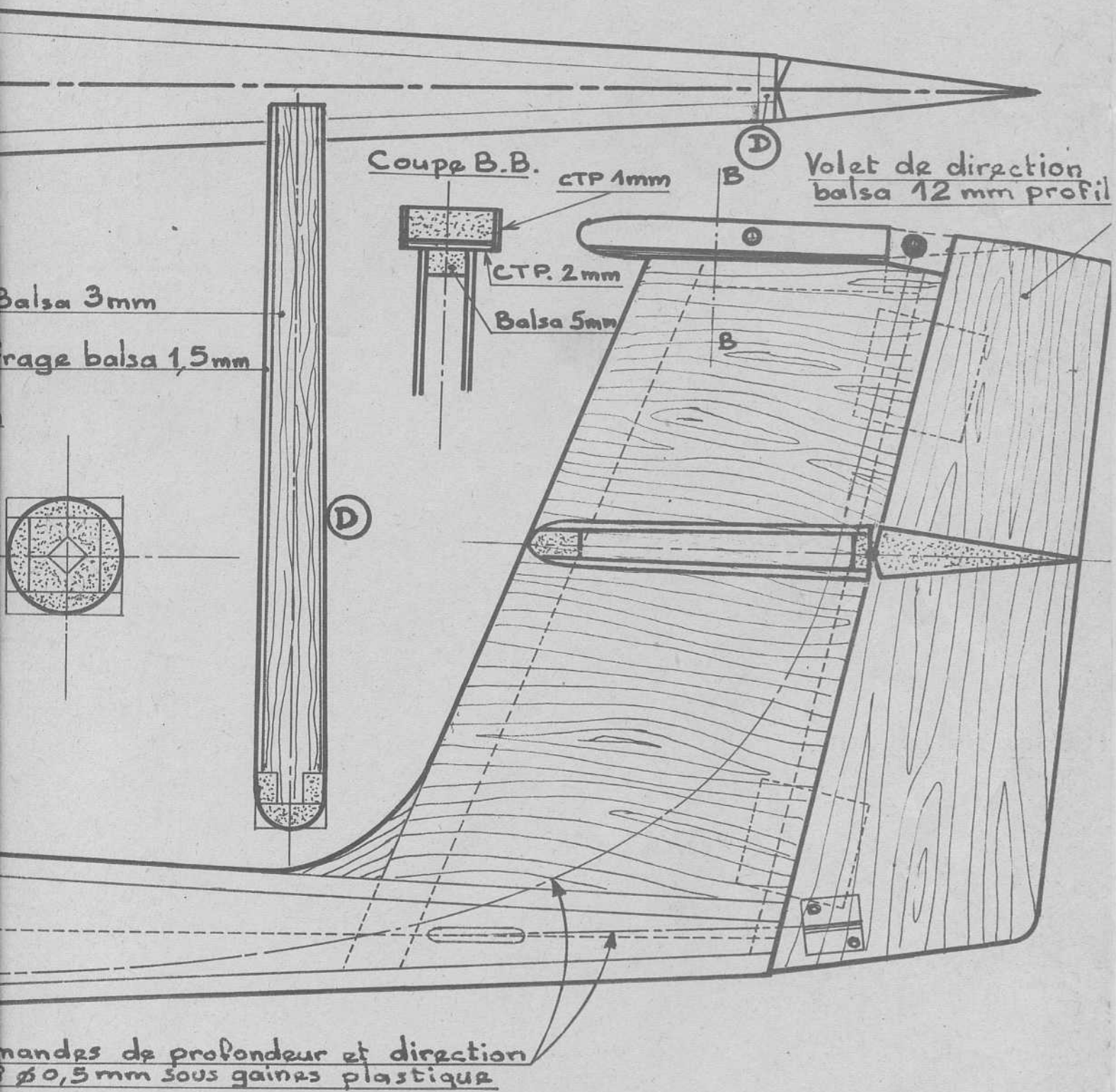


2





Tubes alu ϕ 2 int.
noyés dans le balsa



Grob 103 TWIN - ACRO

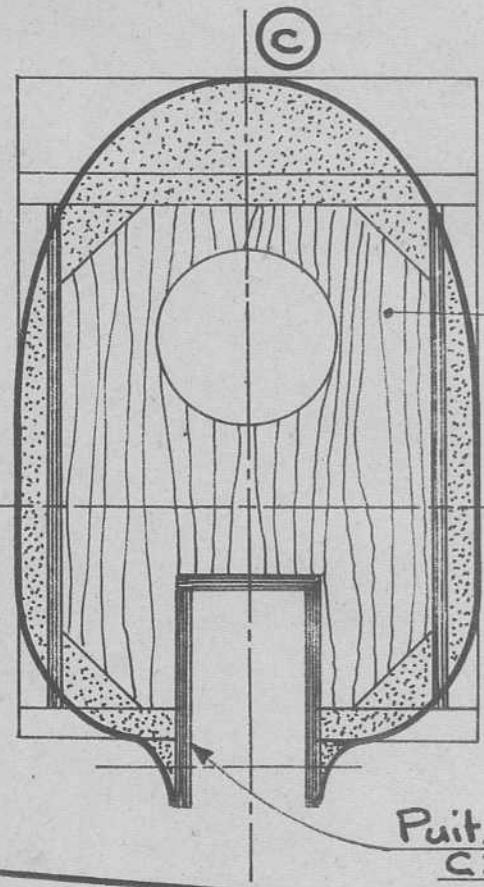
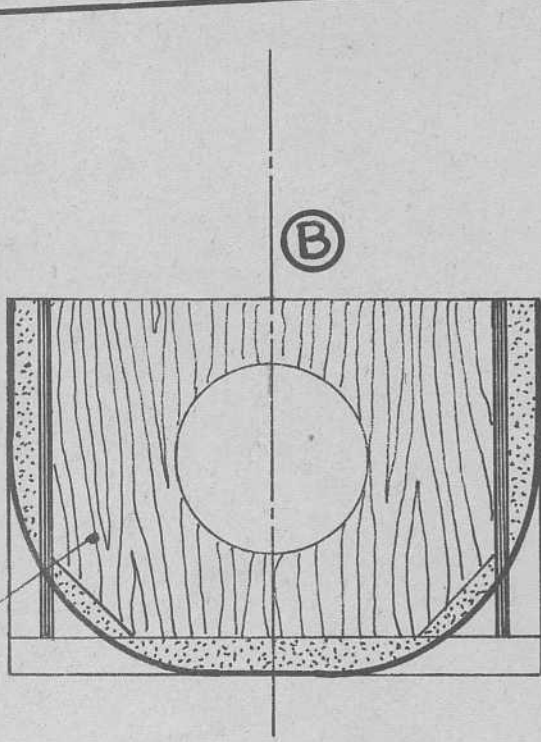
Mini planeur 3 axes pour Vol de Pente.

Envergure : 1m 50 - Longueur 0m 82 - Poids: 700g.

A. Bellec - Déc. 89. *AB*

C.A.P. ϕ 2 mm

Tourillon bois dur ϕ 6 mm



Cof
C.T.P. 3 mm

Balsa 4 mm

Puits de roue
C.T.P. 2 mm

Balsa 4 mm

Baguettes balsa \blacktriangle 10 x 10

Com
C.A

balsa

(6)

