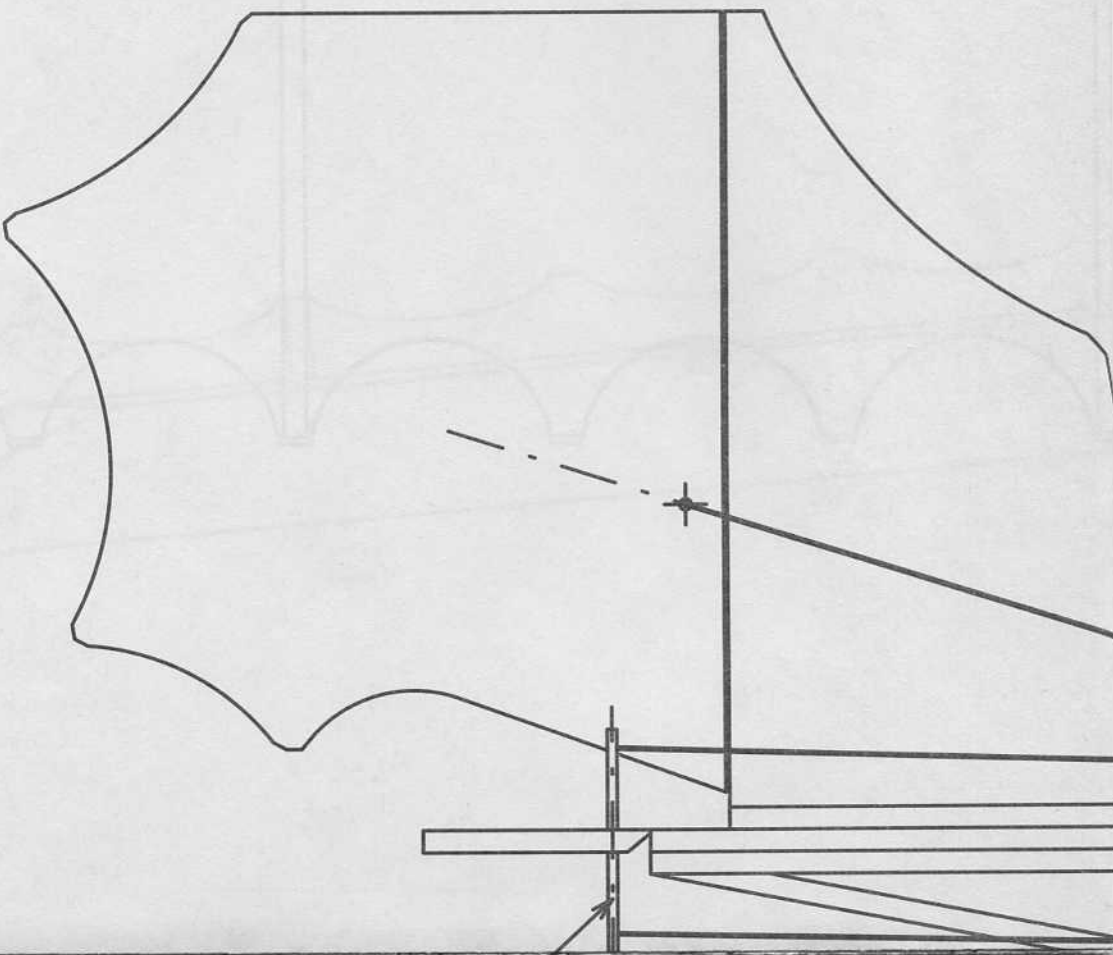
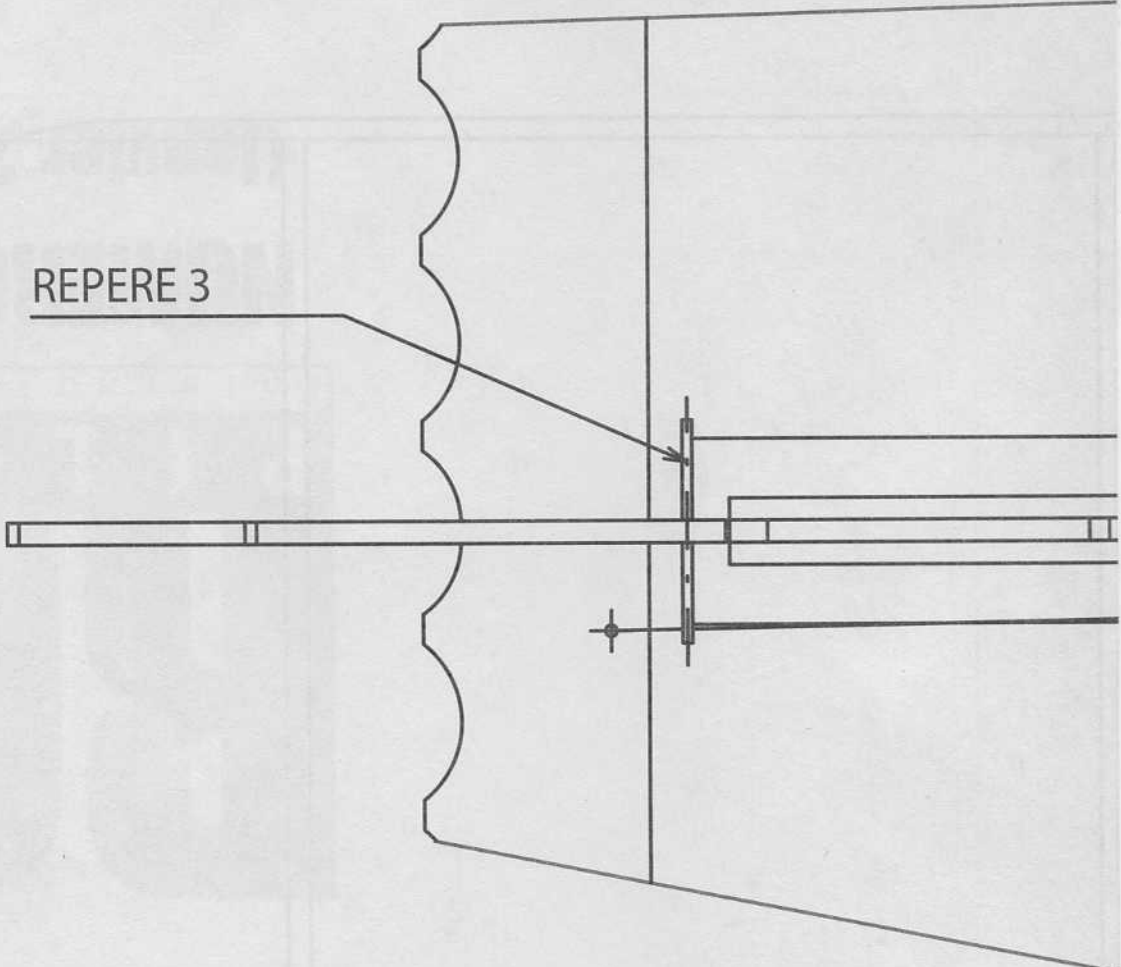
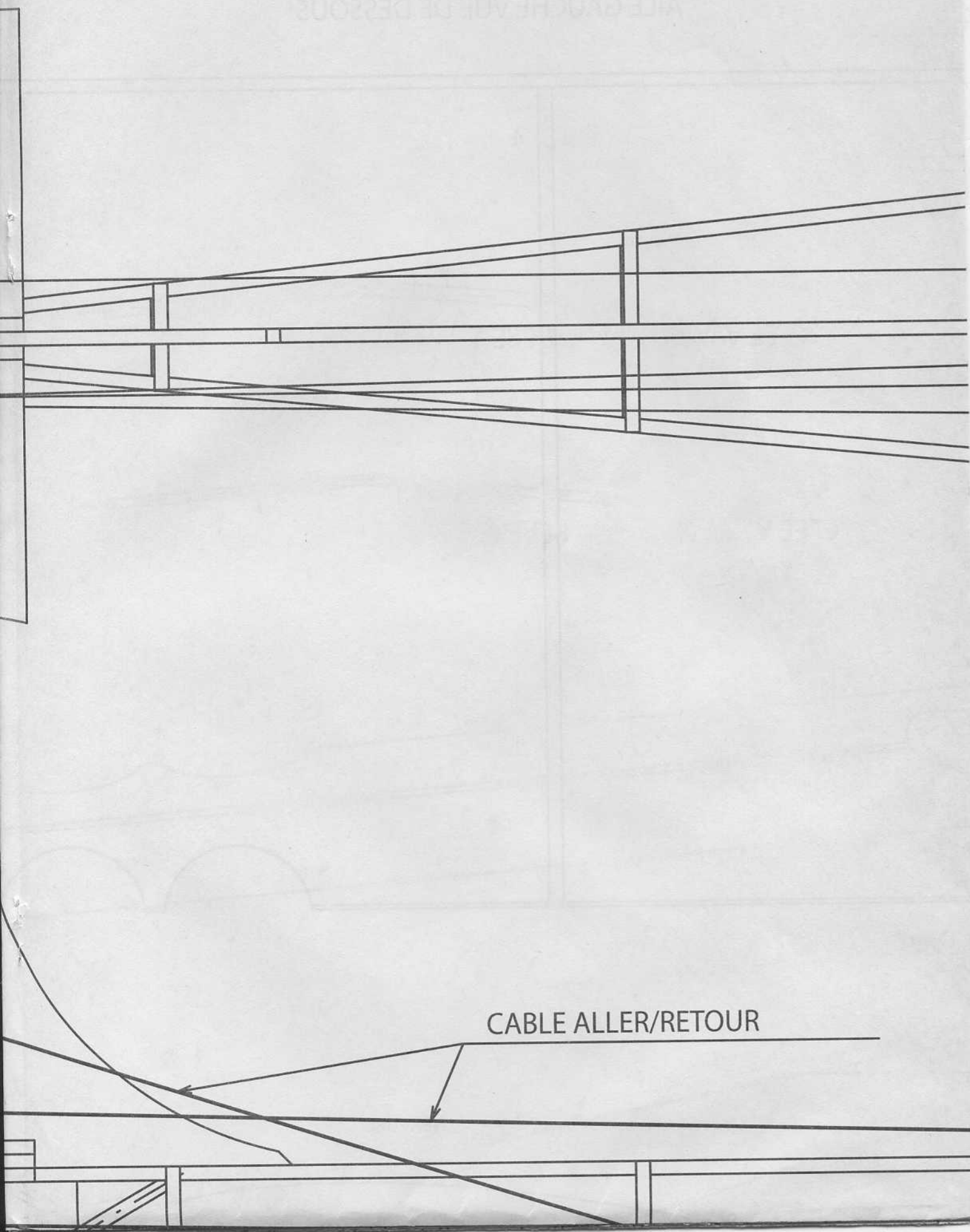


(A)

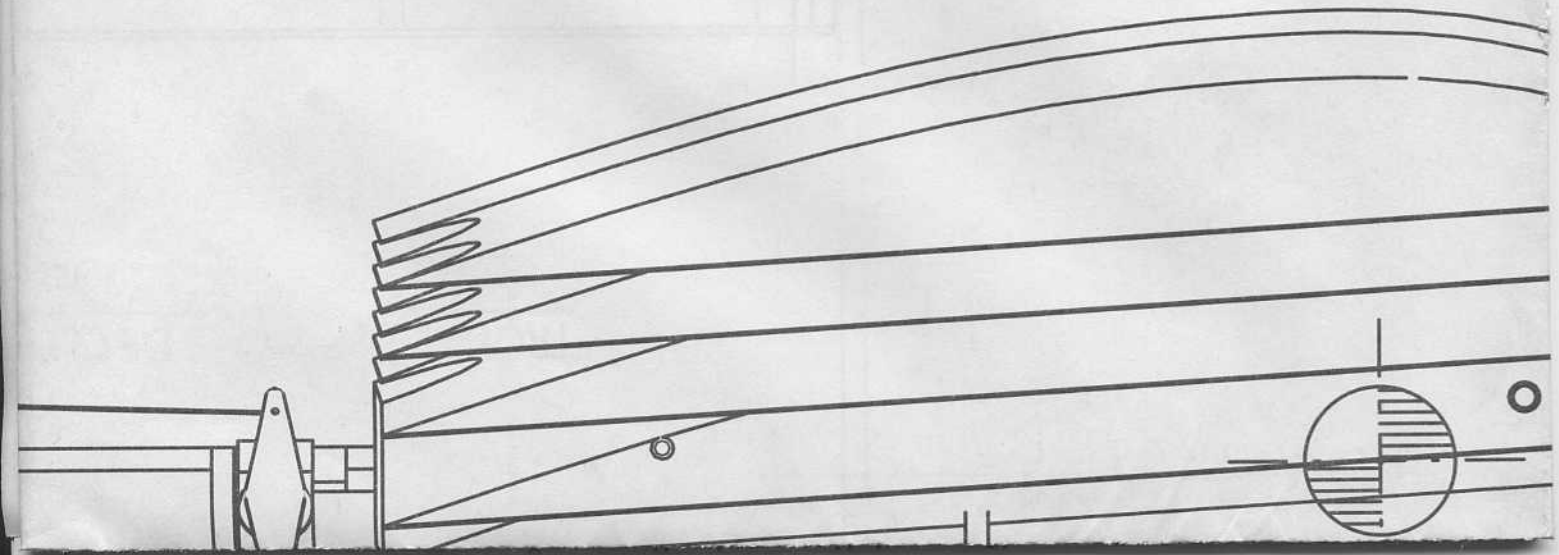
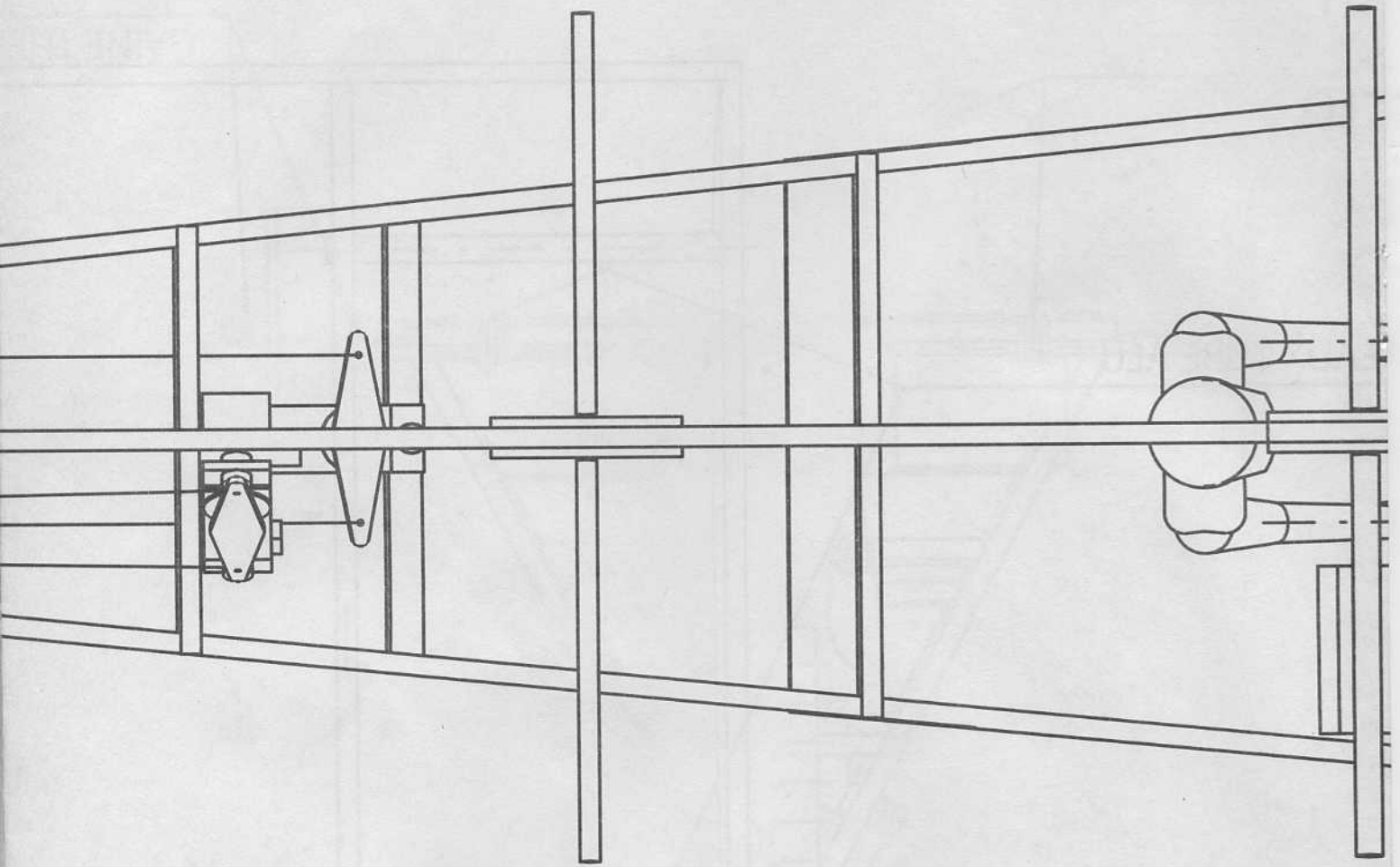
REPÈRE 3

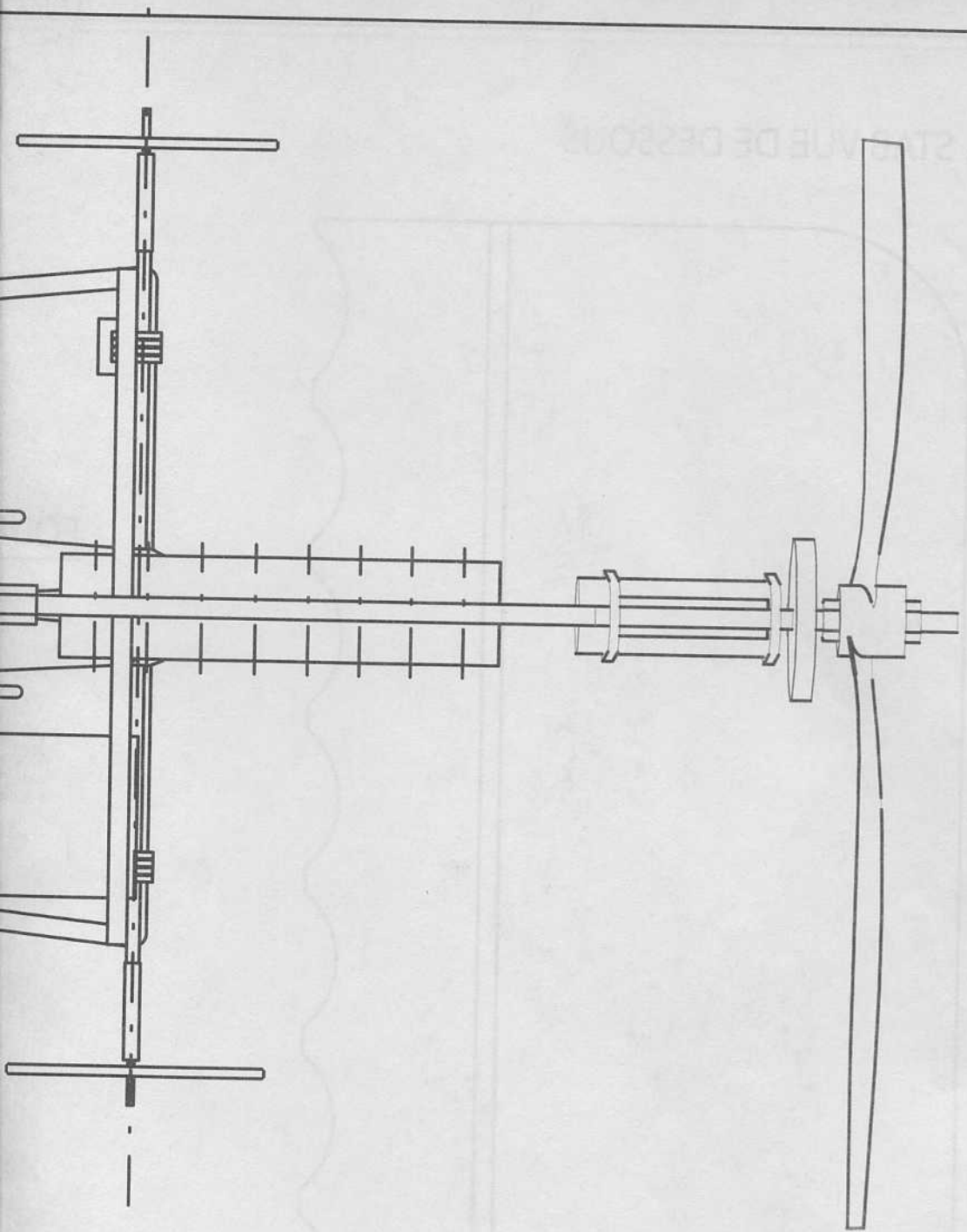


FILE GAUCHE VUE DE DESSOUS

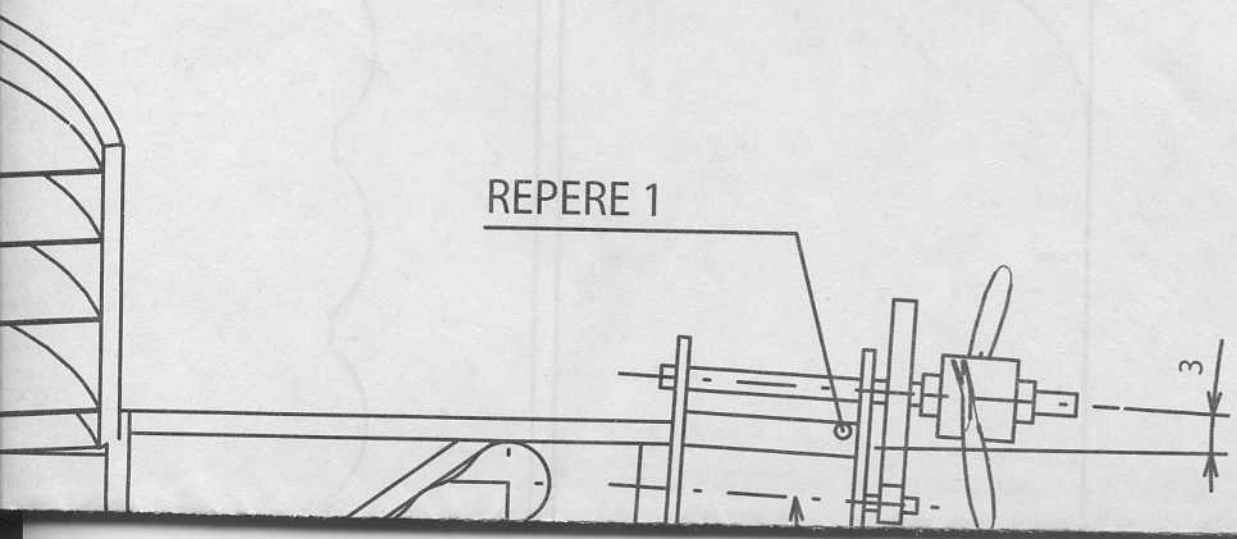


CABLE ALLER/RETOUR





REPÈRE 1

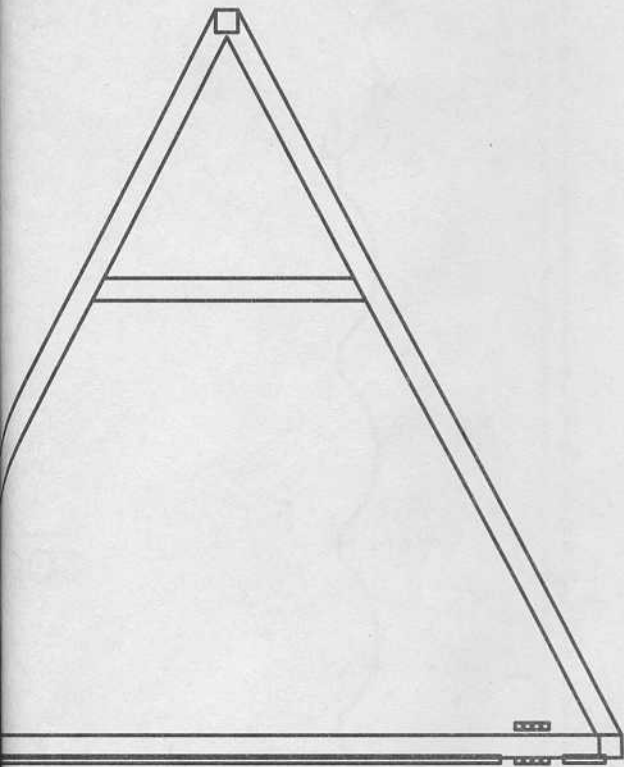




ACCU

MOTEUR GWS 150
REDUCTION 7:1
HELICE 10x4,7

SECTION A-A



RC
PILOT
International

NUMERO 15
(Janvier 2005)

CONCU PAR
JEAN-PHILIPPE VINCENT

DESSINE PAR
PAT

LAMBINETTE

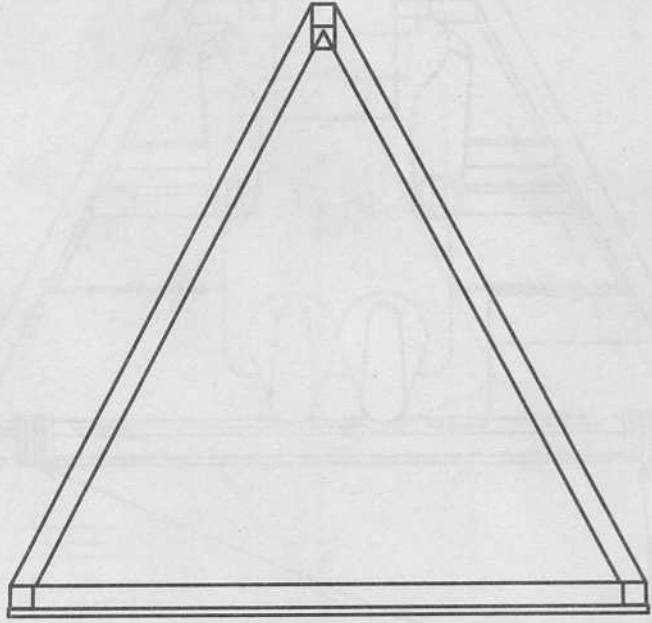
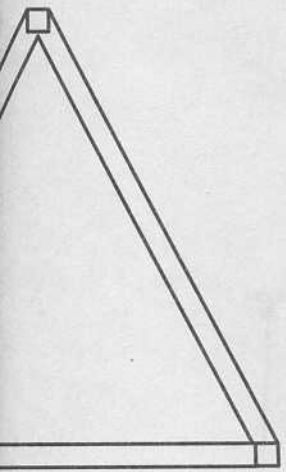
5

MICRO SERVOS 5g

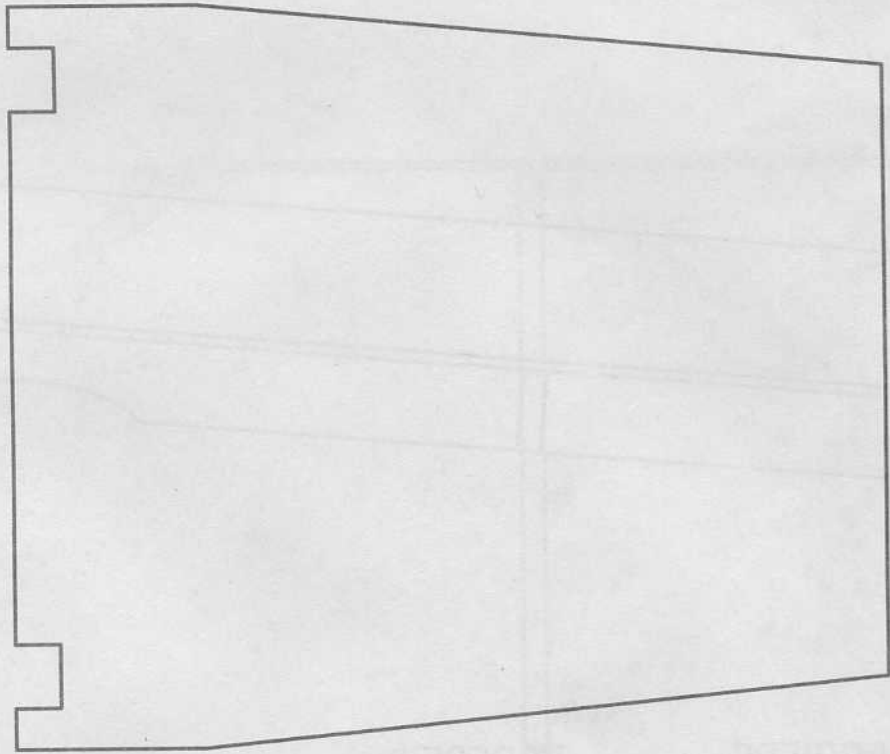
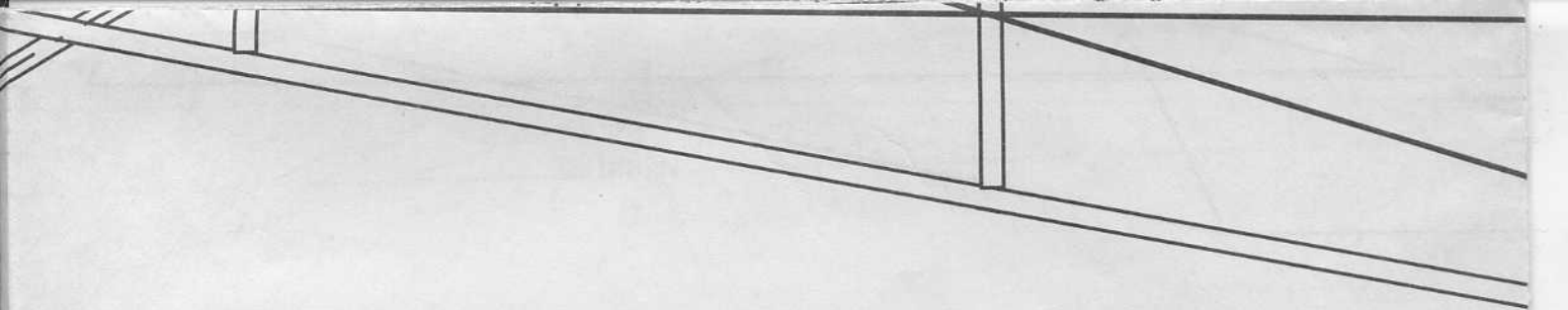


SECTION B-B

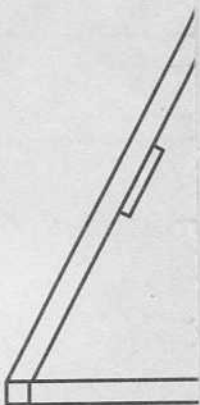
SECTION C-C



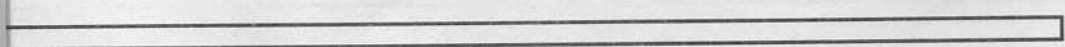
STRUCTURE BAGUETTE 3X3 SAMBA



SECT



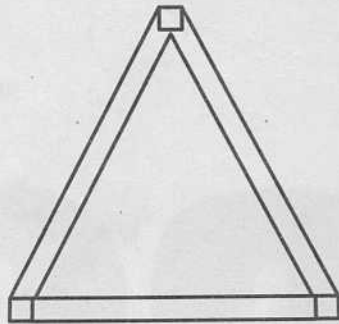
SECTION F-F



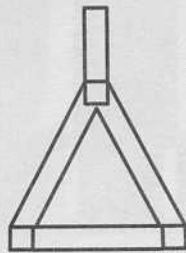
7



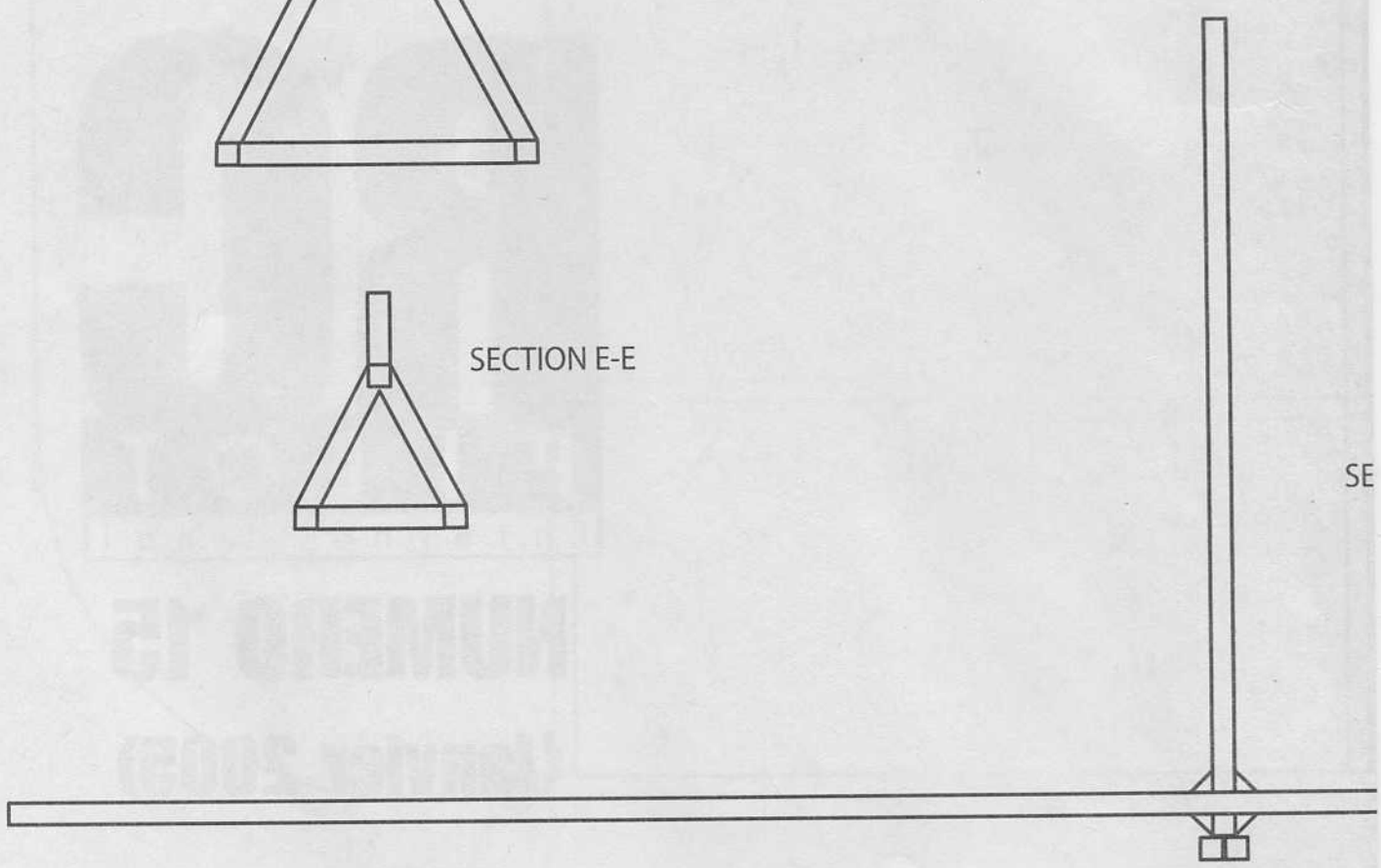
SECTION D-D



SECTION E-E



SE



(8)

STAB VUE DE DESSOUS

