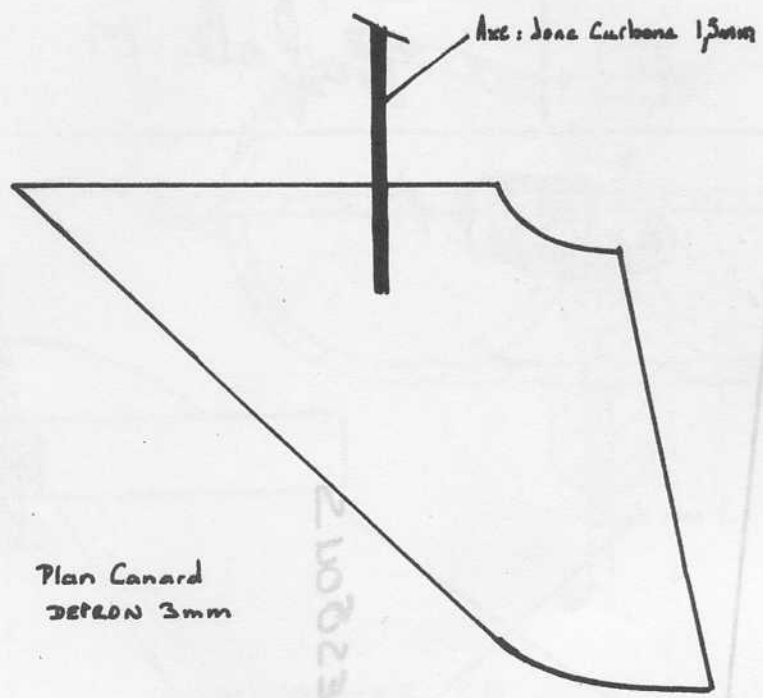
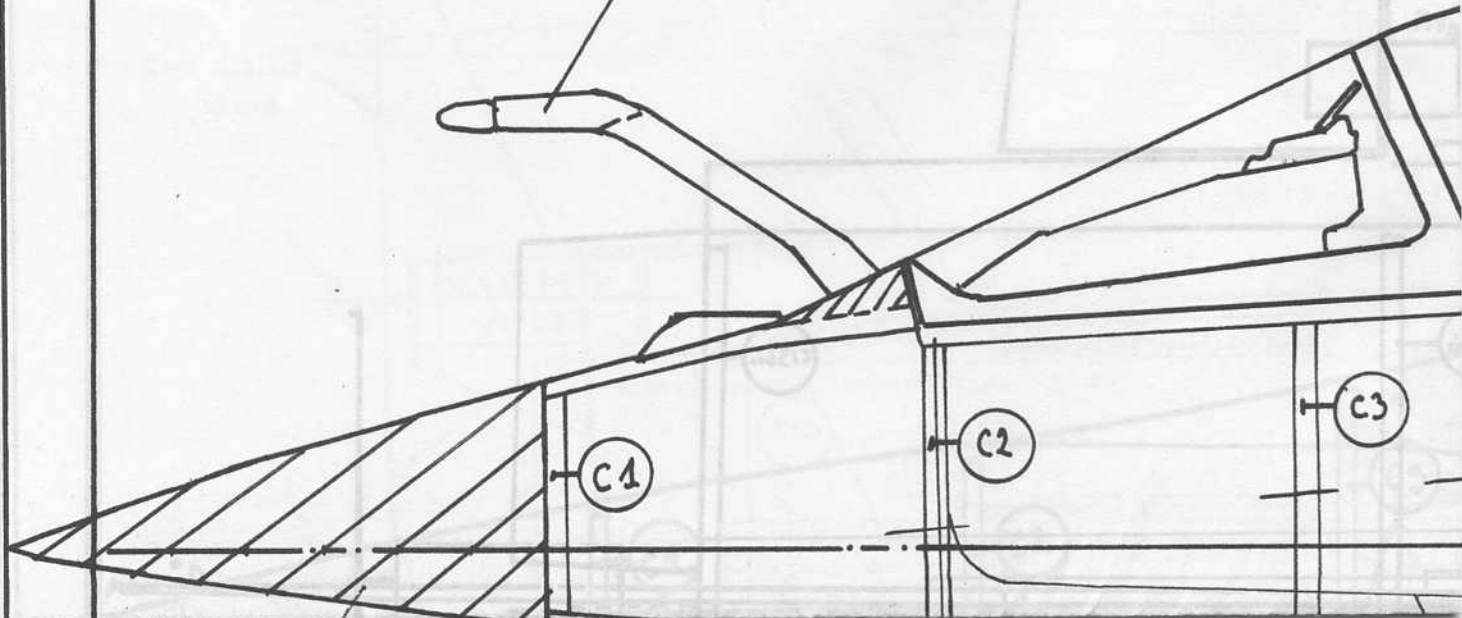


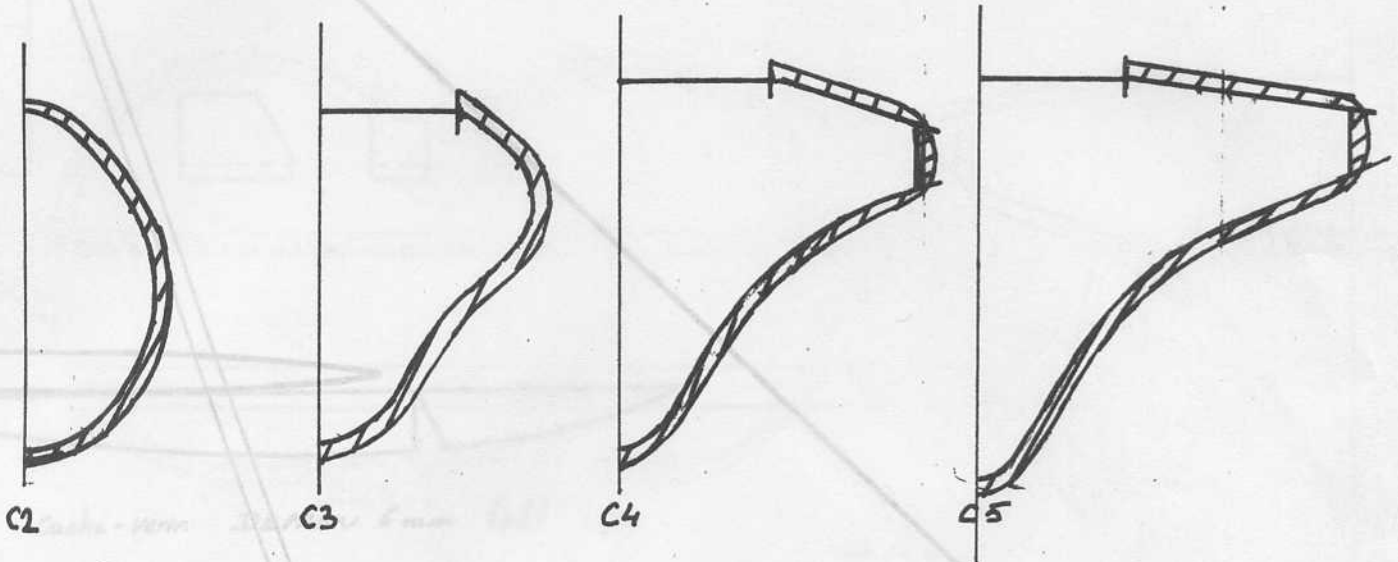
(15)

(1)



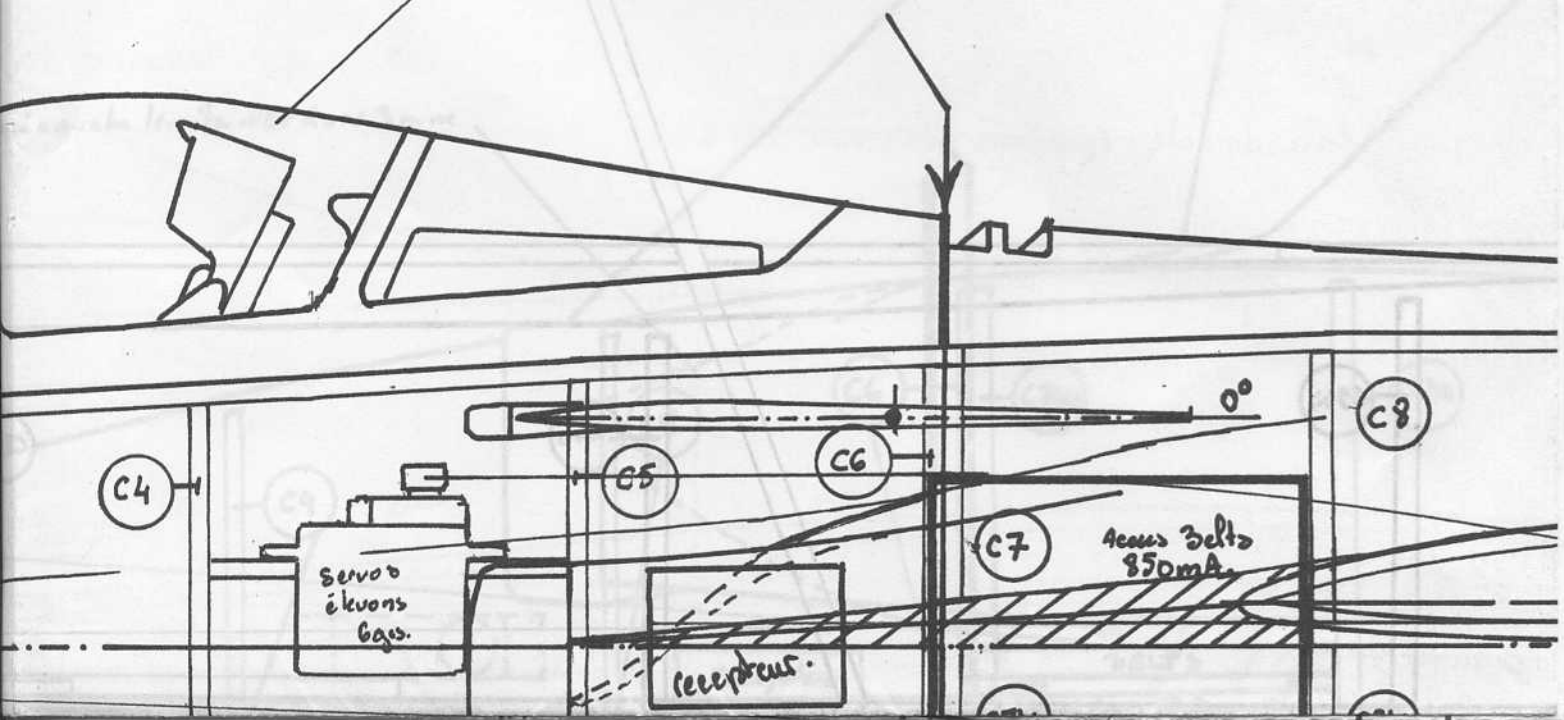
Perche: CTR 15/10^{ème} (côté droit du cockpit)



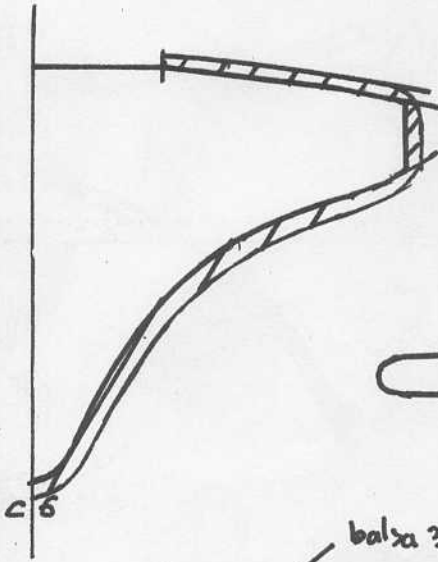


Couloles partie avant. DEPRON 3mm

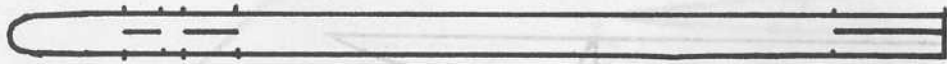
Verrucose: bouteille soda moule à chaud sur forme en bois



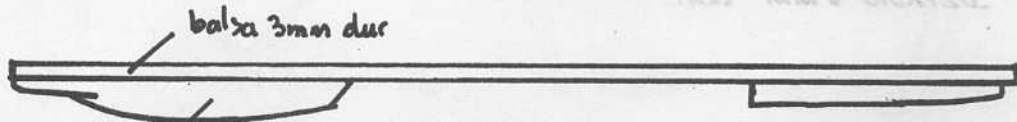
PI
CON
D
F



Empennages missile: CTF 8110^e



Corps du missile maigre
rend balsa 6mm



balsa 3mm dur

DEPRON 6mm

Rail lance. missile de bout d'aile

dérive: DEPRON 3

Arête dorsale : Épaisseurs de DEPRON 3 et 6 mm.

C9

C10

Contrôleurs

0°

Commande à levons Cam 5/10ème

(4)

encarté RCM 287



CEPTION ET DESSIN: Ph. JAMET

ATE : 11 2004

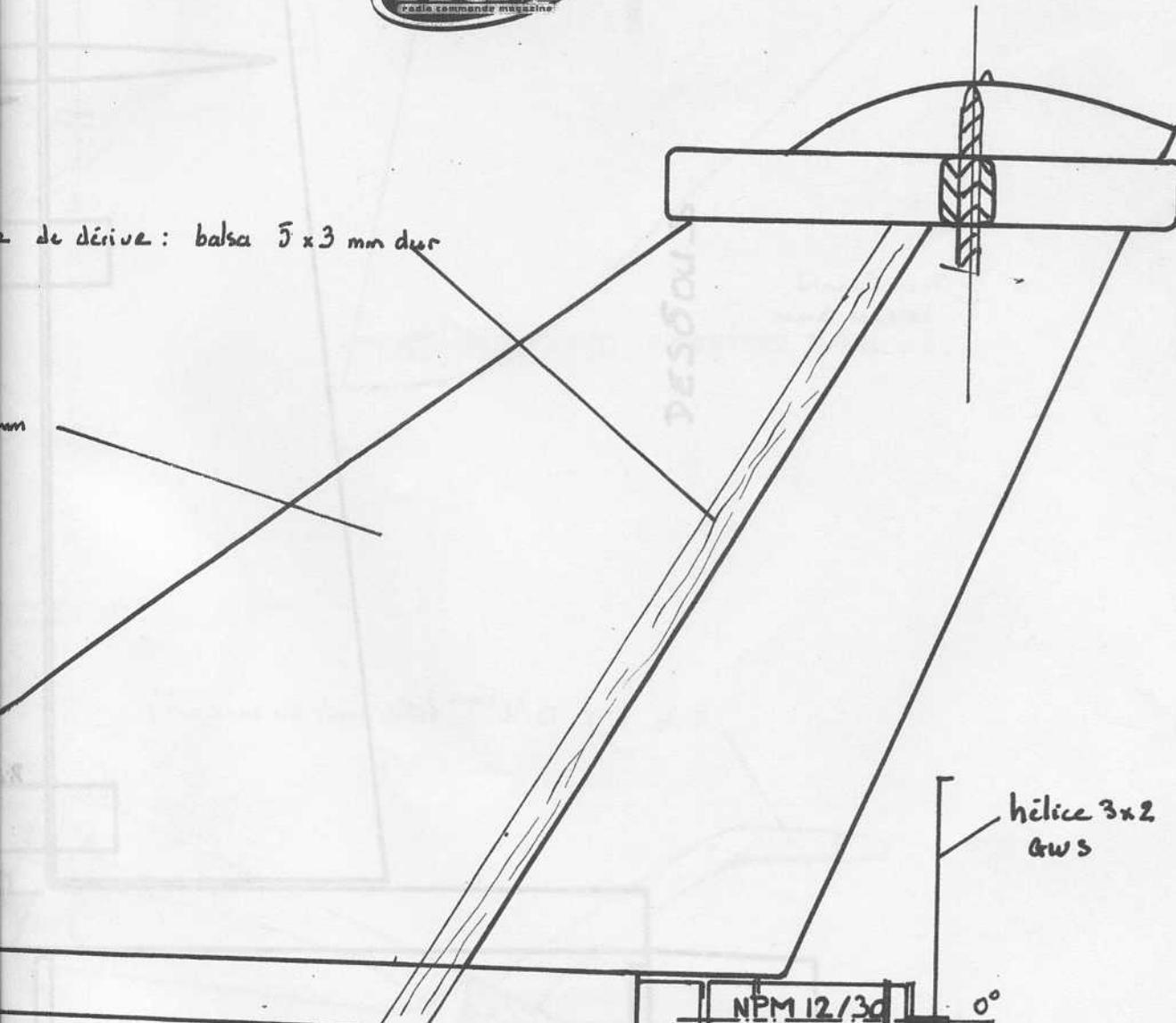
Mini jet électrique

R.C.M.

Rafale M



de dérive : balsa 5 x 3 mm d'esp



hélice 3x2
6ws

NPM 12/30
#100 +/-v

0°

construction monocaque.

C11

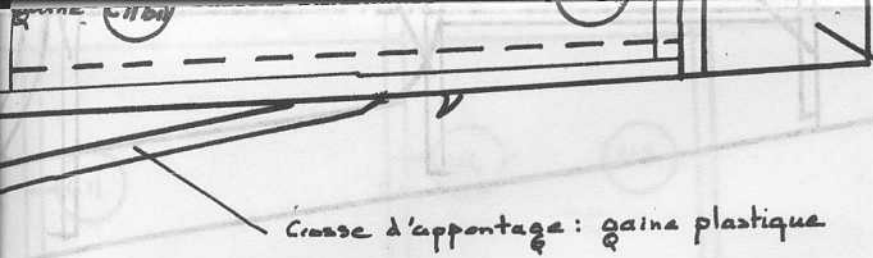
C12

C13

4mm

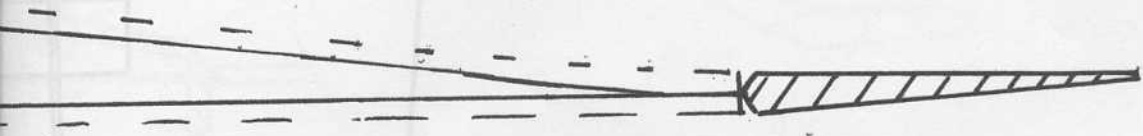
Support moteur
CTP 15/10c

C13a

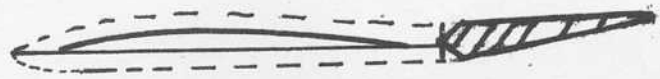


Tuyère papier roulé

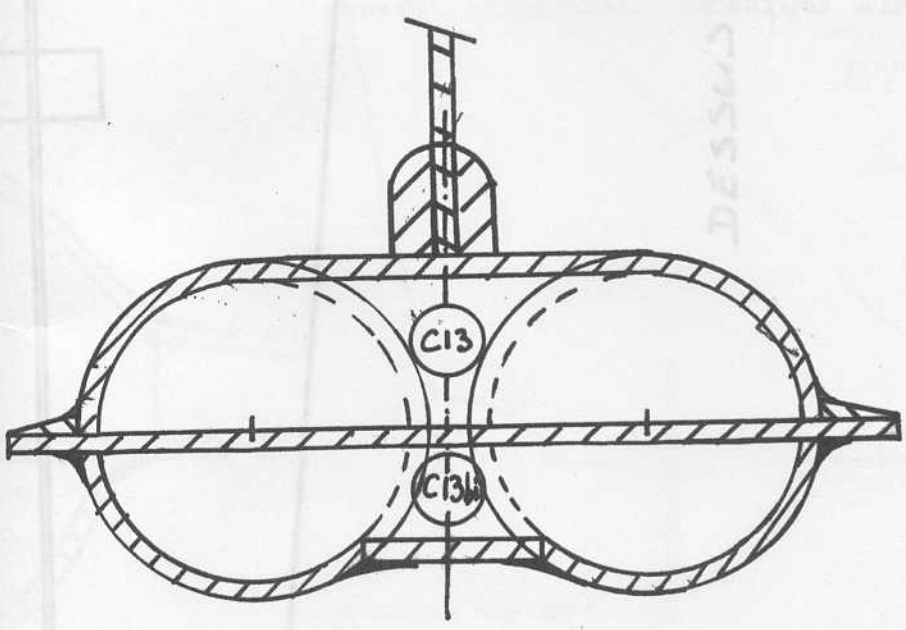
Crosse d'appontage: gaine plastique



ELEVONS: DEPRON 6mm
Profilé.



N2 DEPRON 3mm



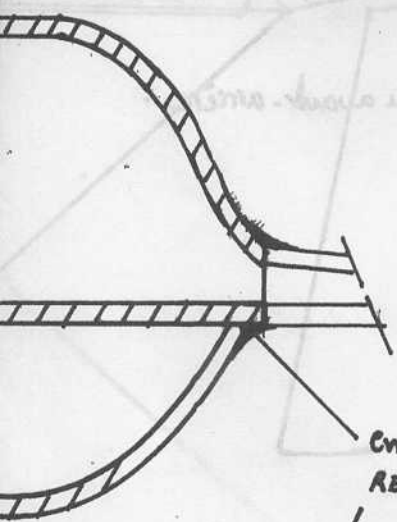
DESSUS

(JK)

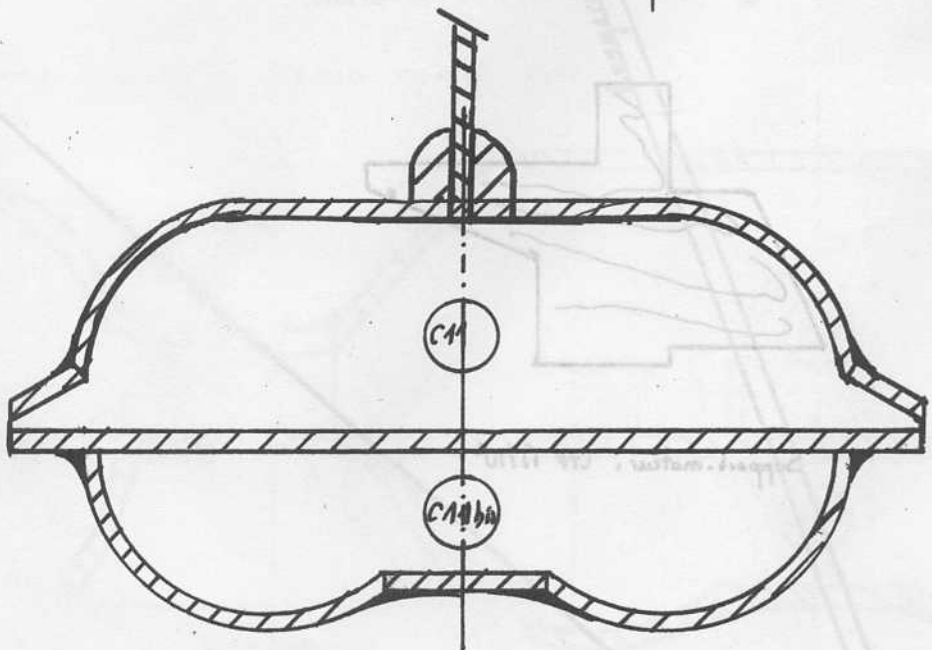
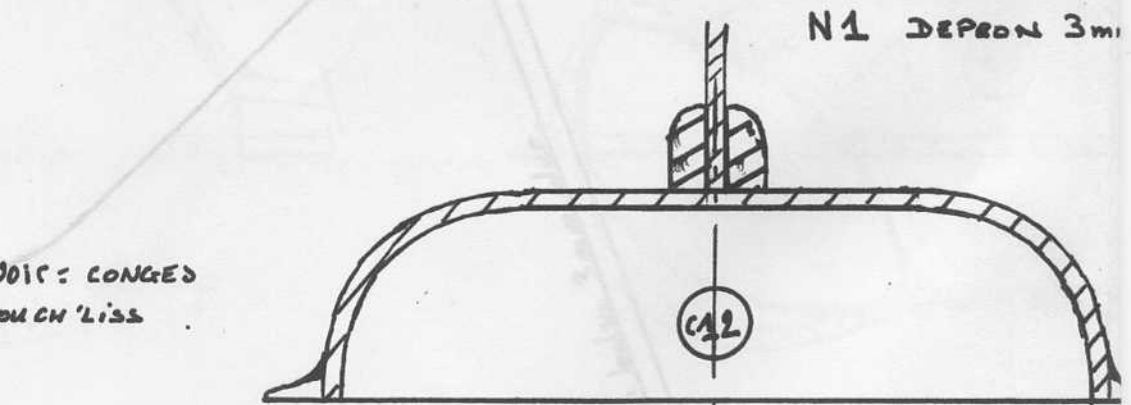
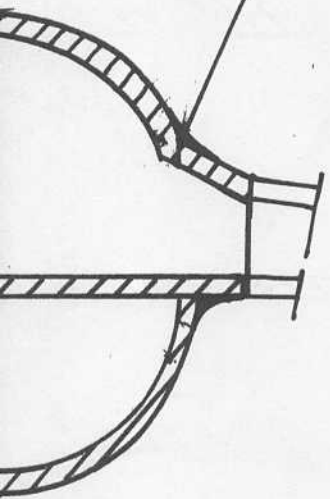
(5)

Rectangle papier de verre
pour préhension lors du lancé

à re

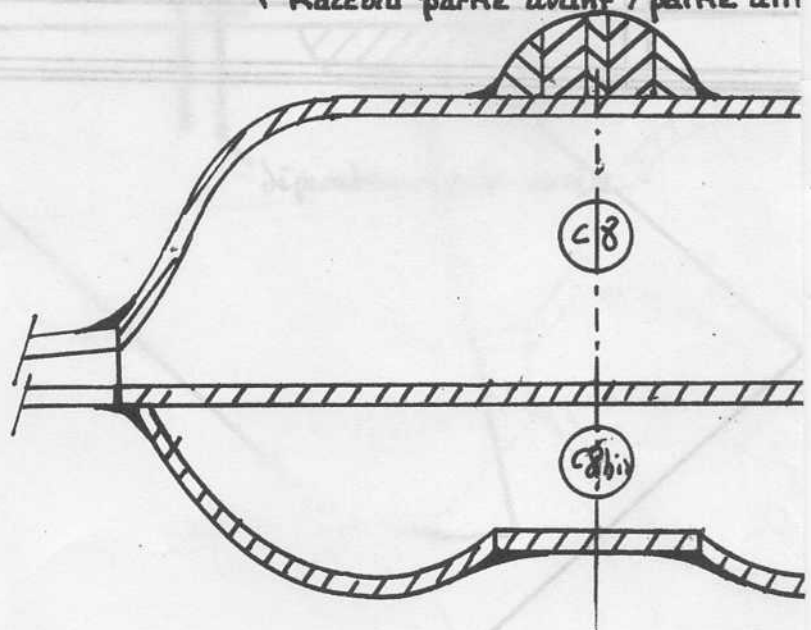
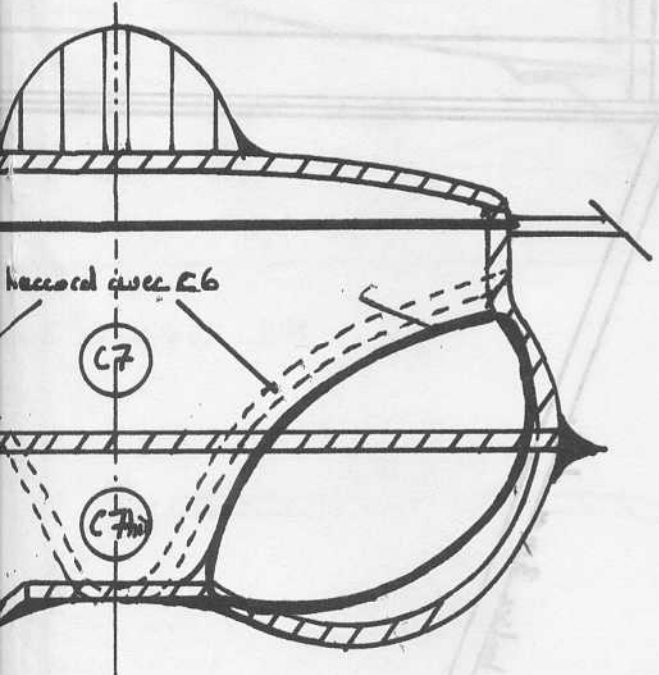


En NOIR : LONGES
REBOUCH LISS



base d'assemblage évidée après montage

Raccord partie avant / partie arri



Trait gras = Forme de l'entrée d'air.

