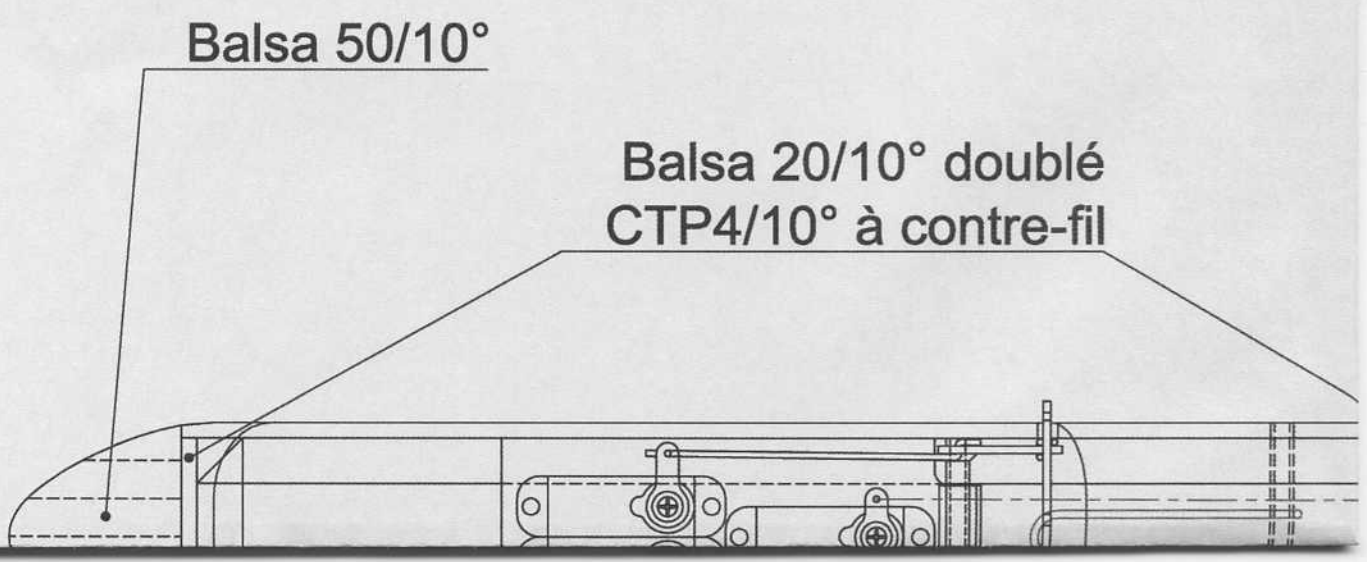
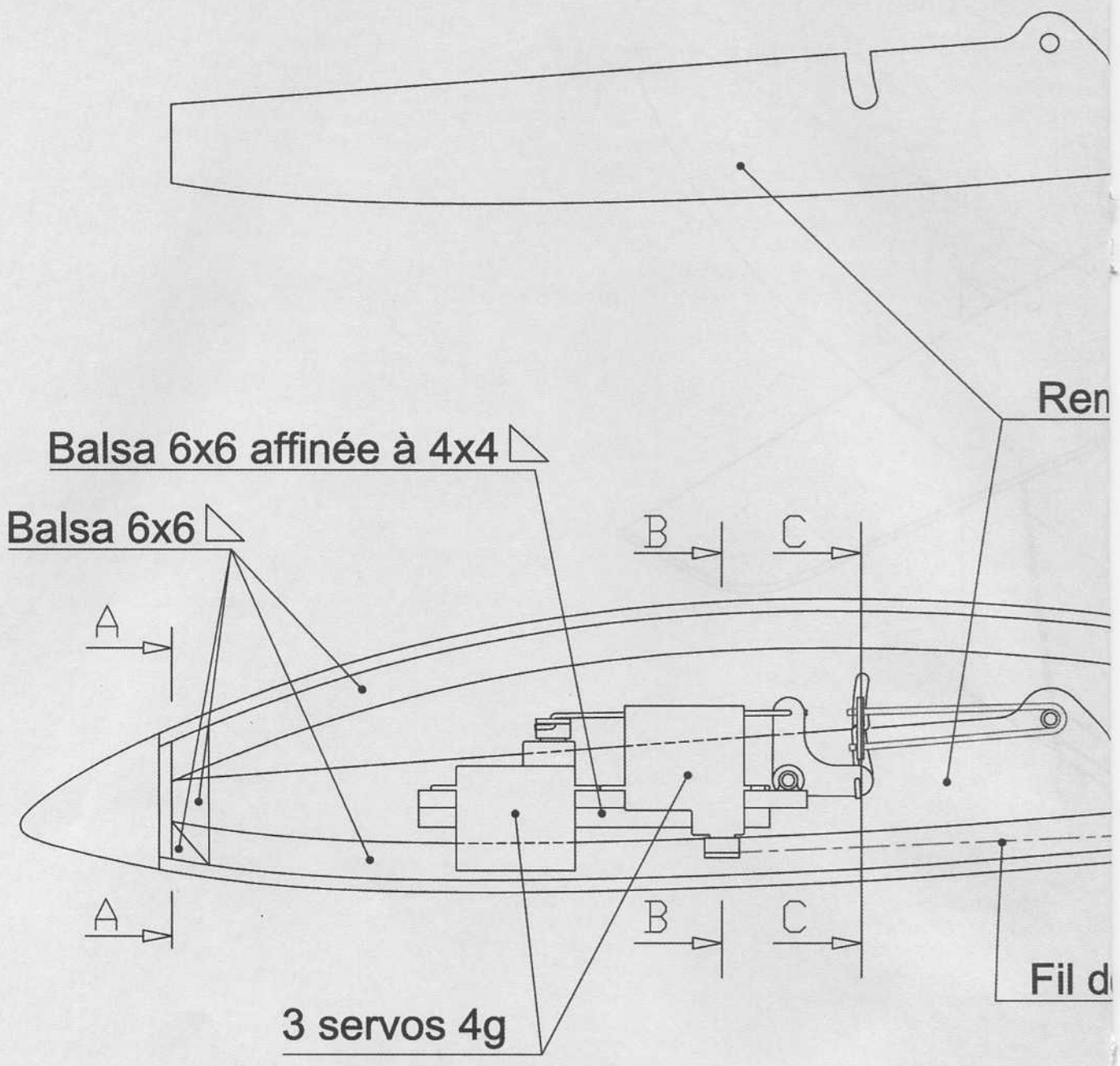
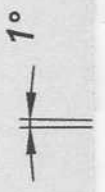


1



2

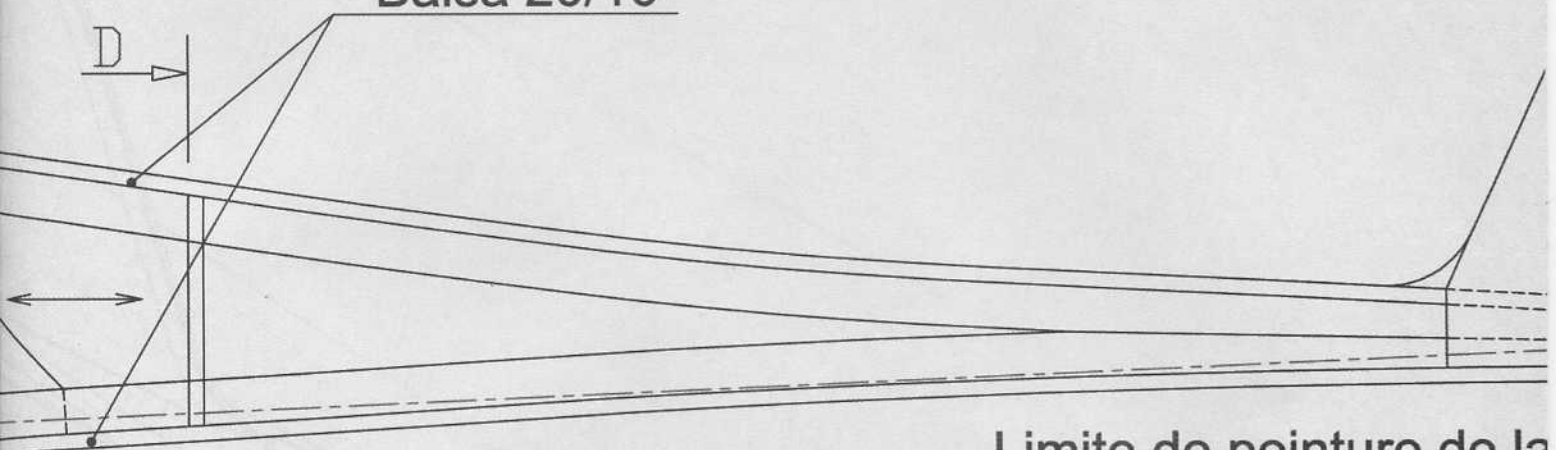
BF bis  
deux cotés



Port CTP 4/10°

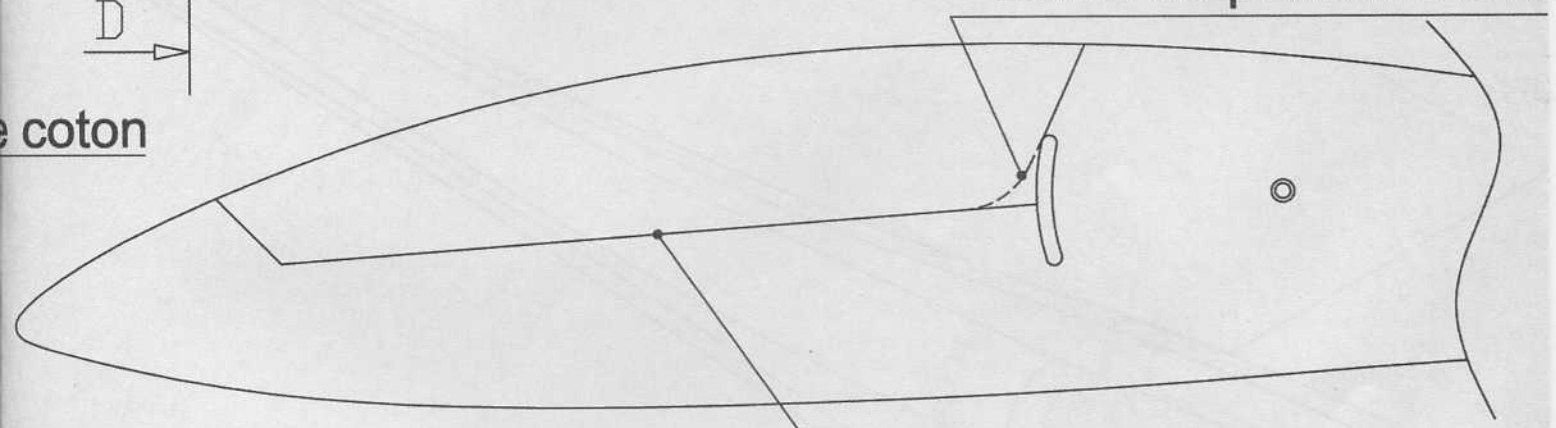
Charnière fibre

Balsa 20/10°



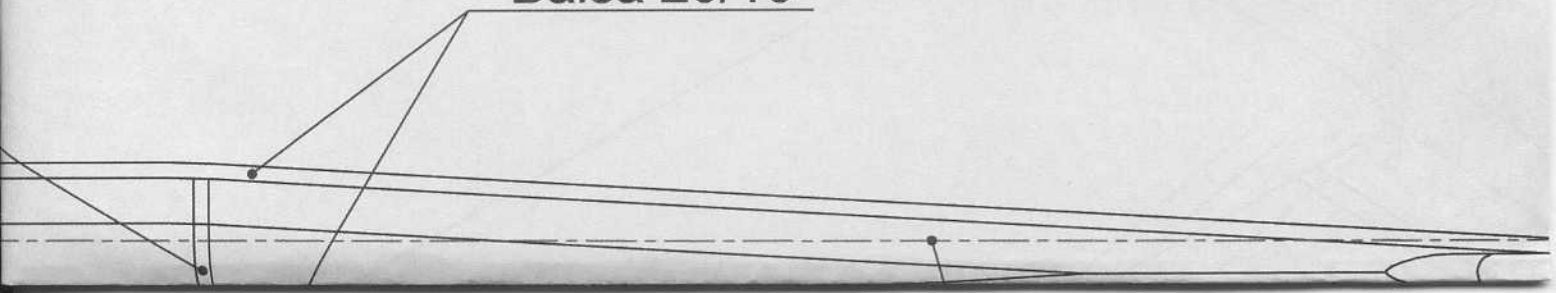
Limite de peinture de la

e coton



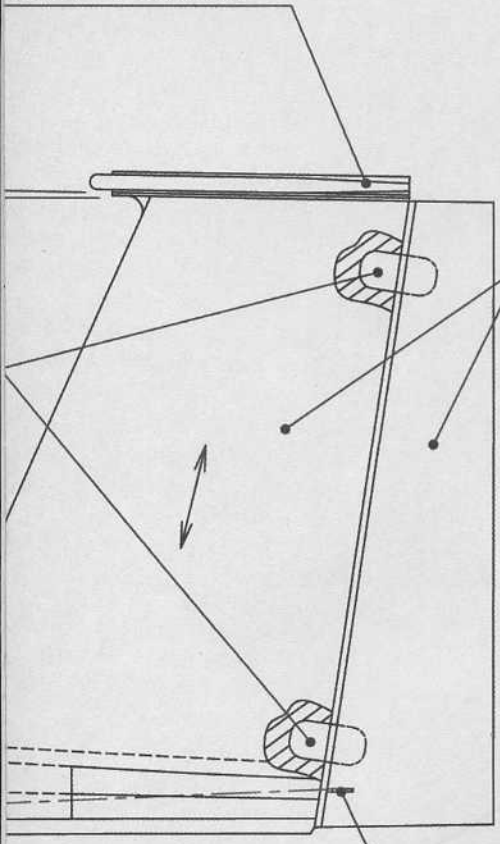
Ligne de découpe de la bu

Balsa 20/10°



3

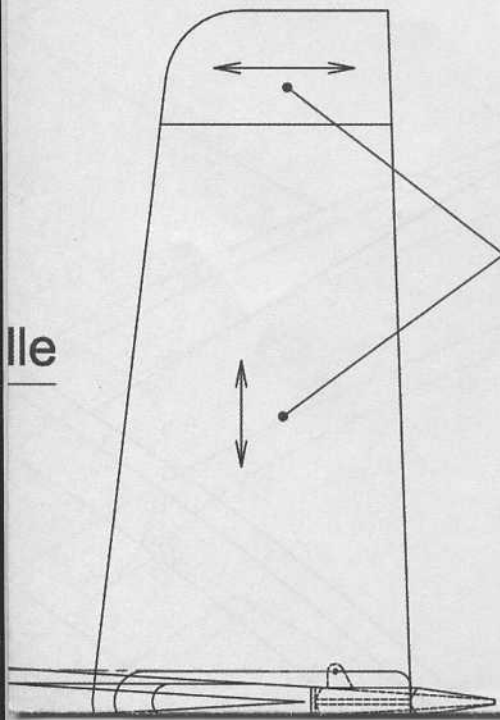
étanchéité des  
sur 15mm



Balsa plume 50/10°

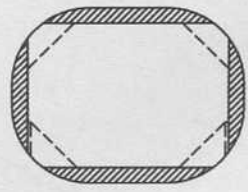
bulle

Guignol CTP 4/10°

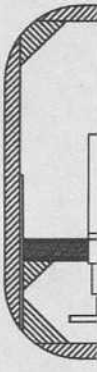


Balsa 20/10° léger

bulle



A - A

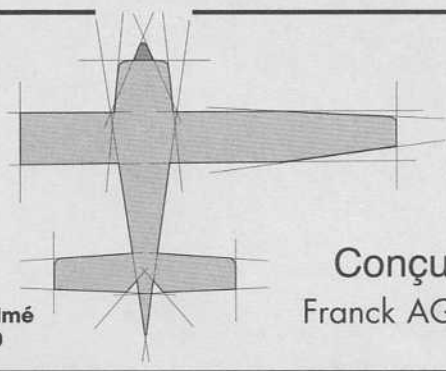


B

4

PLAN **encarté**  
**modèle**  
magazine

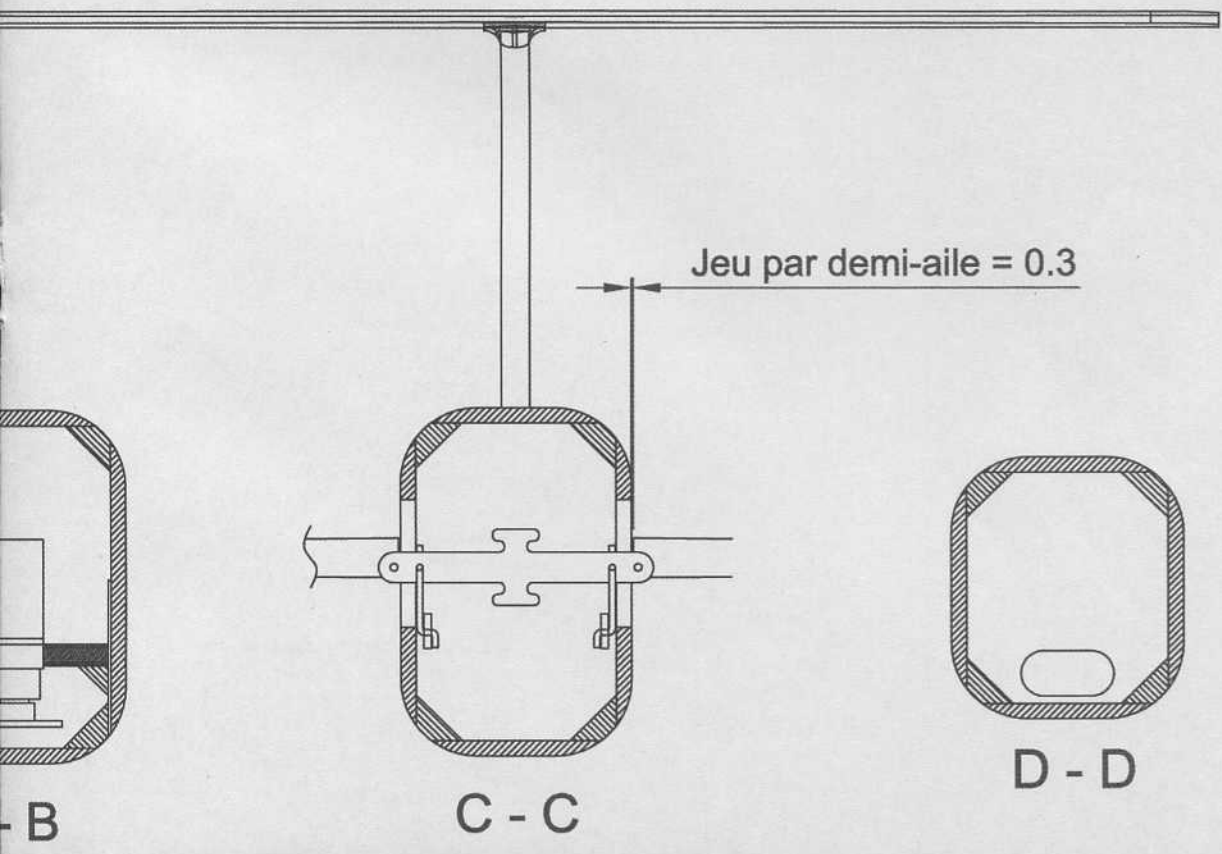
Espace Clichy - Service VPC - 6, rue Olof Palmé  
92587 Clichy cedex - Tél : 01 47 56 54 00



Conçu par  
Franck AGUERRE

# SZD 55-1 NEXUS

REF. 697E



5

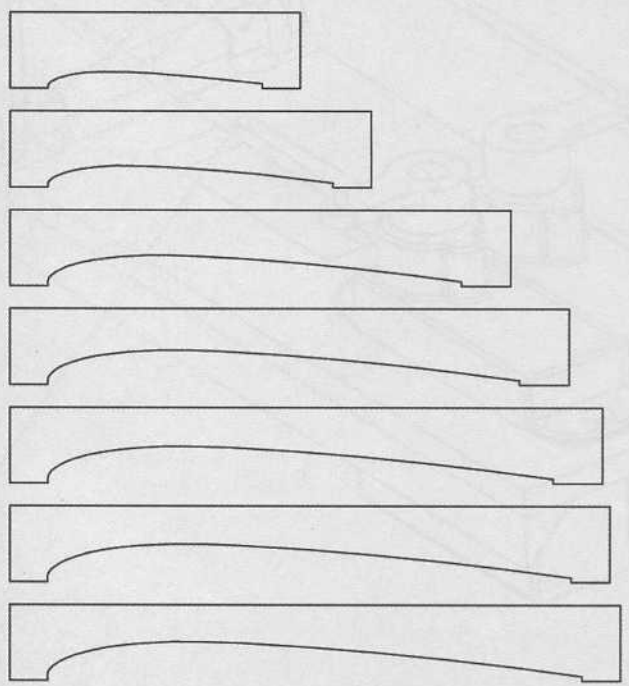
5A

ille

nelles CTP 4/10°

amelles  
ulle

Gabarits de contrôle de ponçage

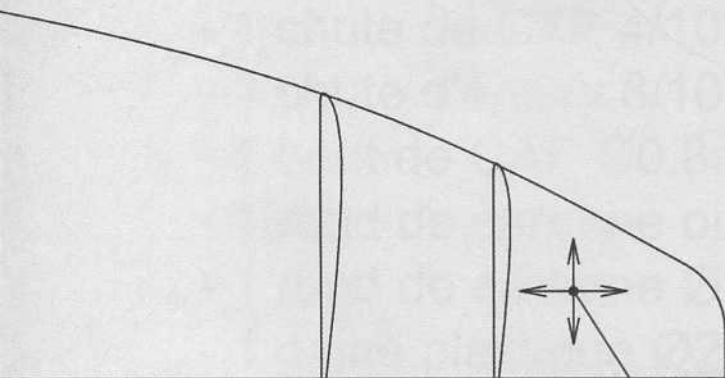
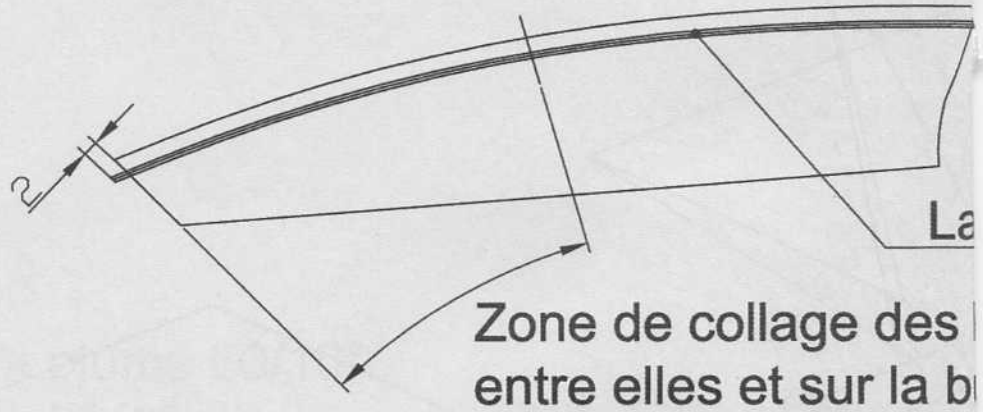


6

Assise de stab + renfort CTP 4/10°

## Systeme de fixation de la bu

duit nitro ou au Klir)



Saumon balsa 20/10°  
doublé à contre-fil

Tube plastique Ø2 x Ø3

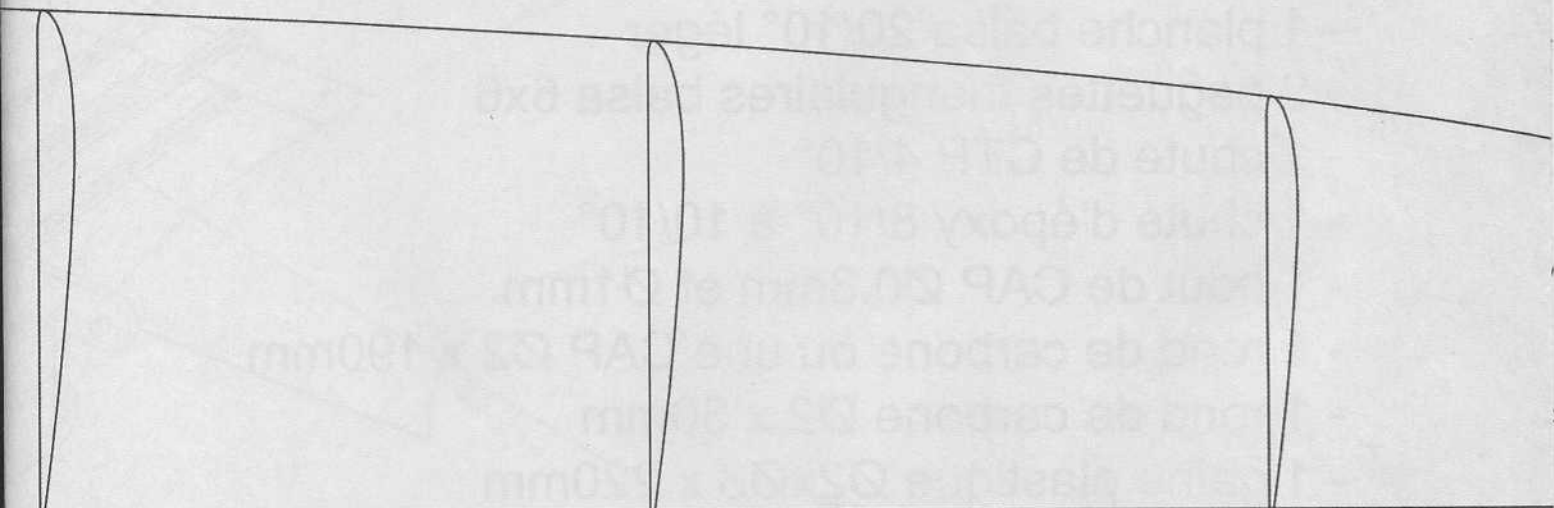
7

Tube plastique Ø2 x Ø3

10° à contre-fil dessus et dessous

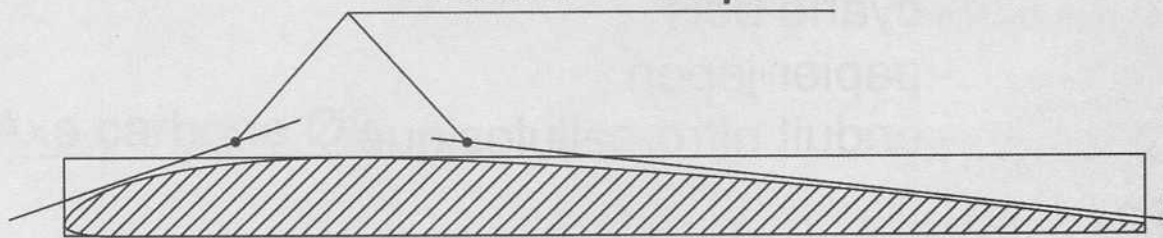
Fil coton  
(plastifié à l'end

Volume 50/10°



Ebauches du profil

Figure CTP 4/10°



3

8

