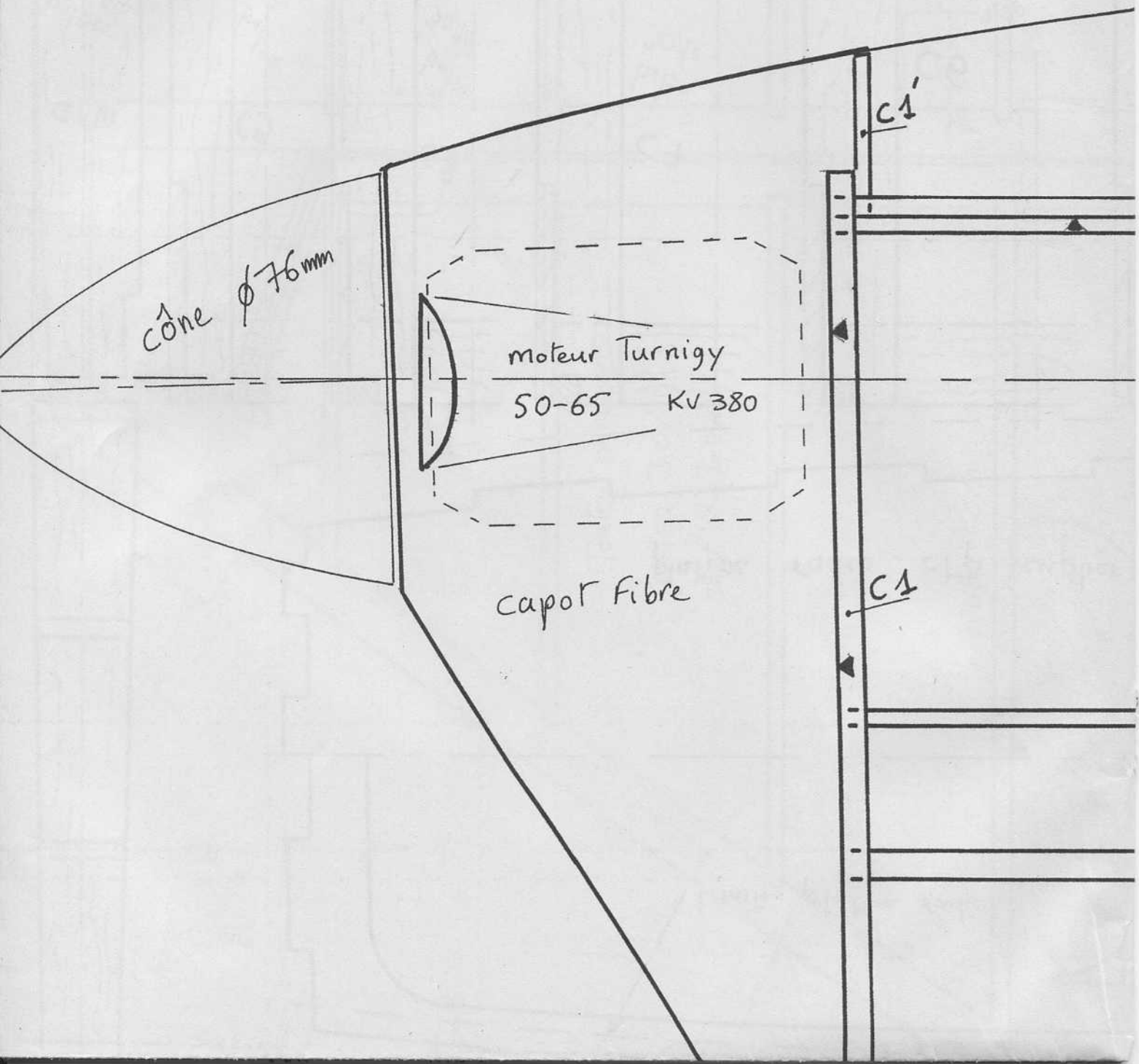


A



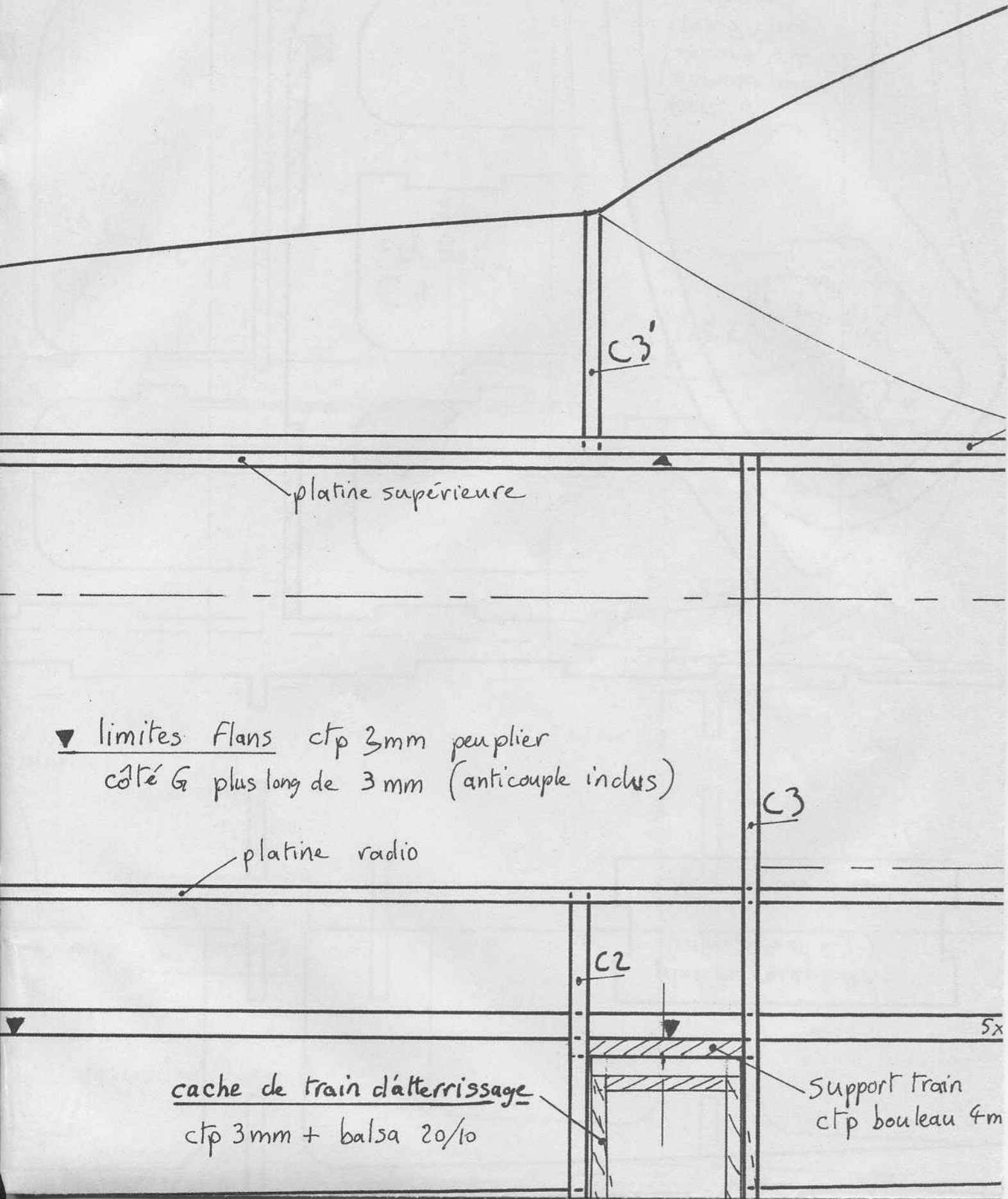
cône  $\phi 76\text{mm}$

moteur Turnigy  
50-65 KV 380

capot fibre

c1'

c1



▼ limites flans ctp 3mm peuplier  
côté G plus long de 3mm (anticouple inclus)

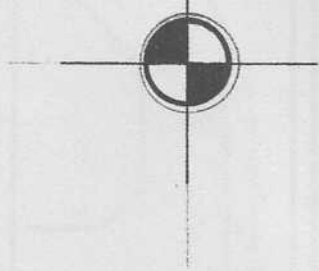
platine radio

cache de train d'atterrissage  
ctp 3mm + balsa 20/10

Support train  
ctp bouleau 4m

5x

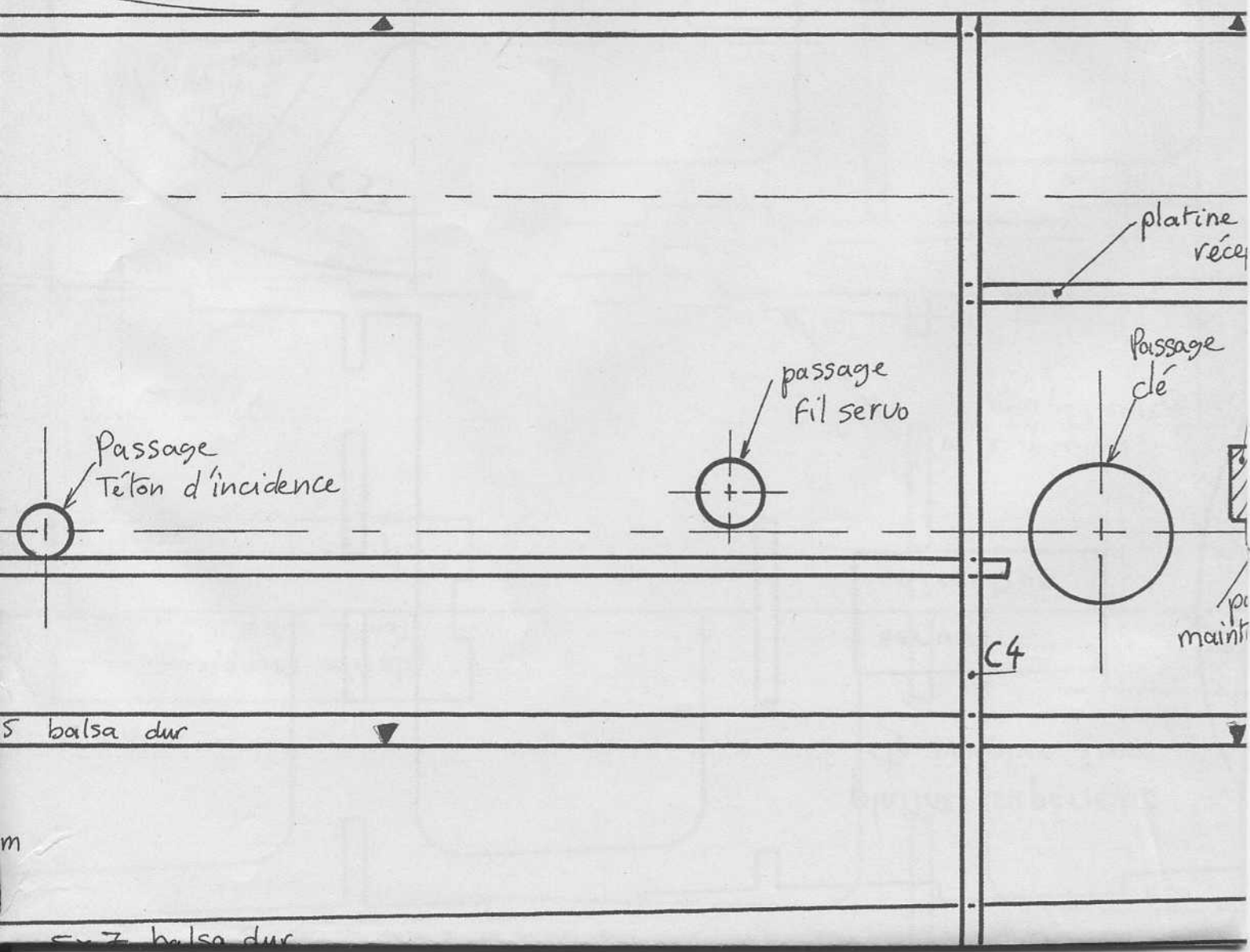
centre de gravité (175mm du bo = 30% corde



verrière fibre



platine support de verrière ctp peuplier 3mm



d'attache moyenne

CA

C5''  
C5'

dos: polystyrène  
coffré balsa 10/10

servo dérive

5x5 balsa dur  
30/10

teur

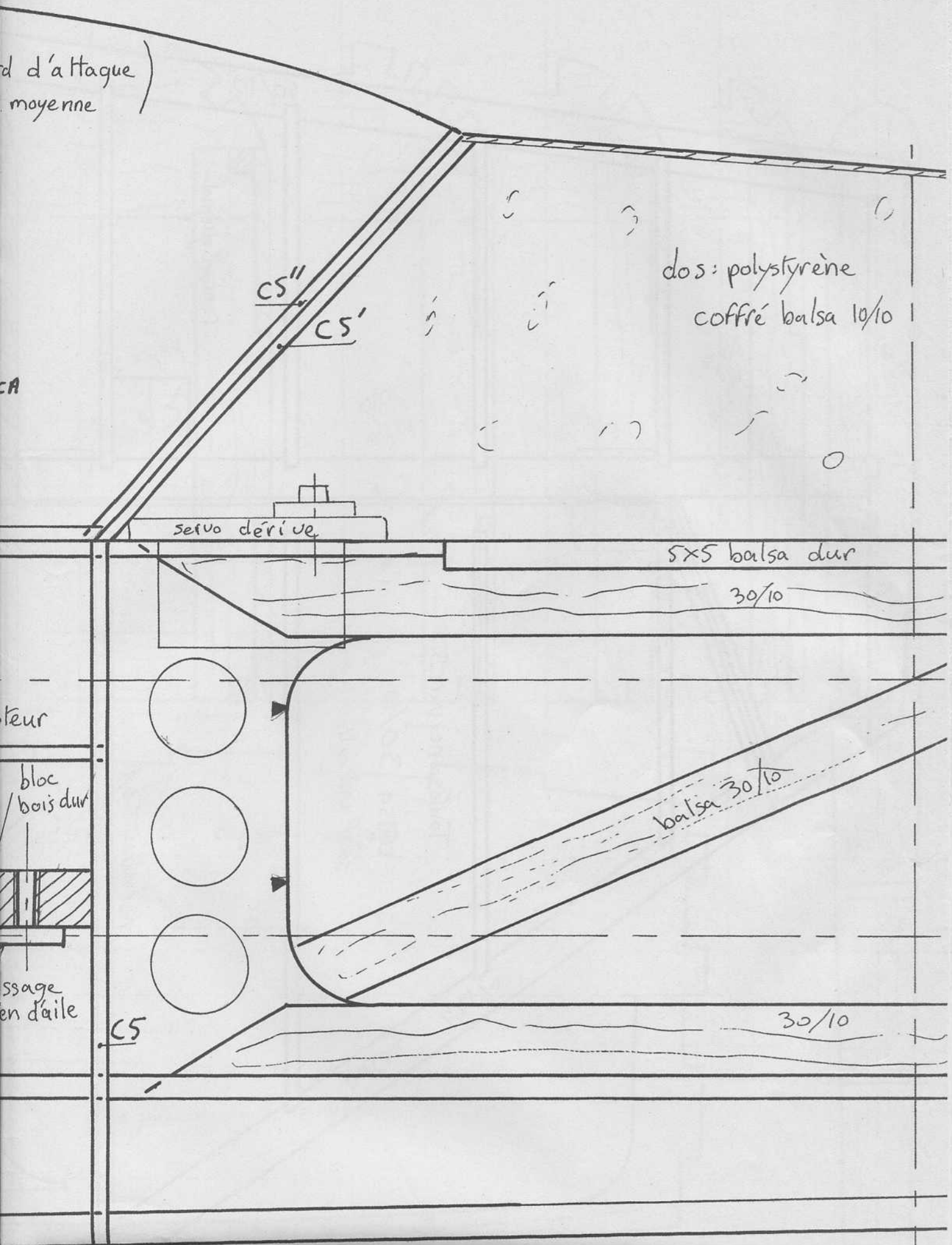
bloc  
bois dur

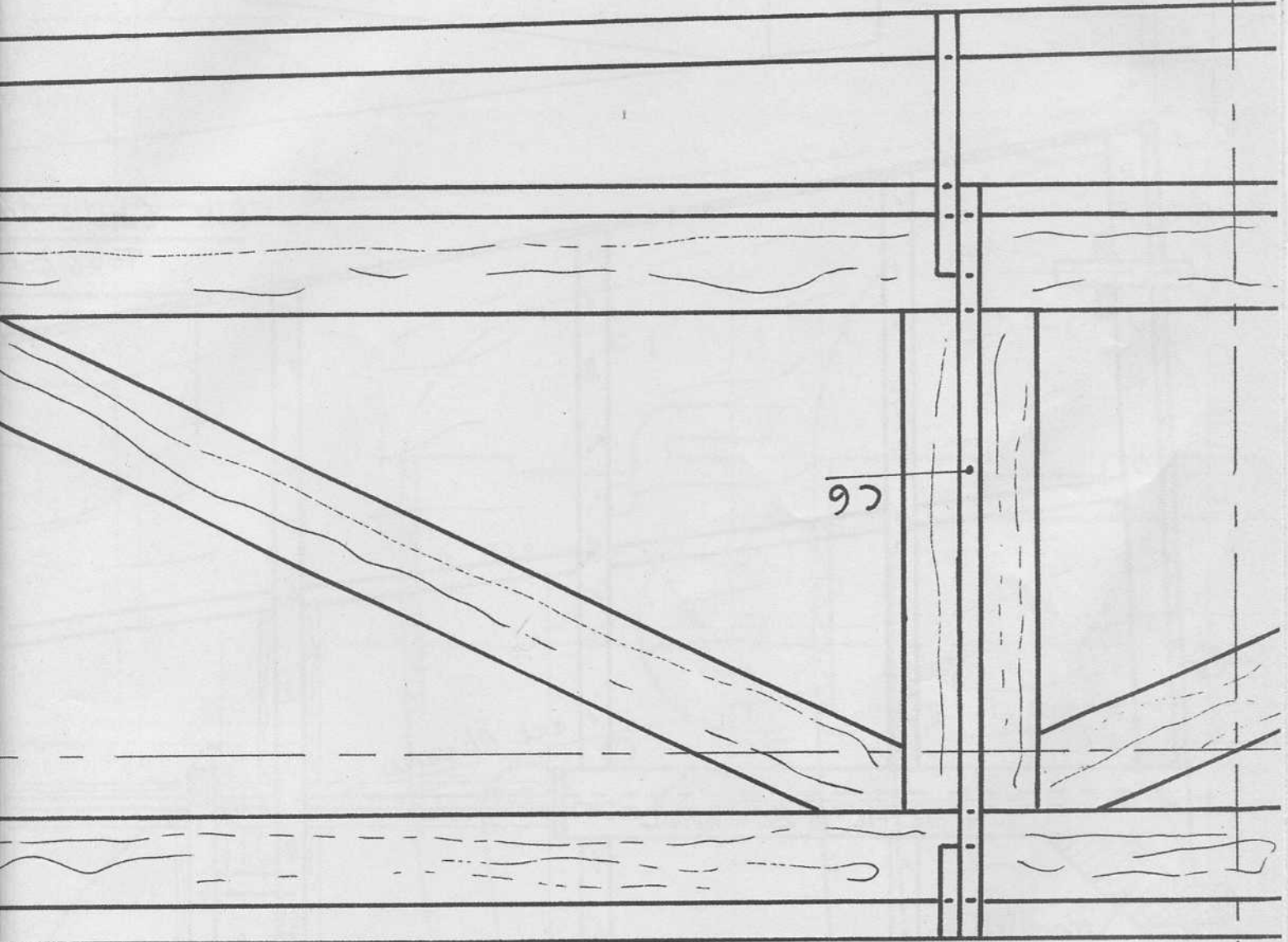
balsa 30/10

ssage  
en d'aile

C5

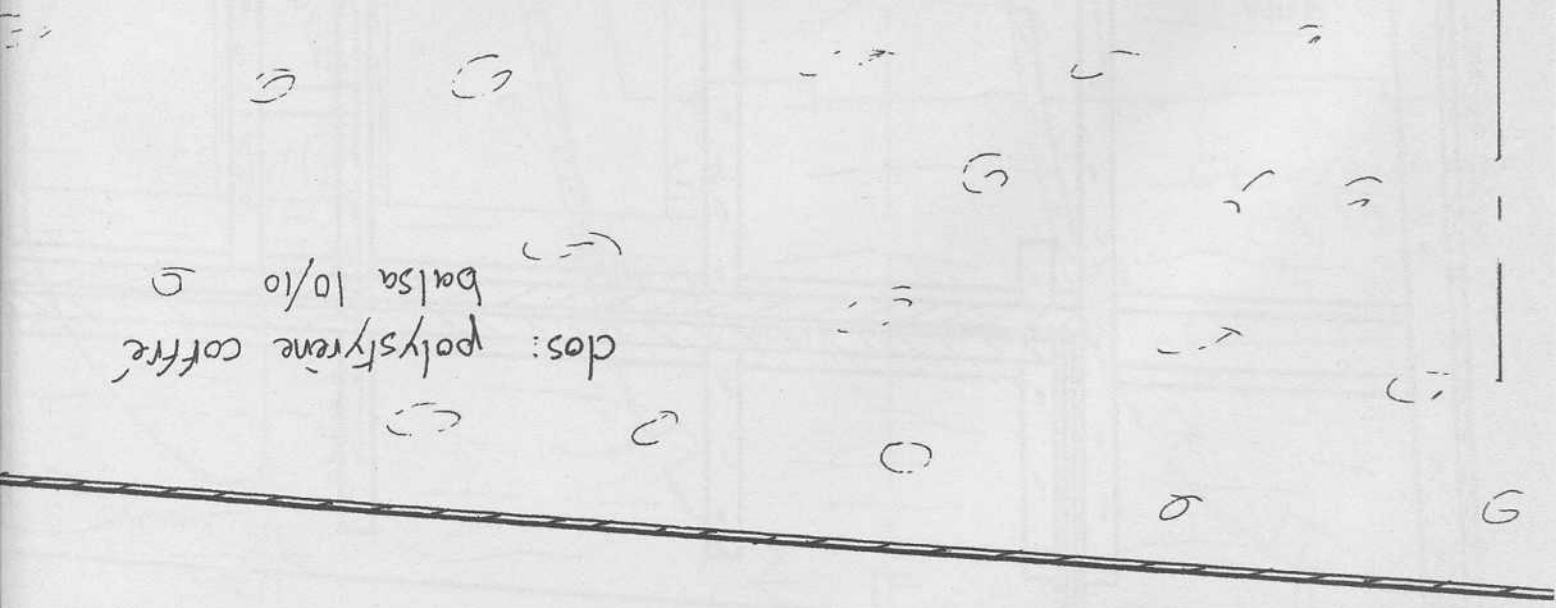
30/10





97

dos: polystyrene cofre  
balsa 10/10



Ne figure pas sur le plan, les baguettes intermédiaires !

SXT balsa dur

balsa 30/10

balsa 30/10

balsa 30/10

t)

t)

t)

t)

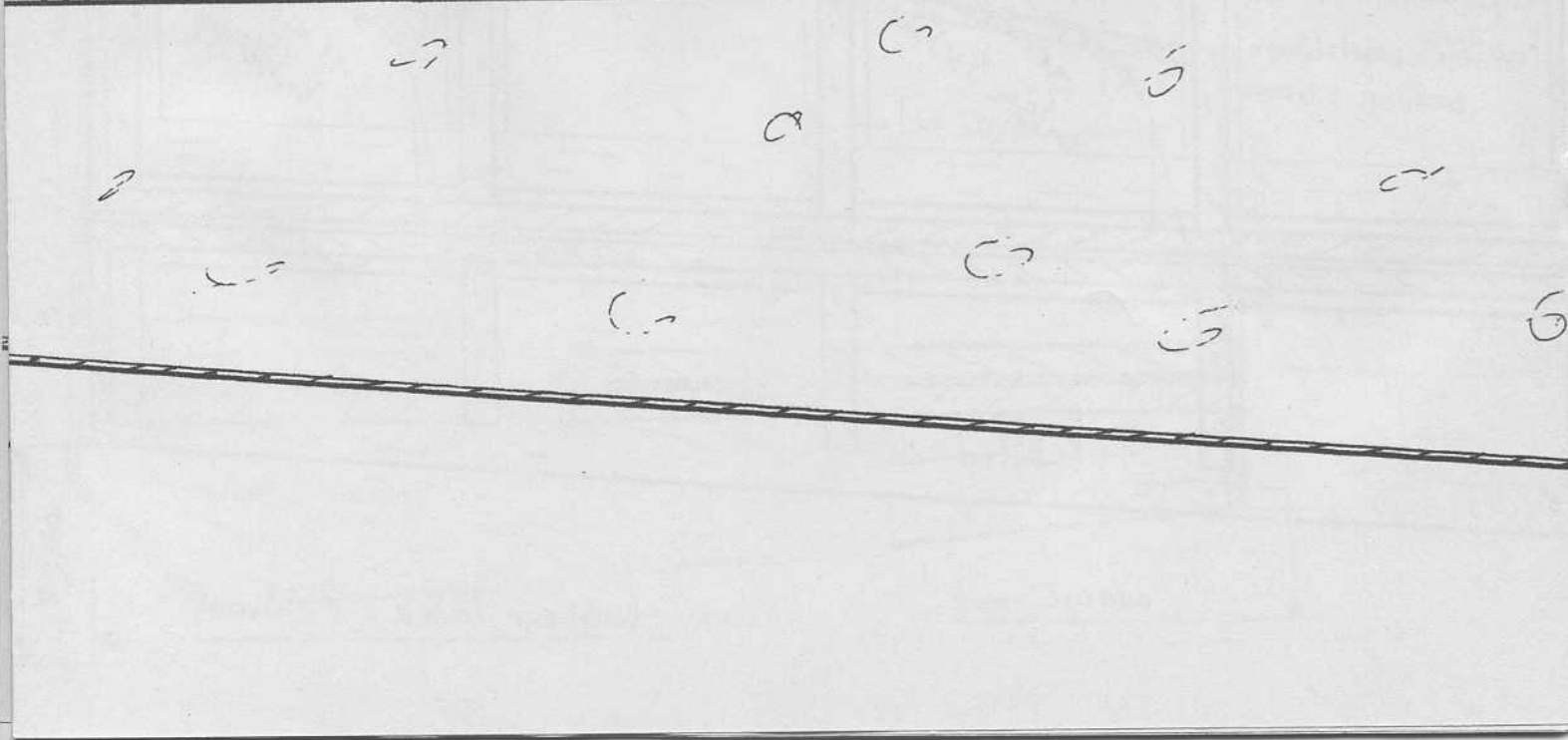
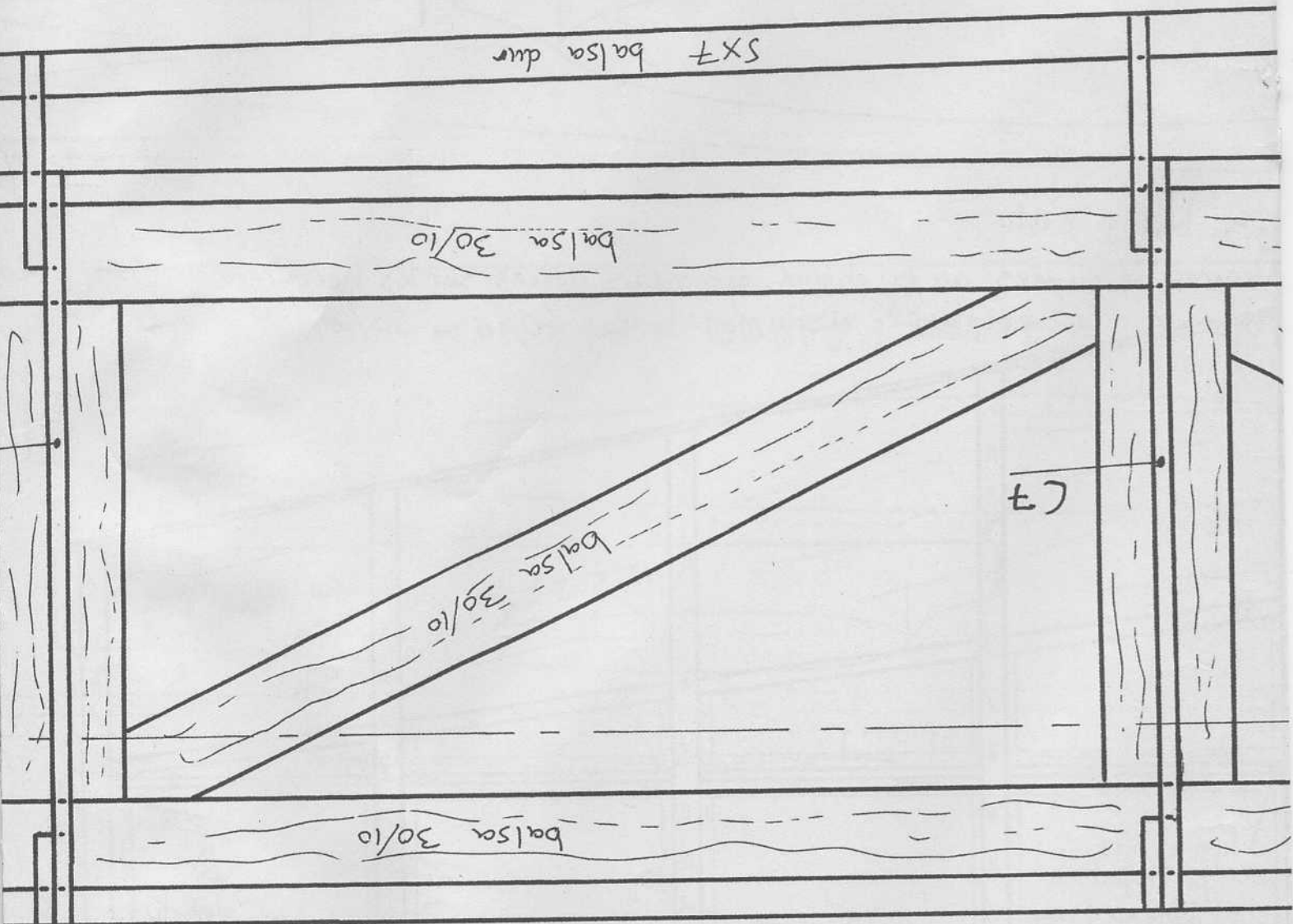
t)

t)

t)

t)

t)



7

5x5 balsa dur

8

5x5 balsa dur

C9

renfort  
vis serré

gabarrit ole  
decoupe du  
dos de fuselage

